

50ppb Formaldehyde

Column: DB-5ms

60 m x 0.32 mm I.D., 1.0 µm

P/N: 123-5563

Carrier: Helium, 1.5 mL/min

Oven: 35°C for 5 min

35-85°C at 10°C/min

Injector: Entech 7100 cryogenic

sample preconcentrator

Sample: 100 cc 50 ppb Formaldehyde/20 ppb others

Detector: GC/MS 6890/5973 N

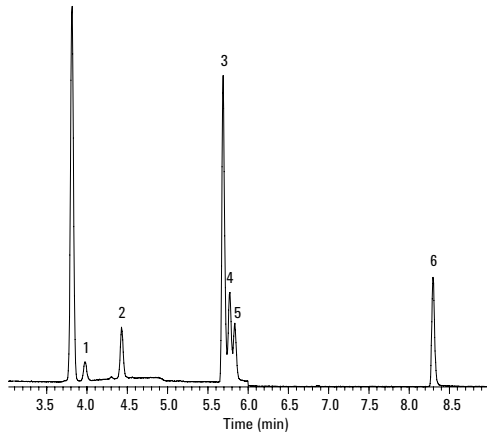
Scan 29-180 amu 0-6 min

33-280 amu 6-10 min

Electron Impact 70 eV

1. Formaldehyde
2. Acetaldehyde
3. Acetone-d6
4. Acetone
5. Propanol
6. 2-Butanone

*Agilent wishes to thank Entech Instruments
for providing this chromatogram.*



C1078