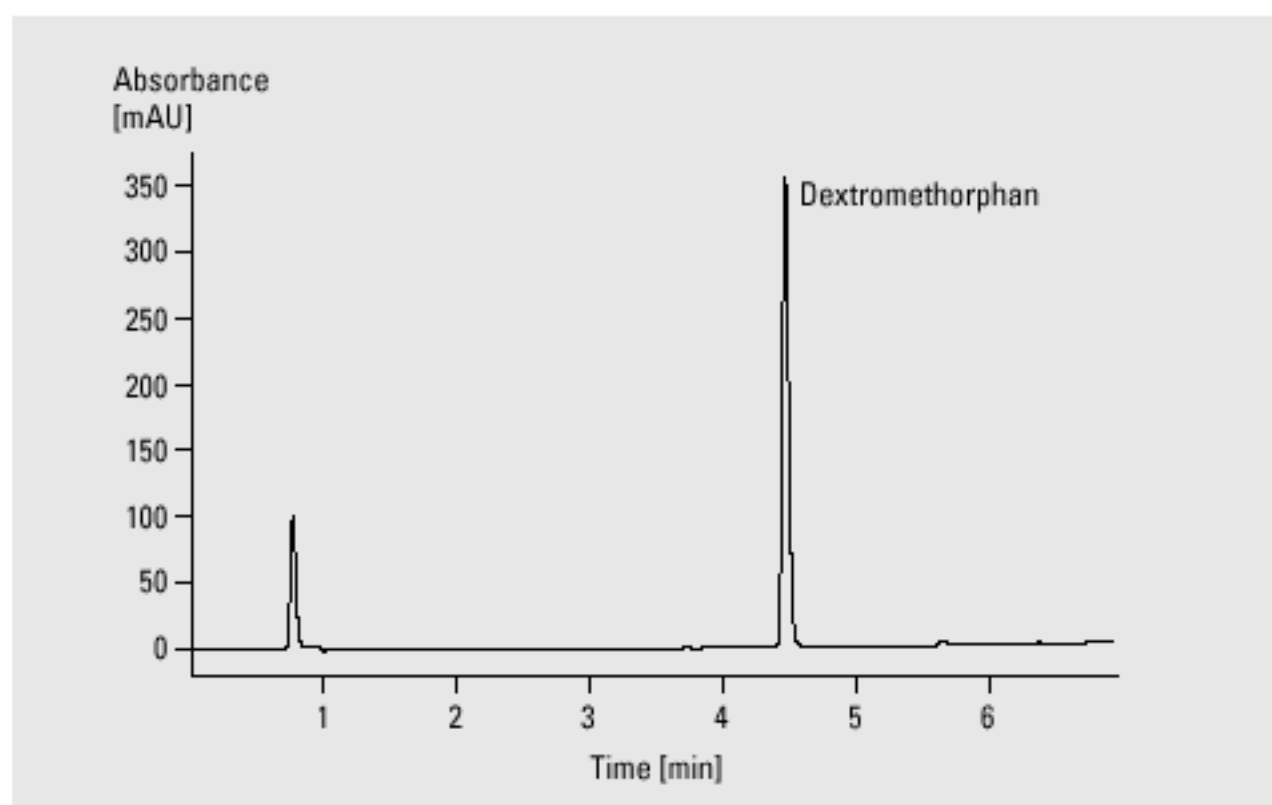
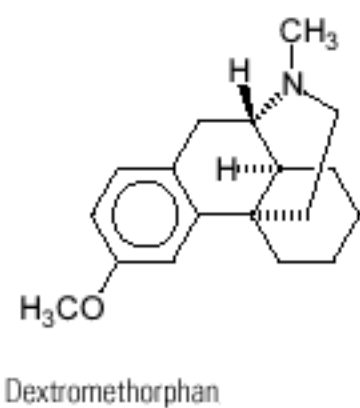
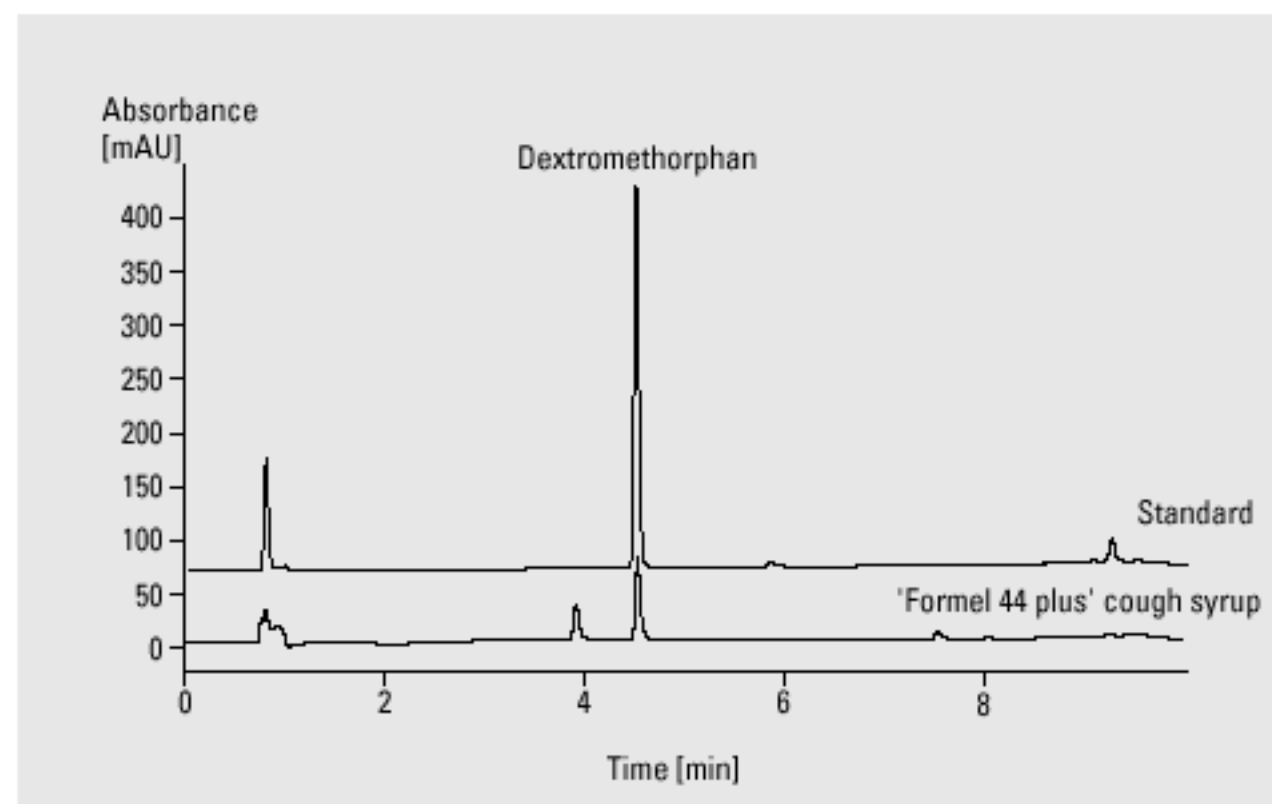


# Antitussive Drugs



## Analysis of antitussive drugs

<b>Column</b>	4.6 x 75 mm Zorbax SB-C18 , 3.5 $\mu$ m
<b>Mobile phase</b>	A = 0.025 M $\text{KH}_2\text{PO}_4$ in water , (pH = 3), B = acetonitrile
<b>Flow rate</b>	1.0 ml/min
<b>Gradient</b>	at 0 min 10 % B at 8 min 80 % B
<b>Column wash</b>	at 10 min 10 % B
<b>UV detector</b>	variable wavelength detector 204 nm, standard cell
<b>Column compartment temperature</b>	60 $^\circ\text{C}$
<b>Stop time</b>	10 min
<b>Post time</b>	5 min
<b>Injection volume</b>	5 $\mu$ l



## Dextromethorphan in 'Formel 44 plus' cough sirup