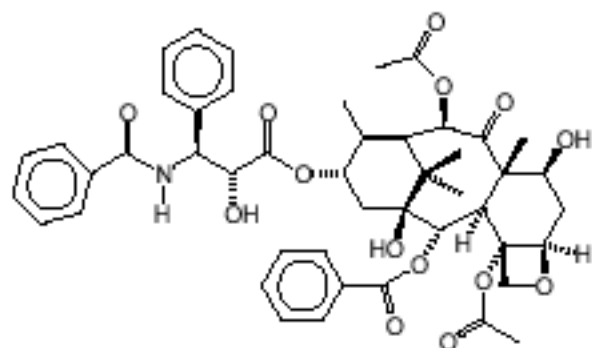
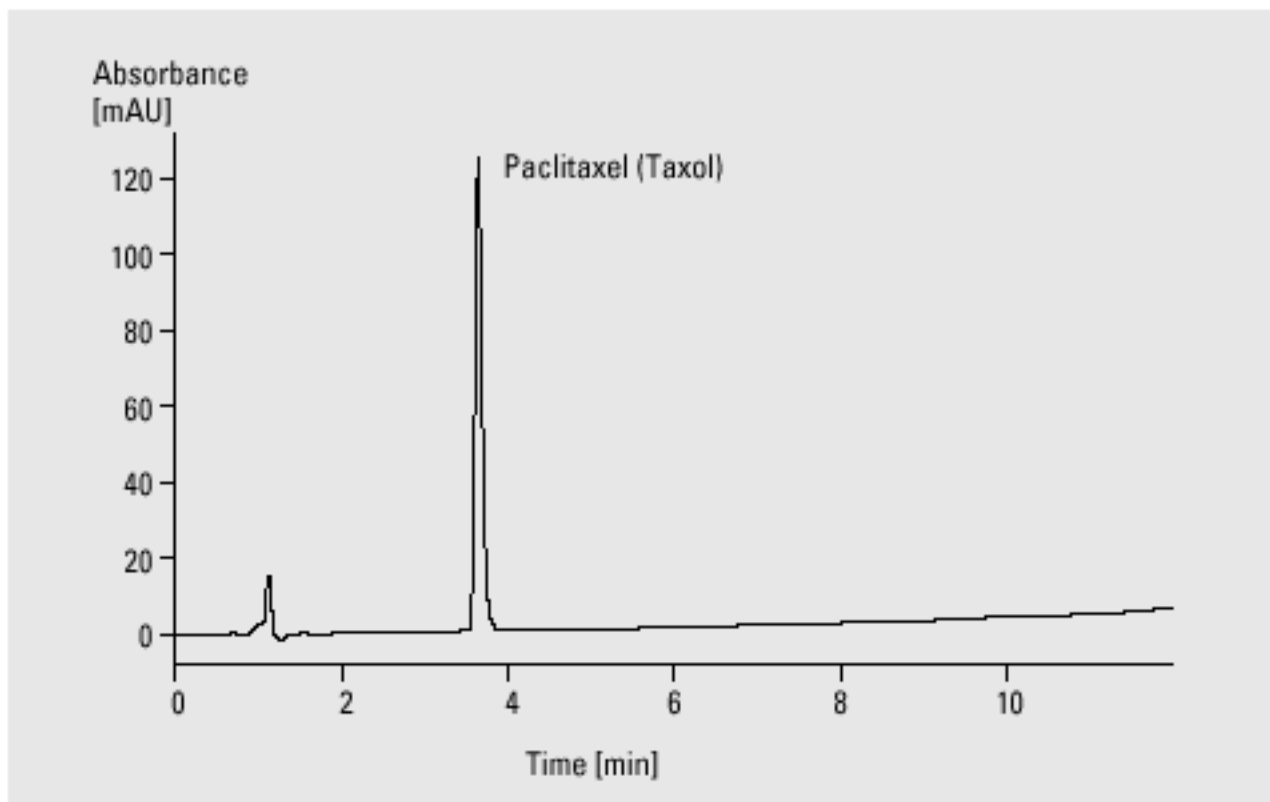


Antitumor Drugs



Paclitaxel (Taxol)



Analysis of antitumor drugs

Column	4 x 125 mm Hypersil ODS, 5 μ m
Mobile phase	A = water, B = acetonitrile
Flow rate	1.0 ml/min
Gradient	at 0 min 50 % B at 10 min 90 % B
Column wash	at 12 min 50 % B
UV detector	variable wavelength detector 204 nm, standard cell
Column compartment temperature	25 $^{\circ}$ C
Stop time	12 min
Post time	5 min
Injection volume	5 μ l