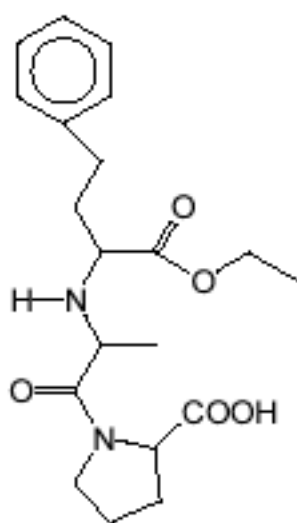
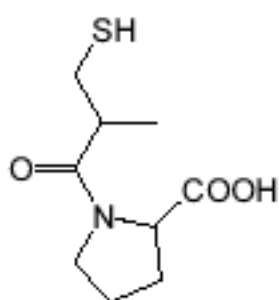


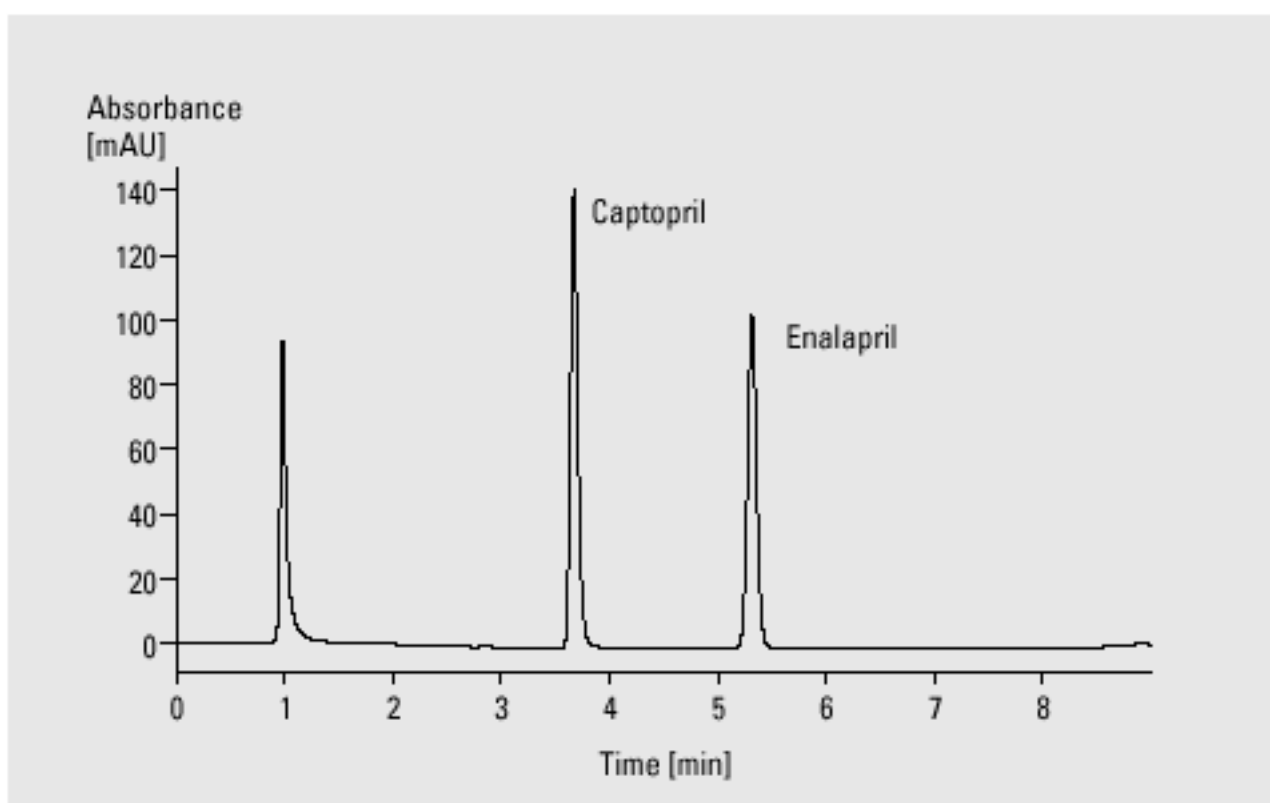
Antihypertensive Drugs



Enalapril

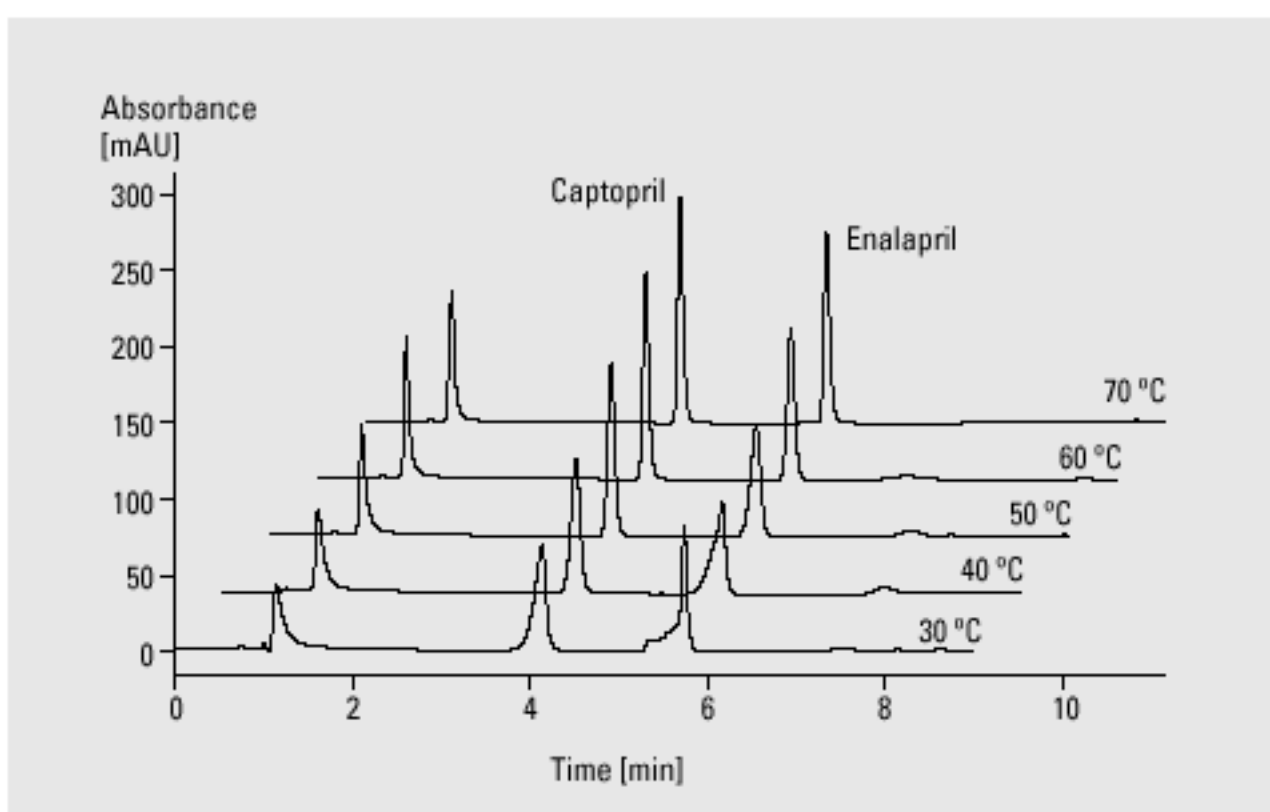


Captopril



Analysis of antihypertensive drugs

Column	4.6 x 75 mm Zorbax SB-C18, 3.5 μ m
Mobile phase	A = 0.025 M KH_2PO_4 in water (pH = 2), B = acetonitrile
Flow rate	1.0 ml/min
Gradient	at 0 min 10 % B at 8 min 55 % B
Column wash	at 9 min 10 % B
UV detector	variable wavelength detector, 204 nm, standard cell
Column compartment temperature	60 $^\circ\text{C}$
Stop time	9 min
Post time	5 min
Injection volume	5 μ l



Increasing temperature leads to improved peak shape