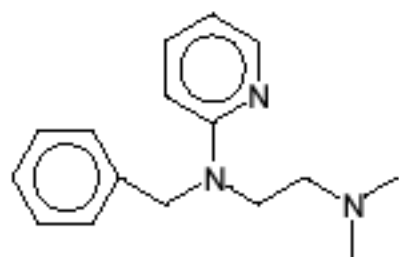
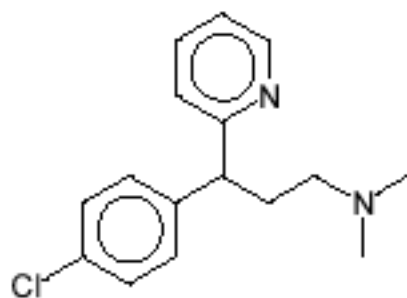


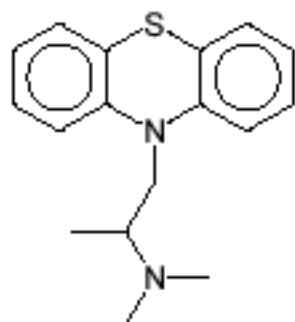
Antihistaminic Drugs



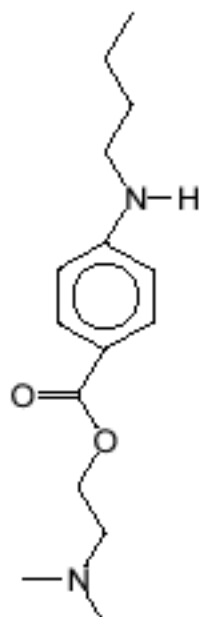
Tripelenamine



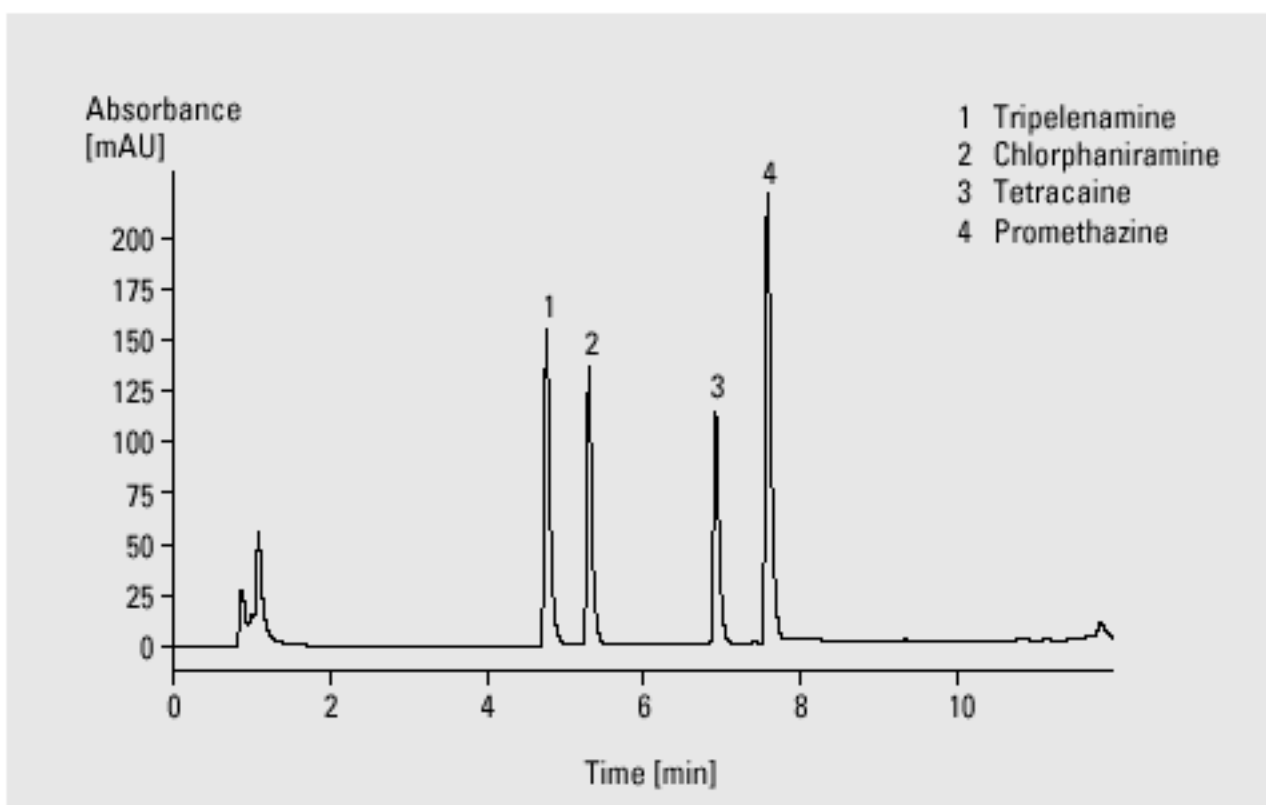
Chlorpheniramine



Promethazine



Tetracaine



Analysis of antihistaminic drugs

Column	4.6 x 75 mm Zorbax SB-C18, 3.5 μ m
Mobile phase	A = 0.025 M KH_2PO_4 in water (pH = 3), B = acetonitrile
Flow rate	1.0 ml/min
Gradient	at 0 min 10 % B at 10 min 55 % B
Column wash	at 12 min 10 % B
UV detector	variable wavelength detector 204 nm, standard cell
Column compartment temperature	25 $^\circ\text{C}$
Stop time	12 min
Post time	5 min
Injection volume	5 μ l