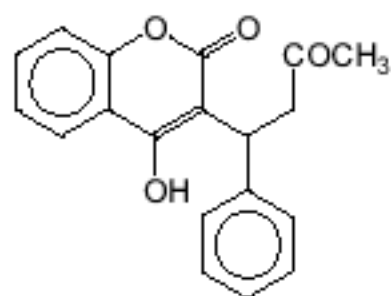
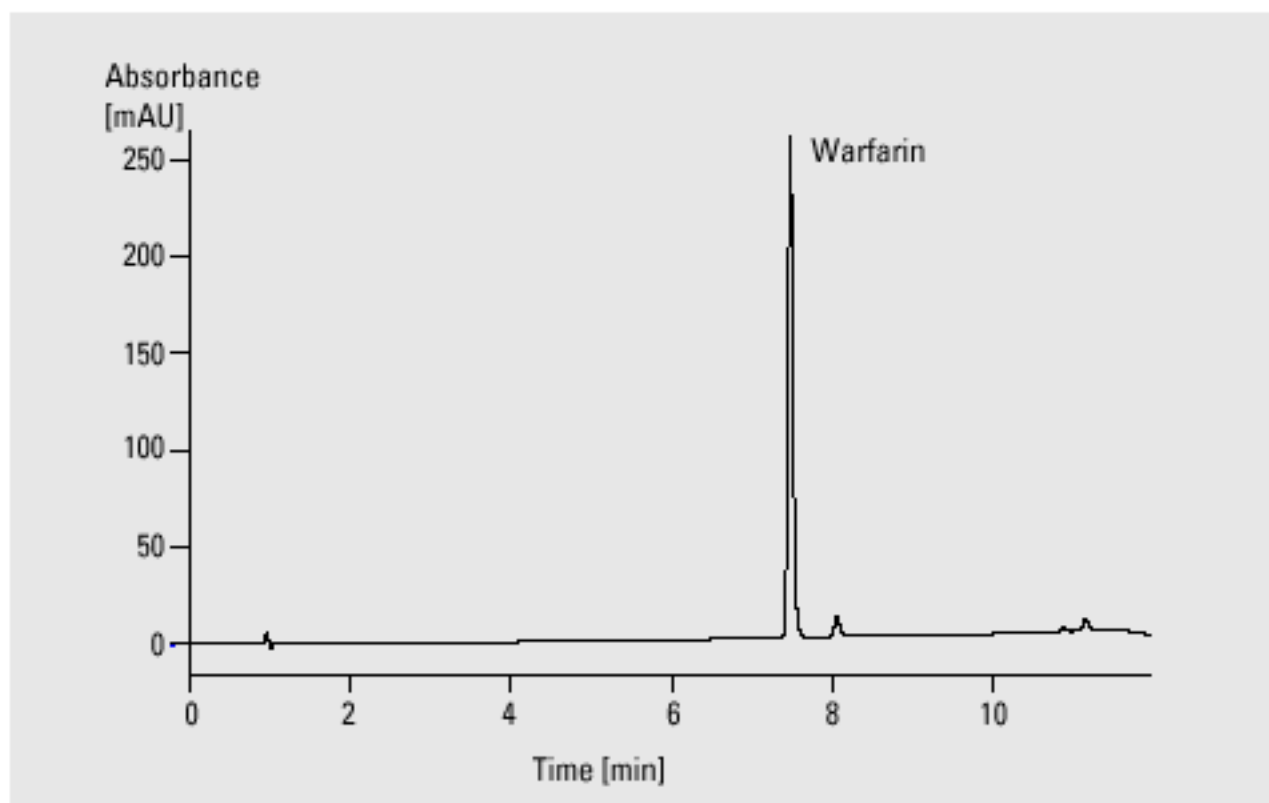


Anticoagulant Drugs



Warfarin



Analysis of warfarin using the variable wavelength detector

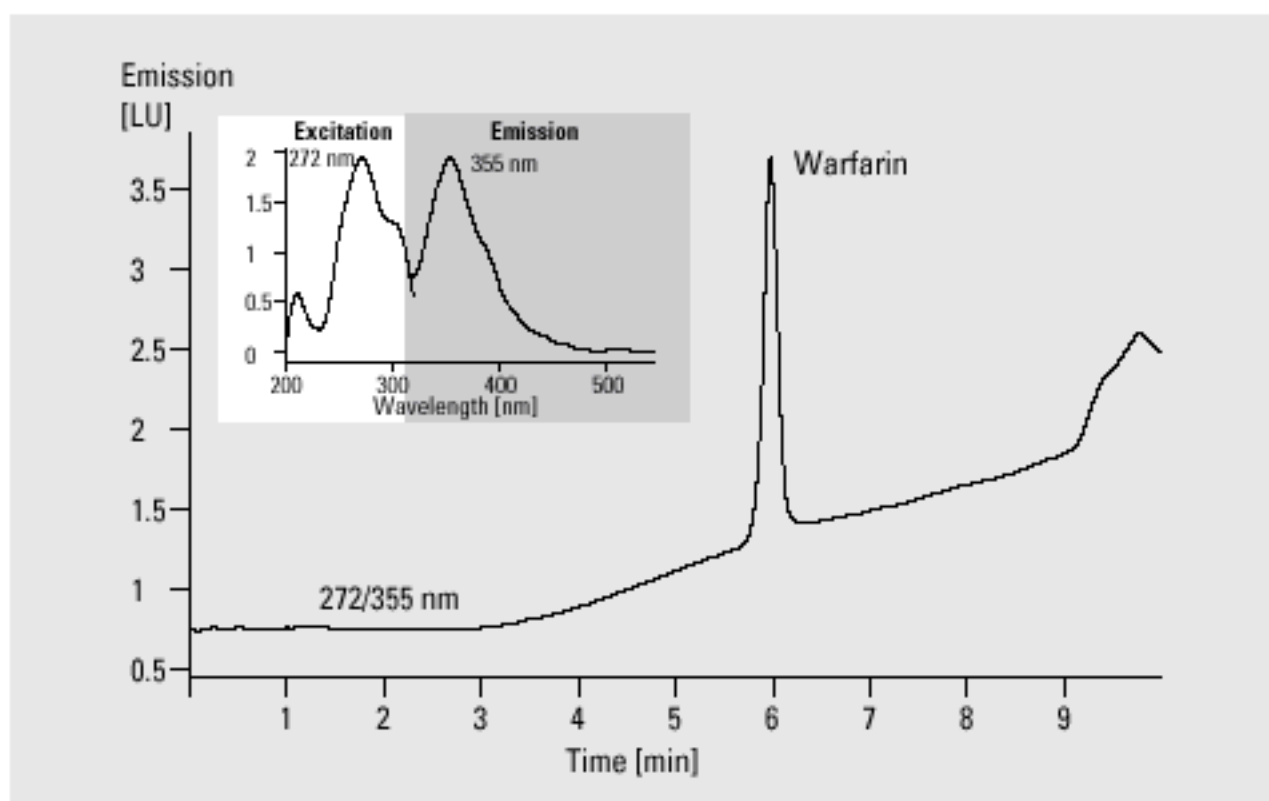
HPLC method performance

Limit of detection 0.1 mg/l (5- μ l injection), S/N=2 (VWD)

Precision of RT
10 runs, 100 mg/l 0.02 %

Precision of area
10 runs, 100 mg/l 0.46 %

Column	4.6 x 75 mm Zorbax SB-C18, 3.5 μ m
Mobile phase	A = 0.025 M KH_2PO_4 in water (pH = 3), B = acetonitrile
Flow rate	1.0 ml/min
Gradient	at 0 min 20 % B at 10 min 80 % B
Column wash	at 12 min 20 % B
UV detector	variable wavelength detector, 204 nm, standard cell fluorescence detector, 272/355 nm, standard cell
Column compartment temperature	25 $^\circ\text{C}$
Stop time	12 min
Post time	5 min
Injection volume	5 μ l



Analysis of warfarin using the HP 1100 Series fluorescence detector (column: 2.1 mm Zorbax SB-C18, 5 μ m)