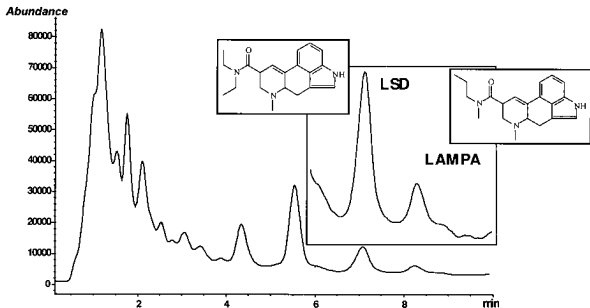


# Urine, LSD Analysis by LC/MS



Instrument: Agilent 1100 LC/MSD System  
Column: ZORBAX Eclipse XDB -C8, 2.1 x 50 mm, 5  $\mu$ m (P/N: 960967-906)  
Mobile Phase: 15 : 85, ACN : 10 mM Ammonium Formate, pH 3.7  
Flow: 0.3 mL/min  
Inj vol: 30  $\mu$ L  
Temperature: 30°C  
Detection: MS  
Lab Insight: PH35

Agilent 1100 MSD Conditions: SIM mode, Ions: 324.2, 223.1, 208.1  
Fragmentor (dynamically ramped) 100V at 324.2, 148V at 223.1, 170V at 208.1

Hughes, J.M., C.A. Miller and S.M. Fischer, "Development of a Method for the Forensic Analysis of LSD in Urine", presented at the ASMS, Palm Springs, June 1997.