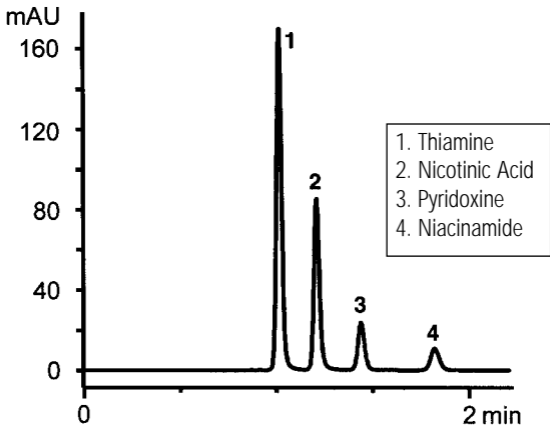


Water Soluble Vitamins Separated on ZORBAX SB-Aq



Column: ZORBAX SB-Aq, 4.6 x 150 mm, 5 μ m
(P/N: 883975-914)

Mobile Phase: 5% MeOH/95% TFA (0.1%)

Flow Rate: 2.0 mL/min

Temperature: 35°C

Detector: UV (254 nm)