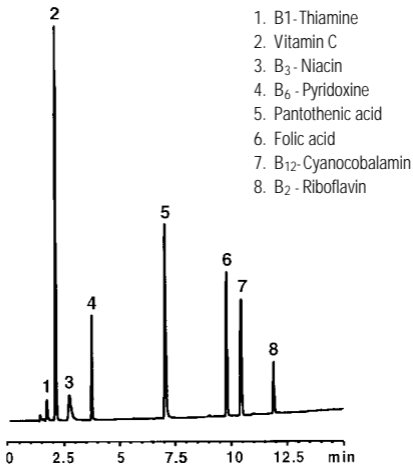


Water-Soluble Vitamins



Sample: Water soluble vitamins
Column: ZORBAX SB-C8, 4.6 x 150 mm, 5 μ m, (P/N: 883975-906)
Mobile phase: A = 50 mM Sodium Phosphate, pH 2.5/MeOH (90/10)
B = 50 mM Sodium Phosphate, pH 2.5/MeOH (10/90)
Gradient: 0-70% B in 18 min.
Flow rate: 1.0 mL/min
Temperature: Ambient
Detection: UV 245 nm