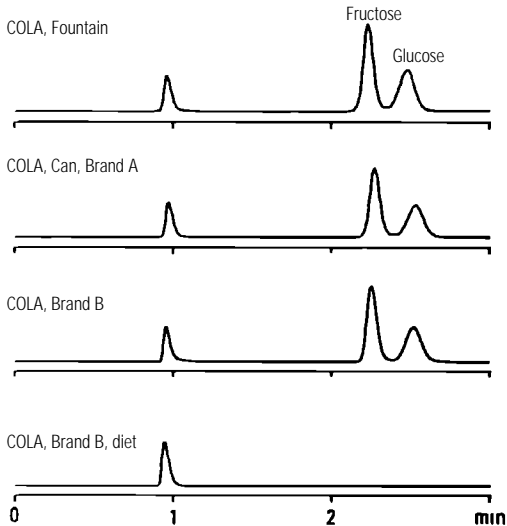


Carbohydrates in Colas



Instrument: Agilent 1100 RID
Column: ZORBAX Carbohydrate Analysis Column, 4.6 x 150 mm (P/N: 843300-908)
Mobile Phase: 75% ACN 25% H₂O
Temperature: 30°C
Flow Rate: 2.0 mL/min
Sample: No dilution