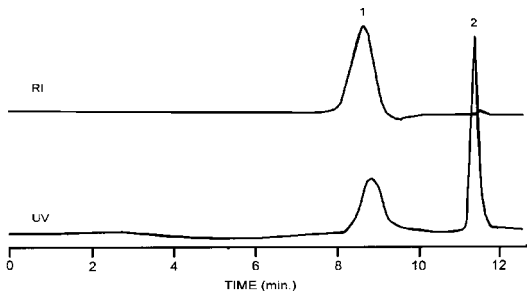


Polysaccharide—Size Separation



Sample: 1. MW = 40,000 polysaccharide (Rheomacrodex),

2. Glucose

Column: ZORBAX Bimodal Kit, Unsilanized, 2 columns,

6.2 x 250 mm, 5 μ m, (P/N: 880949-903)

Mobile phase: 8.5 g NaCl per liter water

Flow rate: 2.0 mL/min

Temperature: 35°C

Detection: UV 205 nm and RI