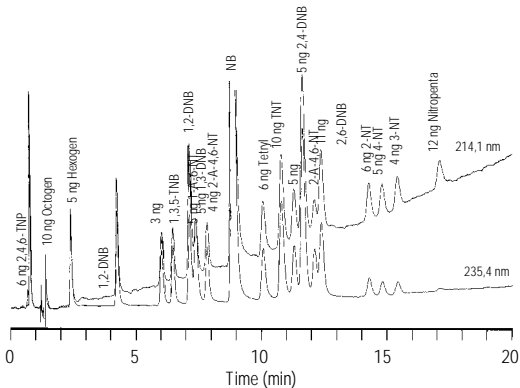


Explosives



Sample:	Explosive Compounds
Column:	Hypersil BDS-C18, 4 x 100 mm, 3 μ m, (P/N: 799260B-354)
Mobile phase:	A = Water, B = Methanol (MeOH)
Gradient:	at 0.0 min 26% B at 10 min 40% B at 20 min 55% B at 30 min 70% B at 31 min 26% B
Flow rate:	0.72 mL/min
Temperature:	38°C
Detection:	214 nm and 235 nm