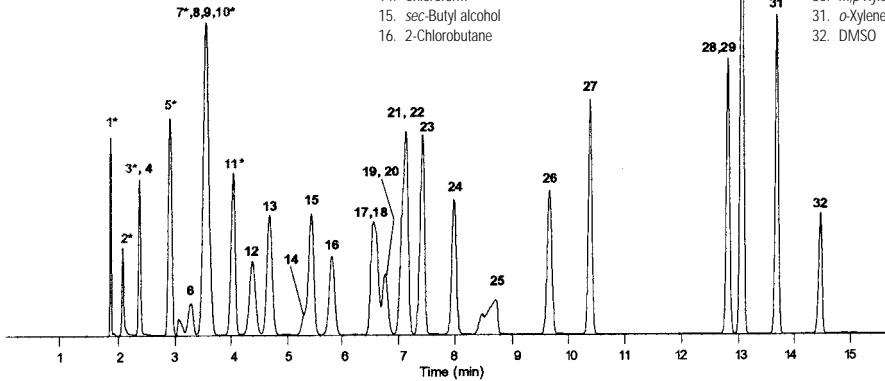


Blood Pollutants

Column: **DB-ALC1**
30 m x 0.53 mm id, x 3.0 µm
P/N: 125-9134
Carrier: Helium, 36 cm/sec, measured at 40°C
Oven: 40°C for 5 min
40-210°C at 10°/min
Injector: 250°C, Split 1:10
Detector: FID, 300°C

1. Methanol*
2. Acetaldehyde*
3. Ethanol*
4. Diethyl ether
5. Isopropyl alcohol*
6. Methylene Chloride
7. Acetone*
8. Acetonitrile
9. Ethyl formate
10. *t*-Butyl alcohol*
11. 1-Propanol
12. MTBE
13. Hexane
14. Chloroform
15. *sec*-Butyl alcohol
16. 2-Chlorobutane

17. MEK (2-Butanone)
18. Ethyl acetate
19. 1,1-Trichloroethane
20. Carbon tetrachloride
21. 1-Chlorobutane
22. Benzene
23. 1-Butanol
24. Heptane
25. Ethylene glycol
26. soamyl alcohol
27. Toluene
28. Isopropyl amine (not shown)
29. Ethylbenzene
30. *m,p*-Xylene
31. *o*-Xylene
32. DMSO



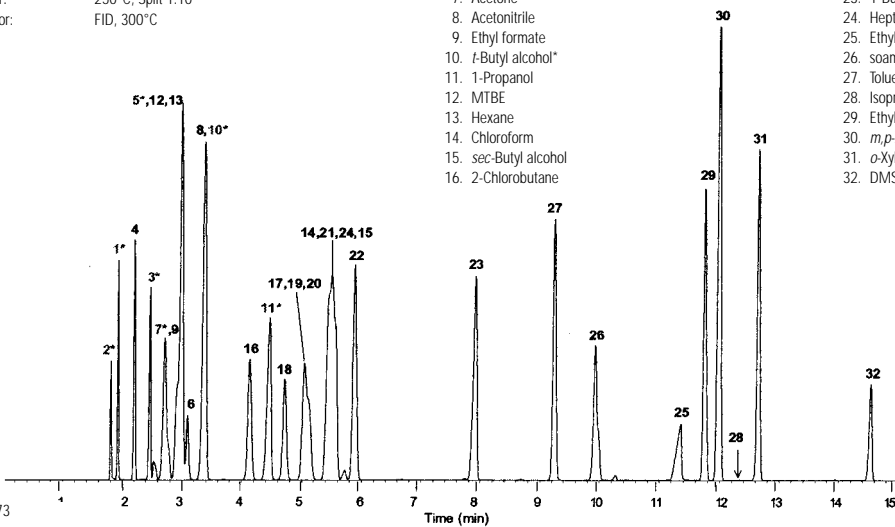
C1072

Blood Pollutants

Column: **DB-ALC2**
30 m x 0.53 mm id, x 2.0 µm
P/N: 125-9234
Carrier: Helium, 36 cm/sec, measured at 40°C
Oven: 40°C for 5 min
40-210°C at 10°/min
Injector: 250°C, Split 1:10
Detector: FID, 300°C

1. Methanol*
2. Acetaldehyde*
3. Ethanol*
4. Diethyl ether
5. Isopropyl alcohol*
6. Methylene Chloride
7. Acetone*
8. Acetonitrile
9. Ethyl formate
10. *t*-Butyl alcohol*
11. 1-Propanol
12. MTBE
13. Hexane
14. Chloroform
15. *sec*-Butyl alcohol
16. 2-Chlorobutane

17. MEK (2-Butanone)
18. Ethyl acetate
19. 1,1-Trichloroethane
20. Carbon tetrachloride
21. 1-Chlorobutane
22. Benzene
23. 1-Butanol
24. Heptane
25. Ethylene glycol
26. soamyl alcohol
27. Toluene
28. Isopropyl amine (not shown)
29. Ethylbenzene
30. *m,p*-Xylene
31. *o*-Xylene
32. DMSO



C1073