

# EPA 552.2

Column: DB-35ms

30m x 0.32 mm id, 0.25 µm film thickness

P/N: 123-3832

DB-XLB

30 m x 0.32 mm id, 0.50 µm film thickness

P/N: 123-1236

Carrier: Helium at 45 cm/sec (EPC in constant flow mode)

Oven: 40°C for 0.5 min

40-200°C at 15°C/min

200°C for 2 min

Injector: Splitless, 250°C

30 sec purge activation time

50 pg per component

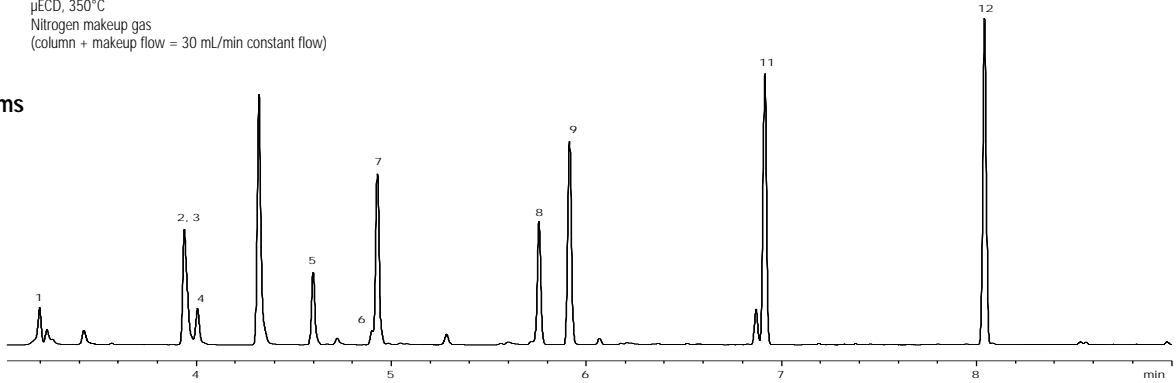
Detector: µECD, 350°C

Nitrogen makeup gas

(column + makeup flow = 30 mL/min constant flow)

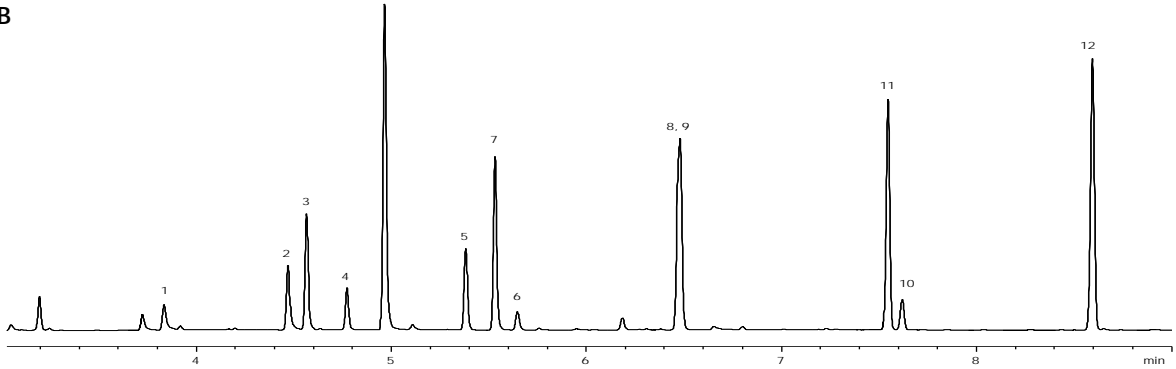
1. Chloroacetic acid
2. Bromoacetic acid
3. Dichloroacetic acid
4. Dalapon
5. Trichloroacetic acid
6. 1,2,3-Trichloropropane (IS)
7. Bromodichloroacetic acid
8. Bromodichloroacetic acid
9. Dibromoacetic acid
10. 2,3-Dibromopropionic acid (SS)
11. Chlorodibromoacetic
12. Tribromoacetic acid

## DB-35ms



C788

## DB-XLB



C788