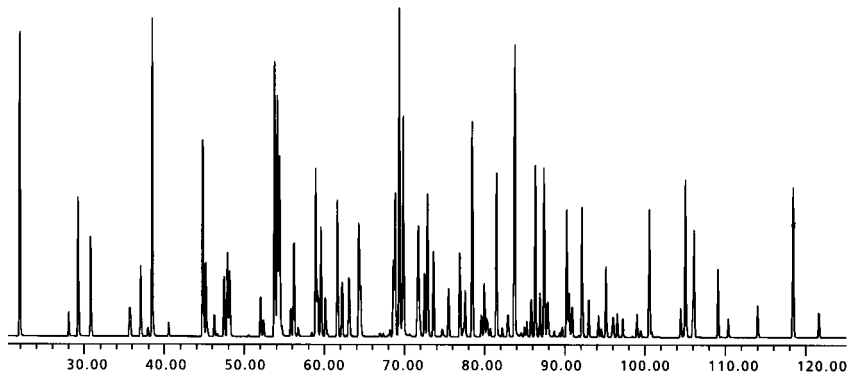


Aroclors 1016-1268 (without 1221)

Column: DB-XLB
 30.0 m x 0.18 mm id, 0.18 µm
P/N: 121-1232
Carrier: Helium at 37 cm/sec,
 measured at 150°C
Oven: 100°C for 1 min
 100-265°C at 1.2°/min
Injector: Hot On-column, 250°C
 1 µL in isoctane, 12.5 ppm
Detector: MSD, SIM, 340°C transfer line



C549

IUPAC	Retention Time	IUPAC	Retention Time	IUPAC	Retention Time	IUPAC	Retention Time	Retention IUPAC	Time
3	26.03	69	64.03	66	75.65	147	87.25	187	98.18
2	32.69	43	64.08	155	75.83	149	87.53	166	98.85
1	33.92	52	64.57	55	76.58	139	87.82	183	99.04
4	35.61	48	64.85	80	77.19	143	87.83	126	99.87
10	35.74	49	65.24	84	77.48	140	88.20	159	100.21
9	40.70	104	65.62	89	77.52	124	88.29	128	100.37
7	40.85	39	65.80	56	77.69	107	88.69	185	100.70
6	42.15	65	65.85	92	77.78	123	88.81	162	101.00
5	43.11	47	65.86	60	78.45	109	88.93	174	101.25
8	43.64	62	65.87	90	78.64	134	89.02	181	101.94
19	45.84	38	65.96	101	78.78	106	89.04	167	101.95
14	46.58	75	66.23	113	79.37	142	89.27	202	102.58
30	48.01	44	67.36	150	79.43	188	89.54	177	102.70
11	50.08	59	67.95	99	79.47	131	89.62	171	103.36
18	50.25	42	67.98	152	80.10	118	89.71	201	103.39
17	50.60	35	68.52	83	80.57	133	90.17	204	103.47
12	50.85	71	68.89	119	80.64	184	90.67	197	103.64
13	51.69	41	68.93	86	80.87	122	90.73	173	105.18
27	51.74	96	69.31	112	80.89	114	91.05	156	105.30
24	52.08	64	70.13	108	81.13	165	91.17	172	105.56
16	52.95	40	70.22	145	81.15	146	91.26	157	105.72
15	53.46	37	70.33	125	81.18	161	91.66	192	106.05
32	53.70	72	70.34	97	81.48	132	91.86	180	106.68
54	54.87	103	70.74	79	81.87	168	92.22	200	106.76
34	55.33	68	70.90	116	82.12	153	92.28	193	107.01
23	55.54	100	71.75	148	82.63	179	92.93	191	107.69
29	56.14	67	71.99	78	82.78	105	93.48	170	110.82
50	57.51	94	71.99	87	82.85	141	93.90	198	110.90
26	57.60	57	72.03	136	82.94	176	94.08	199	111.22
25	57.98	58	72.78	117	83.33	186	94.75	190	111.48
31	59.42	102	73.18	115	83.48	137	95.11	196	112.14
53	59.43	61	73.22	85	83.54	127	95.16	169	112.22
28	59.79	98	73.69	111	83.89	130	95.41	203	112.33
21	59.84	93	73.83	154	83.96	163	95.76	208	115.39
33	60.05	76	73.97	110	84.44	164	95.77	189	116.61
20	60.10	63	74.03	81	84.67	138	96.35	207	116.62
51	60.36	88	74.33	120	84.93	160	96.50	195	116.65
45	61.48	74	74.68	82	85.61	129	96.58	194	120.33
22	61.87	70	75.15	151	85.89	178	96.87	205	121.34
46	62.44	121	75.40	135	86.21	158	96.99	206	124.75
73	63.60	95	75.45	77	86.47	175	97.74	209	128.32
36	63.97	91	75.55	144	86.69	182	97.78		