



Certificate of Analysis

Pesticide Analyzer Checkout Solution

**Agilent Part
Number:** 5190-0468

**Sample Lot
Number:** CP-2813

This analytical reference material was manufactured and verified in accordance with an ISO 9001 registered quality system, and the analyte concentrations were verified by an ISO 17025 accredited laboratory. The certified value for each analyte was determined gravimetrically.

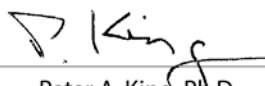
Analyte	CAS#	Analyte Lot	Purity %	Certified Value
dichlorvos	000062-73-7	RM11064	98	10.0 ± 0.1 µg/mL
mevinphos	007786-34-7	RM10706	98	10.0 ± 0.1 µg/mL
ethalfluralin	055283-68-6	RM03735	99	10.0 ± 0.1 µg/mL
trifluralin	001582-09-8	RM05766	99	10.0 ± 0.1 µg/mL
atrazine	001912-24-9	RM10318	99	10.0 ± 0.1 µg/mL
lindane	000058-89-9	RM02694	99	10.0 ± 0.1 µg/mL
chlorpyrifos-methyl	005598-13-0	RM10219	99	10.0 ± 0.1 µg/mL
heptachlor	000076-44-8	RM03111	99	10.0 ± 0.1 µg/mL
malathion	000121-75-5	RM07001	99	10.0 ± 0.1 µg/mL
chlorpyrifos	002921-88-2	RM09198	99	10.0 ± 0.1 µg/mL
dieldrin	000060-57-1	RM03957	98	10.0 ± 0.1 µg/mL
4,4'-DDE	000072-55-9	RM02892	99	10.0 ± 0.1 µg/mL
hexazinone	051235-04-2	RM03124	99	10.0 ± 0.1 µg/mL
propargite	002312-35-8	RM11063	99	10.0 ± 0.1 µg/mL
leptophos	021609-90-5	RM03134	99	9.99 ± 0.05 µg/mL
mirex	002385-85-5	RM07019	99	10.0 ± 0.1 µg/mL
fenarimol	060168-88-9	RM07334	99	10.0 ± 0.1 µg/mL
coumaphos	000056-72-4	RM11062	99	10.0 ± 0.1 µg/mL
ethofenprox	080844-07-1	RM10727	99	10.0 ± 0.1 µg/mL
deltamethrin	052918-63-5	RM10595	99	10.0 ± 0.1 µg/mL

Solvent: acetone

Calibrated Class A glassware and clean bottles were used in the manufacture of this standard. Balances used in the manufacture of this standard are calibrated with weights traceable to NIST in compliance with ANSI/NCSL Z-540-1 and ISO 9001.

Date of release: 14 June 2016

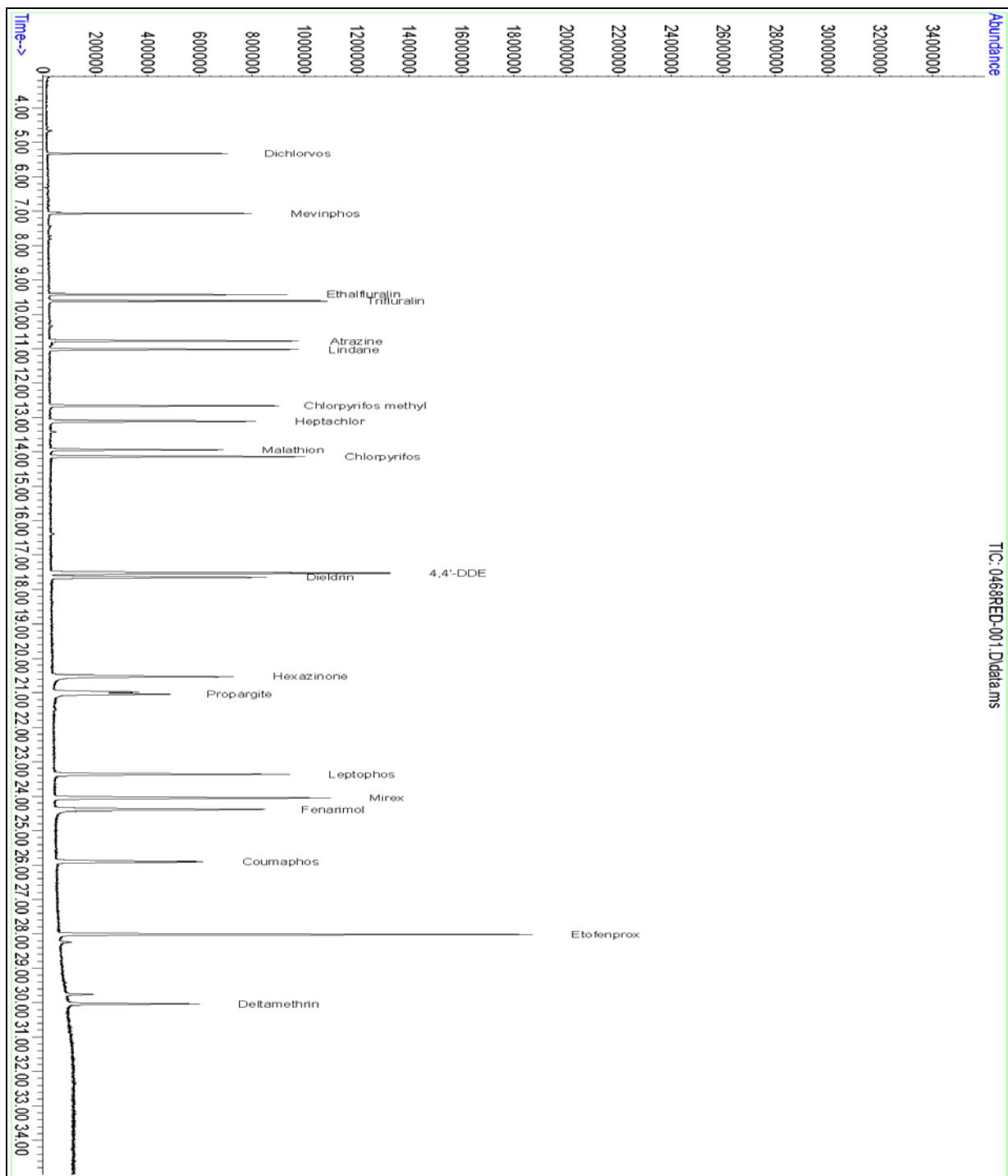
Date of expiration: 31 July 2017

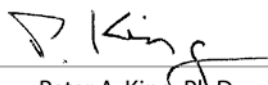

Peter A. King, Ph.D.
VP, Technical Operations


Daniel J. Lamendola
Director of QA/RA



Agilent Technologies




Peter A. King, Ph.D.
VP, Technical Operations


Daniel J. Lamendola
Director of QA/RA