



Certificate of Analysis

Isocratic Sample

Agilent Part

Number: 01080-68704, -68704A

Sample Lot

Number: CR-0049

This analytical reference material was manufactured and verified in accordance with an ISO 9001 registered quality system, and the analyte concentrations were verified by an ISO 17025 accredited laboratory. The certified value for each analyte was determined gravimetrically.

Concentrations:

dimethyl phthalate	1.196 g/L ($\pm 0.5\%$)	0.151 % (w/w)
diethyl phthalate	1.189 g/L ($\pm 0.5\%$)	0.150 % (w/w)
biphenyl	0.0792 g/L ($\pm 0.5\%$)	0.010 % (w/w)
o-terphenyl	0.238 g/L ($\pm 0.5\%$)	0.030 % (w/w)

Solvent: methanol (methyl alcohol)

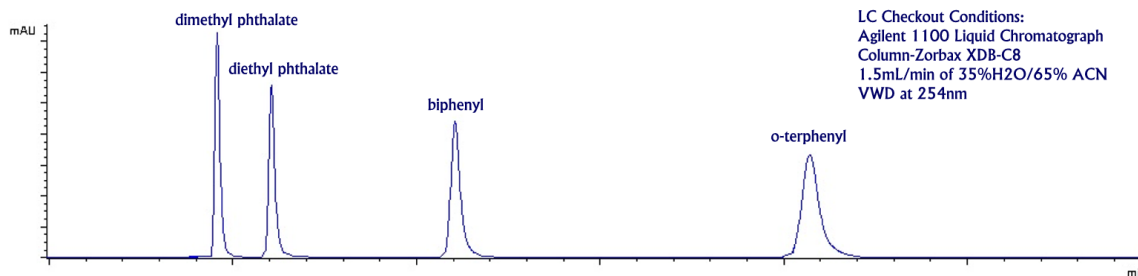
Calibrated Class A glassware and clean bottles were used in the manufacture of this standard. Balances used in the manufacture of this standard are calibrated with weights traceable to NIST in compliance with ANSI/NCSL Z-540-1 and ISO 9001.

Purities:

dimethyl phthalate	99%
diethyl phthalate	99%
biphenyl	99%
o-terphenyl	99%
methanol	99%

Typical Analytical Spectrum or Chromatography

LC Chromatography – dimethyl phthalate, diethyl phthalate, biphenyl, and o-terphenyl in methanol



Date of release: 16 January 2017

Date of expiration: 28 February 2019

John Russo
President

Monica Bourgeois
Director of QA/RA