

CERTIFICATE OF ANALYSIS

PRODUCT: PHYCOLINK® ACTIVATED RPE
PRODUCT CODE: PJRC10
LOT NUMBER: 811 085
BUFFER: 50 mM MES, 2 mM EDTA (pH 6.0)
PRESERVATIVE: 1 µg/ml pentachlorophenol
STORAGE: Store at 2-8°C in the dark. DO NOT FREEZE.

ProZyme Phycopro™ RPE was activated with SMCC (succinimidyl 4-[N-maleimidomethyl]-cyclohexane-1-carboxylate). After a buffer exchange step, the product was filtered using a 0.45 µm membrane and stored in a sterile container.

Spectrophotometric Properties

Absorbance $\lambda_{\text{Max}} = 566 \text{ nm}$

Excitation $\lambda_{\text{Max}} = 566 \text{ nm}$

Emission $\lambda_{\text{Max}} = 576 \text{ nm}$

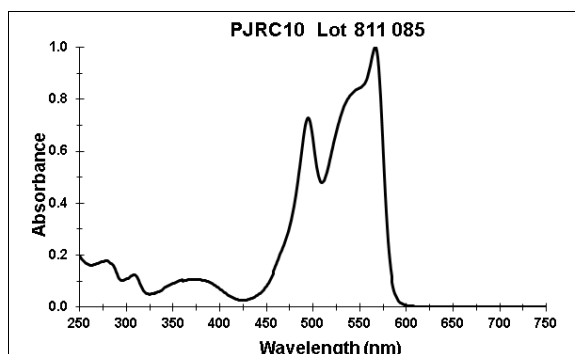
$A_{566}:A_{280} = 5.7$ (≥ 5.0)

Concentration

10.4 mg/ml (9.50-10.5 mg/ml)

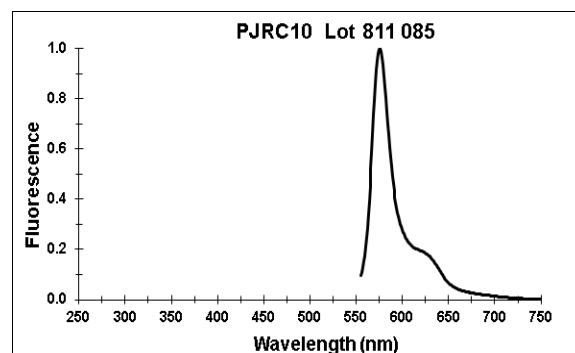
Extinction coefficient, $E_{566}^{1\%} = 82$

Absorbance Spectrum



Fluorescence Emission Spectrum

(arbitrary units; excitation at 545 nm):



Standard Antibody Conjugation Test

Passed ($\geq 50\%$ RPE incorporation)

Authorized Signature

NOTE: Specifications in parentheses

Directions for use of this product may found on ProZyme's web page at <http://www.prozyme.com/documents/pj31kit.pdf>