



## CERTIFICATE OF ANALYSIS

PRODUCT: PHYCOLINK<sup>®</sup> ACTIVATED RPE  
PRODUCT CODE: PJRC10  
LOT NUMBER: 811 083  
BUFFER: 50 mM MES, 2 mM EDTA (pH 6.0)  
PRESERVATIVE: 1 µg/ml pentachlorophenol  
STORAGE: Store at 2-8°C in the dark. DO NOT FREEZE.

ProZyme Phycopro<sup>™</sup> RPE was activated with SMCC (succinimidyl 4-[N-maleimidomethyl]-cyclohexane-1-carboxylate). After a buffer exchange step, the product was filtered using a 0.45 µm membrane and stored in a sterile container.

### Spectrophotometric Properties

Absorbance  $\lambda_{\text{Max}} = 567 \text{ nm}$

Excitation  $\lambda_{\text{Max}} = 566 \text{ nm}$

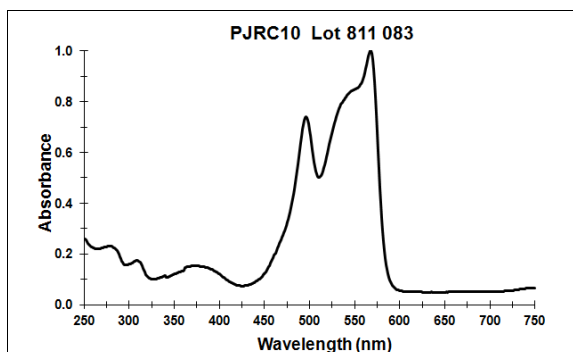
Emission  $\lambda_{\text{Max}} = 576 \text{ nm}$

$A_{566}:A_{280} = 5.6$  ( $\geq 5.0$ )

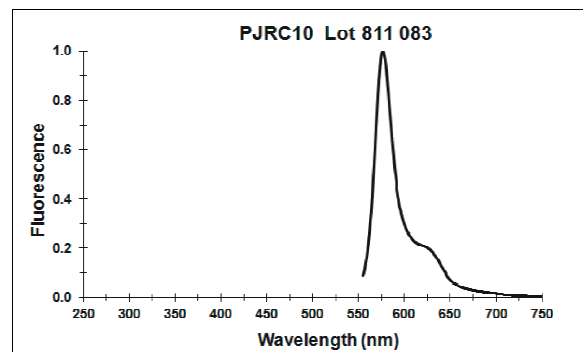
### Concentration

10.2 mg/ml      1% (9.50-10.5 mg/ml)  
Extinction coefficient,  $E_{566} = 82$

### Absorbance Spectrum



### Fluorescence Emission Spectrum (arbitrary units; excitation at 545 nm):



### Standard Antibody Conjugation Test

Passed ( $\geq 50\%$  RPE incorporation)

\_\_\_\_\_  
Authorized Signature

NOTE: Specifications in parentheses

Directions for use of this product may found on ProZyme's web page at <http://www.prozyme.com/documents/pj31kit.pdf>