



## CERTIFICATE OF ANALYSIS

PRODUCT: PHYCOLINK<sup>®</sup> ACTIVATED RPE  
PRODUCT CODE: PJRC10  
LOT NUMBER: 811 073  
BUFFER: 50 mM MES, 2 mM EDTA (pH 6.0)  
PRESERVATIVE: 1 µg/ml pentachlorophenol  
STORAGE: Store at 2-8°C in the dark. DO NOT FREEZE.

ProZyme Phycopro<sup>™</sup> RPE was activated with SMCC (succinimidyl 4-[N-maleimidomethyl]-cyclohexane-1-carboxylate). After a buffer exchange step, the product was filtered using a 0.45 µm membrane and stored in a sterile container.

### Spectrophotometric Properties

Absorbance  $\lambda_{\text{Max}} = 567 \text{ nm}$

Excitation  $\lambda_{\text{Max}} = 561 \text{ nm}$

Emission  $\lambda_{\text{Max}} = 573 \text{ nm}$

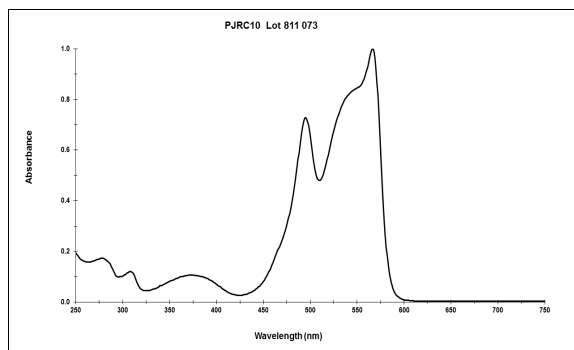
$A_{566}:A_{280} = 5.5$  ( $\geq 5.0$ )

### Concentration

9.95 mg/ml (9.50-10.5 mg/ml)

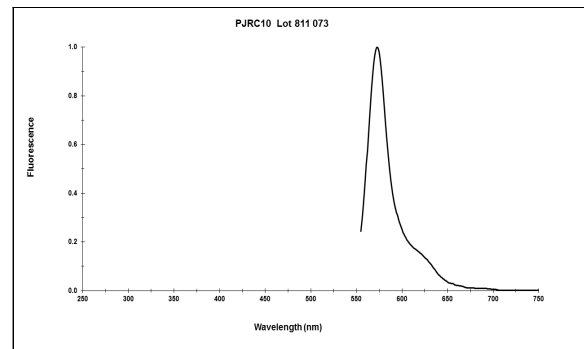
Extinction coefficient,  $E_{566}^{1\%} = 82$

### Absorbance Spectrum



### Fluorescence Emission Spectrum

(arbitrary units; excitation at 545 nm):



### Standard Antibody Conjugation Test

Passed ( $\geq 50\%$  RPE incorporation)

\_\_\_\_\_  
Authorized Signature

NOTE: Specifications in parentheses

Directions for use of this product may found on ProZyme's web page at <http://www.prozyme.com/documents/pj31kit.pdf>

3832 Bay Center Place  
Hayward, CA 94545-3619

TOLL FREE (800) 457-9444  
PHONE (510) 638-6900  
FAX (510) 638-6919

E-MAIL [info@prozyme.com](mailto:info@prozyme.com)  
WEB [www.prozyme.com](http://www.prozyme.com)