

Certificate of Analysis

Product Polyethylene oxide/glycol EasiCal Vials
 Part number 5064-8280
 Batch Number A-PEO-005

| Vial Code | Batch no. | IV (dl/g) | Mw (Light Scattering) | Mv * | Mn * | Mw * | Mw/Mn * | Mp * | Mass/vial mg |
|-----------|-----------|-----------|-----------------------------|-----------|-----------|-----------|---------|------------------|-----------------|
| RED | 20842-8 | 5.0950 | 1,080,000 | 1,227,000 | 1,084,000 | 1,254,000 | 1.16 | 1,258,000 | 0.2 |
| | 20836-9 | 1.3024 | 126,600 | 113,800 | 110,200 | 114,400 | 1.04 | 116,300 | 0.4 |
| | 20710-6 | 0.2571 | 12,260 | 11,940 | 11,260 | 12,050 | 1.07 | 12,140 | 0.6 |
| | 20704-3 | 0.0413 | 630 | 615 | 585 | 620 | 1.06 | 615 | 0.8 |
| BLUE | 20841-20 | 5.0767 | 848,000 | 923,000 | 845,000 | 938,500 | 1.11 | 909,500 | 0.2 |
| | 20834-10 | 0.8070 | 61,100 | 58,950 | 56,250 | 59,350 | 1.06 | 62,100 | 0.4 |
| | 20707-6 | 0.1242 | 4,000 | 3,890 | 3,780 | 3,910 | 1.03 | 3,930 | 0.6 |
| | 20702-2 | - | - | - | - | - | 1.00 | 194 | 0.8 |
| GREEN | 20839-11 | 3.3350 | 460,000 | 444,400 | 421,100 | 448,500 | 1.07 | 442,800 | 0.2 |
| | 20831-10 | 0.4227 | 24,410 | 23,090 | 22,310 | 23,220 | 1.04 | 23,520 | 0.4 |
| | 20706-4 | 0.0644 | 1,480 | 1,490 | 1,450 | 1,500 | 1.04 | 1,500 | 0.6 |
| | 20701-2 | - | - | - | - | - | 1.00 | 106 | 0.8 |

* Results of polymer characterisation by gel permeation chromatography using 0.02% Na₂S₂O₃ in water as the eluent at a flow rate of 1.0ml/min and a temperature of 30°C, PL aquagel-OH columns selected appropriate to the molecular weight of the polymer.

Storage

The polymers in each vial are supplied under argon and the product should be stored in a refrigerator when not in use. After preparation, the polymer solutions should be stored in a cool, dark place and used within 48 hours, after which the solution should be disposed of.

The above characterisation data has been measured according to
Polymer Laboratories Quality Assurance procedures.
 Certificate of Analysis valid until expiry date – 20 December 2010



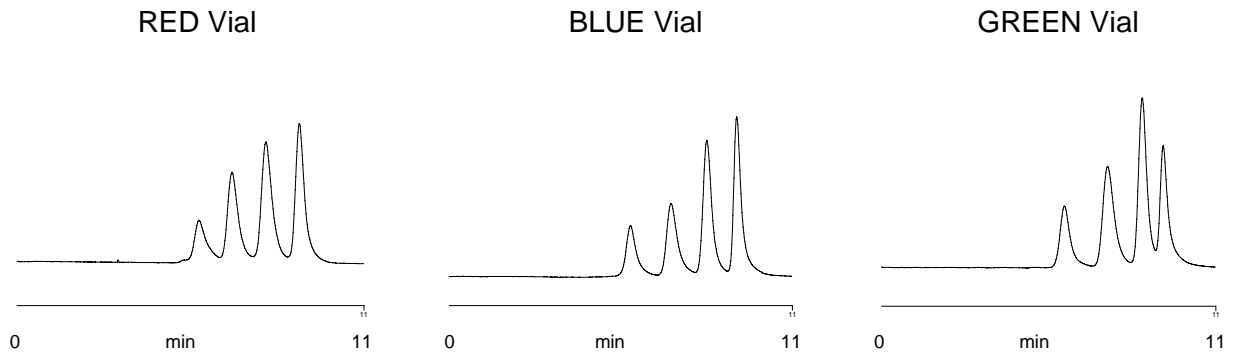
N.W. Titley



D.F. Scholes

PL Quality Department

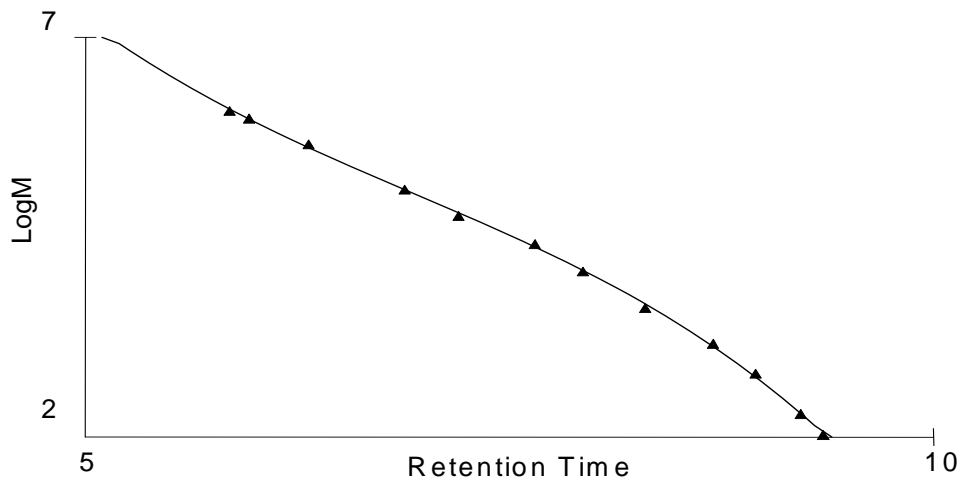
Typical Raw Data Chromatograms



GPC Conditions

Column: PL aquagel-OH MIXED 8 μ m, 300x7.5mm
Eluent: Water (0.02% Na N₃)
Flow Rate: 1.0 ml/min
Inj Volume: 50 μ l
Detector: RI

Typical GPC Calibration



COA AGILENT3 Rev 1.03

Page 2