



Certificate of Analysis

AdvanceBio SEC 300Å Protein Standard

Agilent Part
Number: 5190-9417

Sample Lot
Number: 300A-1018

AdvanceBio SEC 300Å Protein Standard, Lyophilized, 1.5 mL vial

Description:

A mix consisting of 5 carefully selected proteins and peptides (Thyroglobulin, γ -globulin, Ovalbumin, Myoglobin, Angiotensin II). This standard was manufactured and verified under a quality system registered to ISO 9001. The amount of each analyte was determined gravimetrically with a tolerance of $\pm 1.0\%$.

Form: Lyophilized solid
Storage: Store at +2 to +8°C
Shelf life: 12 months

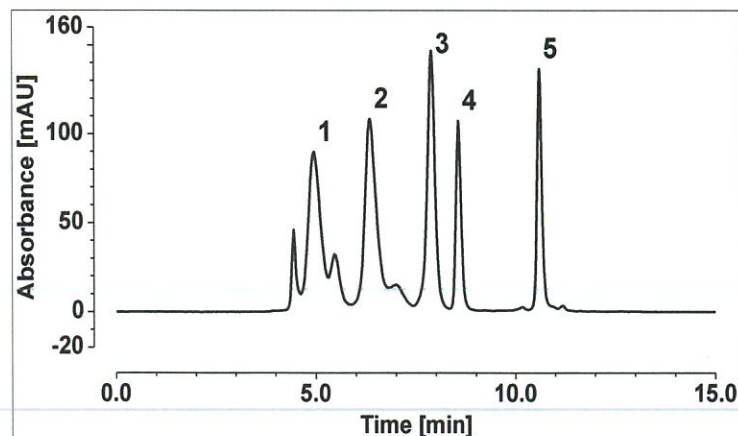
Directions for use:

The lyophilized mixture in each vial contains 3.8 mg total analyte. It is recommended to dilute each vial with 1000 μ l of freshly prepared mobile phase solvent containing 150 mM Sodium Phosphate, pH 7.0. Invert the vial several times gently (do not vortex). Then, sonicate for several minutes to fully reconstitute the sample; avoid elevating temperature.

The product label must be removed in order to use the vial in an Agilent autosampler. After the original product label is removed, please re-label the vial according to your laboratory's best practices.

HPLC chromatogram:

Protein standard 5190-9417 separated on an Agilent AdvanceBio SEC 300Å Column, 4.6 x 300 mm (PL1580-5301).



| Peak # | Analyte | MW (Daltons) |
|--------|-----------------------------|--------------|
| 1 | Thyroglobulin (bovine) | 670,000 |
| 2 | γ -globulin (bovine) | 150,000 |
| 3 | Ovalbumin (chicken) | 45,000 |
| 4 | Myoglobin (equine heart) | 17,000 |
| 5 | Angiotensin II (human) | 1,000 |

*Retention times will vary with different HPLC conditions, column and instrument.



Agilent Technologies

HPLC Method

Sample: AdvanceBio SEC 300Å Protein Standard, prepared as above.
Column: Agilent AdvanceBio SEC 300Å column, 4.6 x 300 mm 2.7 µm
Mobile phase: 150 mM Sodium Phosphate, pH 7.0
Temperature: 25°C
Detection: 220 nm, with reference at 360 nm, 10 Hz
Run Time: 15 minutes
Injection volume and flow rate:

The following table suggests injection volumes for LC analysis based on different internal column diameters.

| Column Description | Part Number | Inj. Volume (µL) | Flow Rate* |
|----------------------|-------------|------------------|-------------|
| 4.6 x 150 mm, 2.7 µm | PL1580-3301 | 2 | 0.35 mL/min |
| 4.6 x 300 mm, 2.7 µm | PL1580-5301 | 2 | 0.35 mL/min |
| 7.8 x 150 mm, 2.7 µm | PL1180-3301 | 5 | 1.0 mL/min |
| 7.8 x 300 mm, 2.7 µm | PL1180-5301 | 5 | 1.0 mL/min |

*Suggested flow rates for optimal column performance.

Date of expiration: 4 November 2022

Certified by:

Melissa Ho
Research Associate II