

ISH Product List 2026

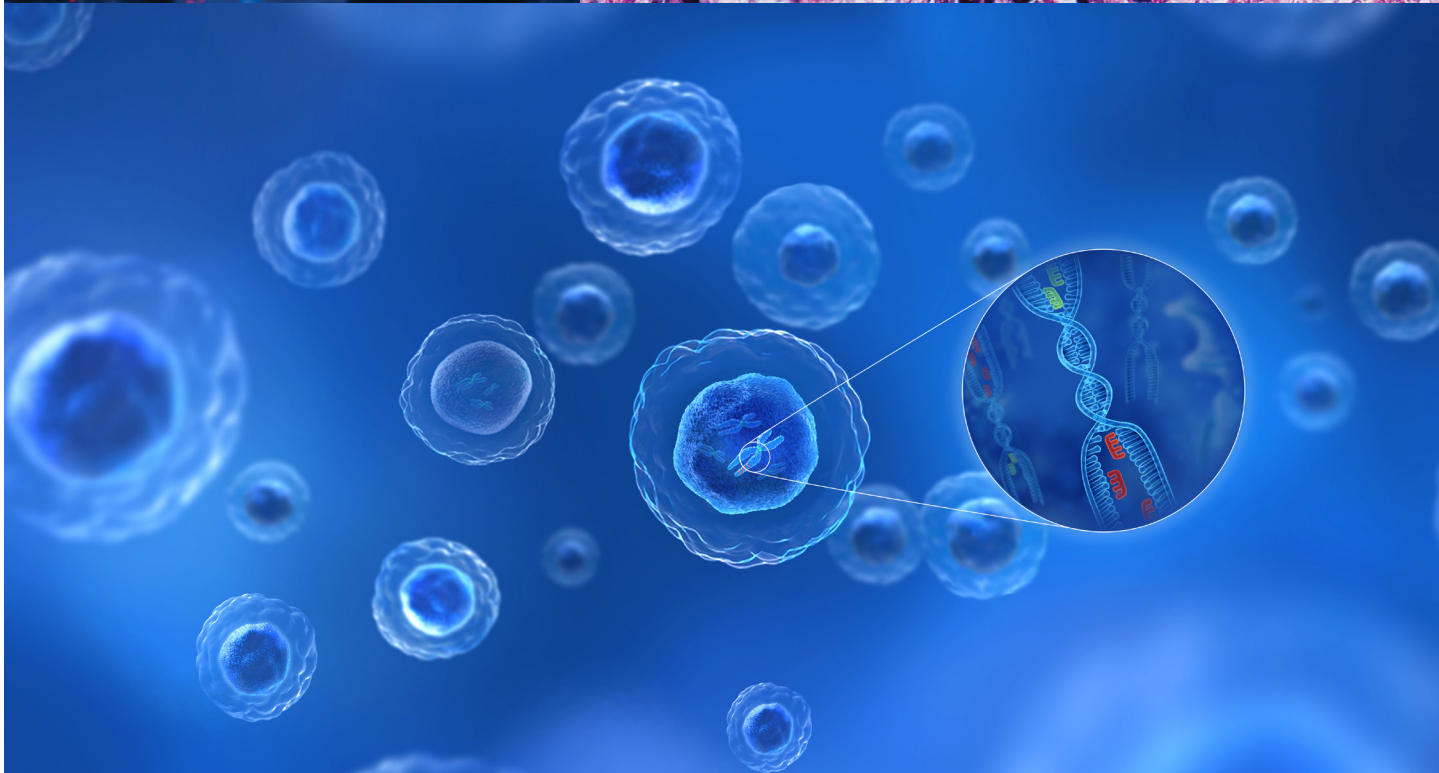
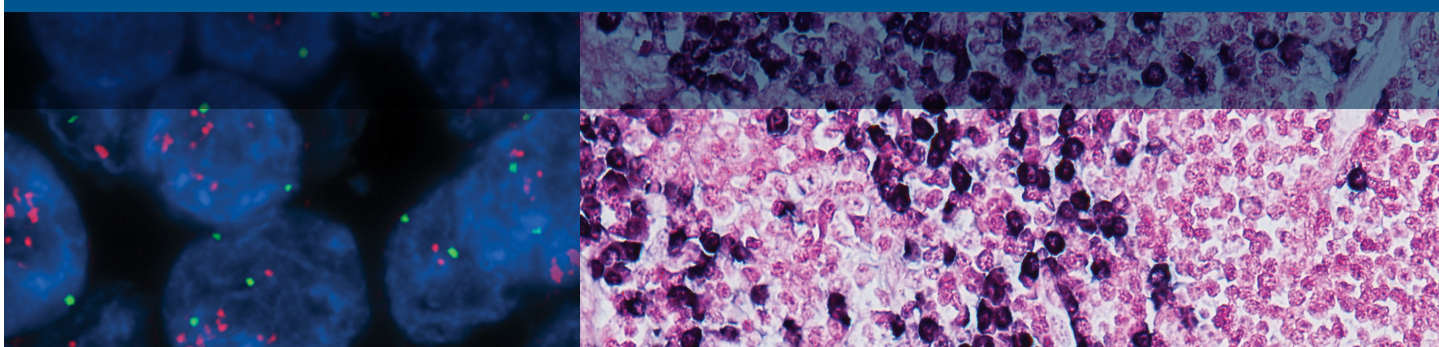




Table of Contents

Diagnostic IQFISH Assays for Manual Use	4
Accessory Kit for manual FISH test	5
<i>HER2</i> IQFISH pharmDx Kit	5
CISH and ISH Accessories for Dako Omnis	6
CISH Accessory Kit	6
Accessories for Dako Omnis ISH assays	7
SureFISH Probes (Analyte Specific Reagent)	8
Paired probes	8
Break apart probes	8
Copy number and dual fusion probes	11
Centromere enumeration probes	14
High volume probes	16
High volume paired probes	17
Custom probes (Research use only)	18
FISH Accessories	18
Manual ISH accessories	18
Automated ISH accessories	18
Fluorochromes used in SureFISH assays	19
Fluorochromes used in <i>HER2</i> IQFISH pharmDx assays	19
SureFISH Probes Scientific Publications	19

Diagnostic IQFISH Assays for Manual Use

Fastest time to result

Combining the established quality of SureFISH with our first to market IQFISH Fast Hybridization Buffer, allows Agilent to offer our customers a ready-to-use solution for FISH diagnostic assays. The result is higher signal-to-noise ratios in a less than 4-hour turnaround time, reducing the costs associated with labor and assay failures. Our high quality probes, combined with Dako Histology FISH Accessory Kit, ensure consistent bright signals and superior tissue morphology.

Accessory kit for manual FISH test

The kit includes Pre-Treatment Solution, Pepsin, Pepsin Diluent, Stringent Wash Buffer, Fluorescence Mounting Medium, Wash Buffer, and Coverslip Sealant.

	Part number	Description	Size	Regulatory status
Accessory kit	K579911-5	Dako Histology FISH Accessory Kit for IQFISH	20 tests	IVD



Figure 1. Dako Histology FISH Accessory Kit for IQFISH.

HER2 IQFISH pharmDx Kit

The below kit includes IVD ready to use probes and accessories needed to perform the test. *HER2* IQFISH pharmDx is a direct fluorescence in situ hybridization (FISH) assay designed to quantitatively determine *HER2* gene amplification in formalin-fixed, paraffin-embedded (FFPE) **breast** cancer tissue specimens and metastatic **gastric or gastroesophageal** junction adenocarcinoma. It is indicated as an aid in the assessment of breast and gastric cancer patients for whom **Herceptin**[®] (trastuzumab) treatment is being considered and for breast cancer patients for whom **PERJETA**[™] (pertuzumab) or **KADCYLA**[™] (ado-trastuzumab emtansine) treatment is being considered.

Target	Part number	Description	Probe type	Fluorochrome	Size	Regulatory status
HER2	K573111-5	<i>HER2</i> IQFISH pharmDx	Copy Number	Texas Red/FITC	20 tests	IVD

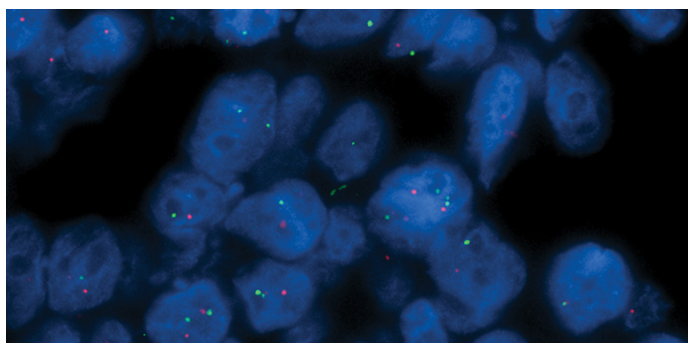


Figure 2. *HER2* FISH, nonamplified case.

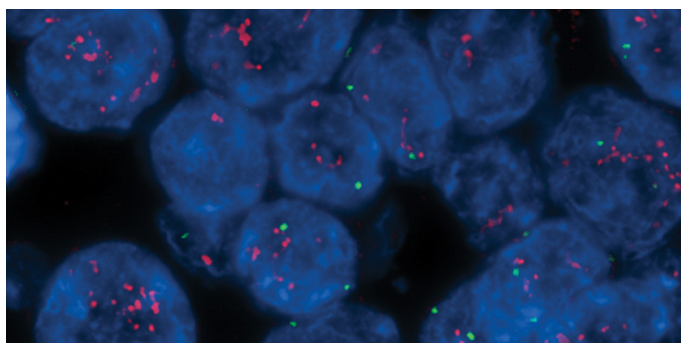


Figure 3. *HER2* FISH, amplified case.

CISH and ISH Accessories for Dako Omnis

CISH Accessory Kit

The CISH detection reagents enable the automated chromogenic visualization of mRNA expression on FFPE tissue samples. The formamide free IQFISH hybridization buffer enables CISH results in about 5 hours.

An accessory kit is required for the chromogenic visualization on Dako Omnis. The kit includes CISH Endogenous Enzyme block, Anti-FITC-AP, BCIP-NBT Substrate, and Nuclear Fast Red.

Part number	Description	Test type	Kit size	Regulatory status
K589911-2	Anti-FITC/AP CISH Accessory Kit (Dako Omnis)	CISH	40 tests	IVD

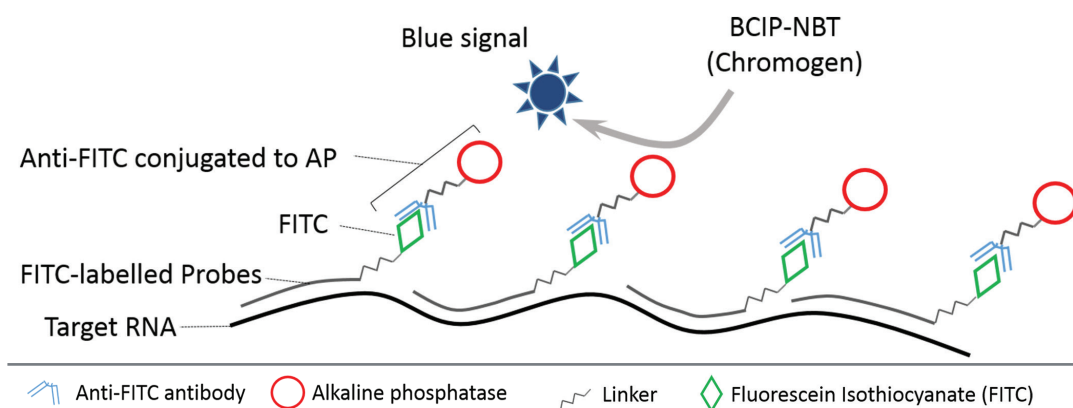


Figure 4. Schematic of method for detection of FITC-labeled probes. Anti-FITC-AP: Alkaline phosphatase-conjugated antibody to fluorescein. BCIP-NBT substrate: 5-bromo-4-chloro-3-indolylphosphate (BCIP) and nitroblue tetrazolium (NBT).

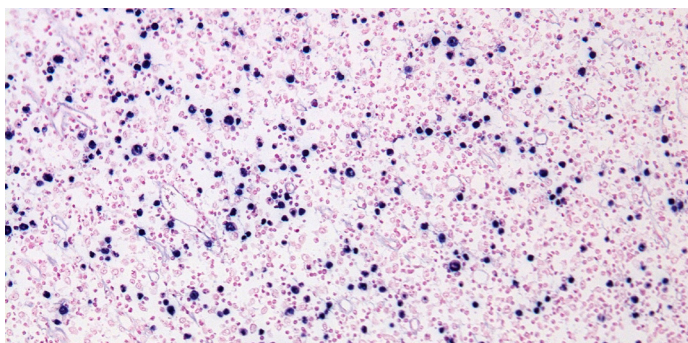


Figure 5. FFPE sample stained with EBER probe.

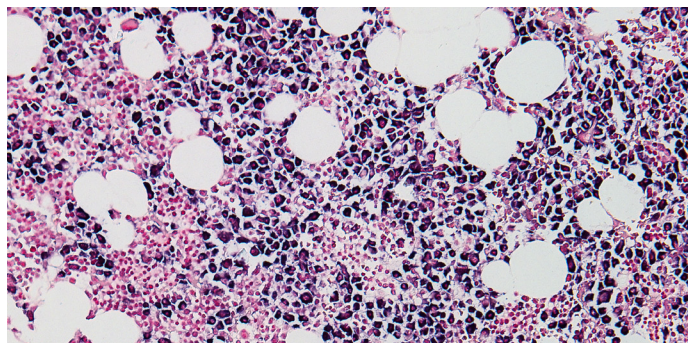


Figure 6. Bone marrow stained with Kappa probe.

Accessories for Dako Omnis ISH Assays

Accessories needed to perform FISH on Dako Omnis

Part number	Description	Size	Regulatory status
GM30211-5	ISH Pepsin (Dako Omnis)	20 tests, 7 mL	IVD
GM30011-5	ISH Ethanol Solution 96 (Dako Omnis)	20 tests, 14 mL	IVD
GM30111-2	ISH Pre-Treatment Solution (Dako Omnis)	175 mL, 5–25 tests	IVD
GM30311-2	ISH Stringent Wash Buffer (Dako Omnis)	175 mL, 5–25 tests	IVD
GM30411-2	Fluorescence Mounting Medium (Dako Omnis)	0.8 mL, 20–40 tests	IVD
GC20730-2	ISH Cleaning Solution (Dako Omnis)	10 mL, 100 tests	IVD
GC10230	Dako Omnis ISH Lid	Box of five	IVD
GC11630	Dako Omnis Mixing Device	One mixer	IVD

**Only to be used with concentrated probes*



Figure 7. Dako Omnis ISH ancillaries.



Figure 8. Dako Omnis Mixing Device.

SureFISH Probes (Analyte Specific Reagent)

SureFISH paired probes

Target	Part number	Description	Probe type	Fluorochrome	Volume (µL)	Regulatory status
ALK	G111400	SureFISH ALK BA P20	Break Apart	Cy3/FITC	20	ASR Class I
ROS1	G111401	SureFISH ROS1 BA P20	Break Apart	Cy3/FITC	20	ASR Class I
RET	G111402	SureFISH RET BA P20	Break Apart	Cy3/FITC	20	ASR Class I
MALT1	G111420	SureFISH MALT1 BA P20	Break Apart	Cy3/FITC	20	ASR Class I
BCL2	G111421	SureFISH BCL2 BA P20	Break Apart	Cy3/FITC	20	ASR Class I
BCL6	G111422	SureFISH BCL6 BA P20	Break Apart	Cy3/FITC	20	ASR Class I
MYC	G111423	SureFISH MYC BA P20	Break Apart	Cy3/FITC	20	ASR Class I
IGH	G111424	SureFISH IGH BA P20	Break Apart	Cy3/FITC	20	ASR Class I
IGH/MYC	G111425	SureFISH IGH MYC DF P20	Dual Fusion	Cy3/FITC	20	ASR Class I
IGH/BCL2	G111426	SureFISH IGH BCL2 DF P20	Dual Fusion	Cy3/FITC	20	ASR Class I
IGH/CCND1	G111442	SureFISH IGH CCND1 DF P20	Dual Fusion	Cy3/FITC	20	ASR Class I
CCND1	G111443	SureFISH CCND1 BA P20	Break Apart	Cy3/FITC	20	ASR Class I
PML-RARA	G110425	SureFISH PML-RARA DF P20	Dual Fusion	Cy3/FITC	20	ASR Class I

SureFISH concentrated probes (20 µL)

Break apart probes

Target	Part number	Description	Probe type	Fluorochrome	Volume (µL)	Regulatory status
ABL1	G110420G	SureFISH 9q34.12 ABL1 3' BA 350 kb P20 GR	Break Apart	FITC	20	ASR Class I
	G110419R	SureFISH 9q34.11 ABL1 5' BA 350 kb P20 RD		Cy3	20	
ABL2	G110418G	SureFISH 1q25.2 ABL2 3' BA 464 kb P20 GR	Break Apart	FITC	20	ASR Class I
	G110417R	SureFISH 1q25.2 ABL2 5' BA 571 kb P20 RD		Cy3	20	
BCL3	G110290G	SureFISH 19q13.32 BCL3 3' BA 451 kb P20 GR	Break Apart	FITC	20	ASR Class I
	G110290R	SureFISH 19q13.31 BCL3 5' BA 305 kb P20 RD		Cy3	20	
BRAF	G110400G	SureFISH 7q34 BRAF 5' BA 510 kb P20 GR	Break Apart	FITC	20	ASR Class I
	G110399R	SureFISH 7q34 BRAF 3' BA 414 kb P20 RD		Cy3	20	
CBFB	G110245G	SureFISH 16q22.1 CBFB 3' BA 284 kb P20 GR	Break Apart	FITC	20	ASR Class I
	G110244R	SureFISH 16q22.1 CBFB 5' BA 240 kb P20 RD		Cy3	20	
CHIC2	G110305R	SureFISH 4q12 CHIC2 469 kb P20 RD	Break Apart	Cy3	20	ASR Class I
FIP1L1	G110439G	SureFISH 4q12 FIP1L1 TC 500 kb P20 GR		FITC	20	
PDGFRA	G110827B	SureFISH 4q12 PDGFRA TC 481 kb P20 BL		Aqua	20	
CIC	G110204G	SureFISH 19q13.2 CIC 5' BA 619 kb P20 GR	Break Apart	FITC	20	ASR Class I
	G110203R	SureFISH 19q13.2 CIC 3' BA 239 kb P20 RD		Cy3	20	
CRLF2	G110980G	SureFISH Xp22/Yp11 CRLF2 5' BA P20 GR	Break Apart	FITC	20	ASR Class I
	G110979R	SureFISH Xp22/Yp11 CRLF2 3' BA P20 RD		Cy3	20	
CSF1R	G110410G	SureFISH 5q32 CSF1R 3' BA 402 kb P20 GR	Break Apart	FITC	20	ASR Class I
	G110411R	SureFISH 5q32 CSF1R 5' BA 465 kb P20 RD		Cy3	20	
DDIT3	G110982G	SureFISH 12q13 DDIT3 3' BA 537 kb P20 GR	Break Apart	FITC	20	ASR Class I
	G110983R	SureFISH 12q14 DDIT3 5' BA 498 kb P20 RD		Cy3	20	
DUSP22-IRF4	G110713G	SureFISH 6p25.3 DUSP22-IRF4 3' 235 kb P20 GR	Break Apart	FITC	20	ASR Class I
	G110712R	SureFISH 6p25.3 DUSP22-IRF4 5' 48 kb P20 RD		Cy3	20	

Target	Part number	Description	Probe type	Fluorochrome	Volume (µL)	Regulatory status
EPOR	G110413G	SureFISH 19p13.2 EPOR 5' BA 291 kb P20 GR	Break Apart	FITC	20	ASR Class I
	G110412R	SureFISH 19p13.2 EPOR 3' BA 299 kb P20 RD		Cy3	20	
ERG TMPRSS2	G110816G	SureFISH 21q22.2 ERG 5' BA 552 kb P20 GR	Break Apart	FITC	20	ASR Class I
	G110802R	SureFISH 21q22.13 ERG 3' BA 426 kb P20 RD		Cy3	20	
	G110820B	SureFISH 21q22.3 TMPRSS2 5' TC 529 kb BL		Aqua	20	
ETV6	G110274G	SureFISH 12p13.2 ETV6 5' BA 460 kb P20 GR	Break Apart	FITC	20	ASR Class I
	G110273R	SureFISH 12p13.2 ETV6 3' BA 384 kb P20 RD		Cy3	20	
EWSR1	G110456G	SureFISH 22q12.2 EWSR1 5' BA 564 kb P20 GR	Break Apart	FITC	20	ASR Class I
	G110392R	SureFISH 22q12.2 EWSR1 3' BA 263 kb P20 RD		Cy3	20	
FGFR1	G110469G	SureFISH 8p11.23 FGFR1 3' BA 393 kb P20 GR	Break Apart	FITC	20	ASR Class I
	G110470R	SureFISH 8p11.22 FGFR1 5' BA 515 kb P20 RD		Cy3	20	
FGFR2	G110726G	SureFISH 10q26.12 FGFR2 3' BA 400 kb P20 GR	Break Apart	FITC	20	ASR Class I
	G110725R	SureFISH 10q26.13 FGFR2 5' BA 400 kb P20 RD		Cy3	20	
FGFR3	G110471G	SureFISH 4p16.3 FGFR3 3' BA 373 kb P20 GR	Break Apart	FITC	20	ASR Class I
	G110472R	SureFISH 4p16.3 FGFR3 5' BA 316 kb P20 RD		Cy3	20	
FLT3	G110326G	SureFISH 13q12.2 FLT3 5' BA 496 kb P20 GR	Break Apart	FITC	20	ASR Class I
	G110325R	SureFISH 13q12.2 FLT3 3' BA 428 kb P20 RD		Cy3	20	
FOSB	G110474G	SureFISH 19q13.32 FOSB 5' BA 430 kb P20 GR	Break Apart	FITC	20	ASR Class I
	G110475R	SureFISH 19q13.32 FOSB 3' BA 619 kb P20 RD		Cy3	20	
FOXO1	G110986G	SureFISH 13q14.11 FOXO1 3' BA 600 kb P20 GR	Break Apart	FITC	20	ASR Class I
	G110987R	SureFISH 13q14.11 FOXO1 5' BA 601 kb P20 RD		Cy3	20	
IGK	G110732G	SureFISH 2p11.2 IGK 5' BA 1063 kb P20 GR	Break Apart	FITC	20	ASR Class I
	G110731R	SureFISH 2p11.2 IGK 3' BA 252 kb P20 RD		Cy3	20	
IGL	G110729G	SureFISH 22q11.22 IGL 5' BA 946 kb P20 GR	Break Apart	FITC	20	ASR Class I
	G110730R	SureFISH 22q11.22 IGL 3' BA 343 kb P20 RD		Cy3	20	
JAK2	G110201G	SureFISH 9p24.1 JAK2 3' BA 503 kb P20 GR	Break Apart	FITC	20	ASR Class I
	G110200R	SureFISH 9p24.1 JAK2 5' BA 286 kb P20 RD		Cy3	20	
MECOM	G110447G	SureFISH 3q26.2 MECOM 3' BA 451kb P20 GR	Break Apart	FITC	20	ASR Class I
	G110361R	SureFISH 3q26.2 MECOM 5' BA 408 kb P20 RD		Cy3	20	
	G110806B	SureFISH 3q26.2 MECOM 5' TC 437 kb P20 BL		Aqua	20	
MGEA5	G110429G	SureFISH 10q24.32 MGEA5 3' BA 743 kb P20 GR	Break Apart	FITC	20	ASR Class I
	G110209R	SureFISH 10q24.32 MGEA5 5' BA 353 kb P20 RD		Cy3	20	
MLL	G110254G	SureFISH 11q23 MLL 5' BA 497 kb P20 GR	Break Apart	FITC	20	ASR Class I
	G110253R	SureFISH 11q23 MLL 3' BA 199 kb P20 RD		Cy3	20	
MLLT10	G110705G	SureFISH 10P12.31 MLLT10 5' BA 673 kb P20 GR	Break Apart	FITC	20	ASR Class I
	G110704R	SureFISH 10p12.31 MLLT10 3' BA 465 kb P20 RD		Cy3	20	
NRG1	G110219G	SureFISH 8p12 NRG1 5' BA 460 kb P20 GR	Break Apart	FITC	20	ASR Class I
	G110218R	SureFISH 8p12 NRG1 3' BA 248 kb P20 RD		Cy3	20	
NTRK1	G110430G	SureFISH 1q23.1 NTRK1 5' BA 182 kb P20 GR	Break Apart	FITC	20	ASR Class I
	G110214R	SureFISH 1q23.1 NTRK1 3' BA 140 kb P20 RD		Cy3	20	
	G110719G	SureFISH 1q23.1 NTRK1 5' BA 478 kb P20 GR		FITC	20	
	G110720R	SureFISH 1q23.1 NTRK1 3' BA 380 kb P20 RD		Cy3	20	
NTRK2	G110721G	SureFISH 9q21.33 NTRK2 5' BA 406 kb P20 GR	Break Apart	FITC	20	ASR Class I
	G110722R	SureFISH 9q 21.33 NTRK2 3' BA 445 kb P20 RD		Cy3	20	
NTRK3	G110431G	SureFISH 15q25.3 NTRK3 5' 373 kb P20 GR	Break Apart	FITC	20	ASR Class I
	G110215R	SureFISH 15q25.3 NTRK3 3' 390 kb P20 RD		Cy3	20	
	G110723G	SureFISH 15q25.3 NTRK3 5' BA 481 kb P20 GR		FITC	20	
	G110724R	SureFISH 15q25.3 NTRK3 3' BA 435 kb P20 RD		Cy3	20	
NUP98	G110441G	SureFISH 11p15.4 NUP98 5' BA 416 kb P20 GR	Break Apart	FITC	20	ASR Class I
	G110718R	SureFISH 11p15.4 NUP98 3' BA 359 kb P20 RD		Cy3	20	
	G110309R	SureFISH 11p15.4 NUP98 3' BA 132 kb P20 RD		Cy3	20	
PAX3	G110206G	SureFISH 2q36.1 PAX3 3' BA 575 kb P20 GR	Break Apart	FITC	20	ASR Class I
	G110205R	SureFISH 2q36.1 PAX3 5' BA 285 kb P20 RD		Cy3	20	
PDGFB	G110404G	SureFISH 5q32 PDGFB 5' BA 429kb P20 GR	Break Apart	FITC	20	ASR Class I
	G110405R	SureFISH 5q32 PDGFB 3' BA 362kb P20 RD		Cy3	20	

Target	Part number	Description	Probe type	Fluorochrome	Volume (µL)	Regulatory status
PDGFD	G110407G G110406R	SureFISH 11q22.3 PDGFD 5' BA 350 kb P20 GR SureFISH 11q22.3 PDGFD 3' BA 350 kb P20 RD	Break Apart	FITC Cy3	20 20	ASR Class I
PDGFRB	G110304G G110303R	SureFISH 5q32 PDGFRB 5' BA 435 kb P20 GR SureFISH 5q32 PDGFRB 3' BA 354 kb P20 RD	Break Apart	FITC Cy3	20 20	ASR Class I
PHF1	G110235G G110234R	SureFISH 6p21.32 PHF1 3' BA 616 kb P20 GR SureFISH 6p21.32 PHF1 5' BA 355 kb P20 RD	Break Apart	FITC Cy3	20 20	ASR Class I
PLAG1	G110227G G110226R	SureFISH 8q12.1 PLAG1 5' BA 625 kb P20 GR SureFISH 8q12.1 PLAG1 3' BA 295 kb P20 RD	Break Apart	FITC Cy3	20 20	ASR Class I
PPARG	G110728G G110727R	SureFISH 3p25.2 PPARG 3' BA 400 kb P20 GR SureFISH 3p25.2 PPARG 5' BA 398 kb P20 RD	Break Apart	FITC Cy3	20 20	ASR Class I
RARA	G110452G G110282R	SureFISH 17q21.1 RARA 5' BA 600 kb P20 GR SureFISH 17q21.2 RARA 3' BA 419 kb P20 RD	Break Apart	FITC Cy3	20 20	ASR Class I
ROS1	G110454G G110389R	SureFISH 6q22.1 ROS1 3' BA 1132 kb P20 GR SureFISH 6q22.1 ROS1 5' BA 245 kb P20 RD	Break Apart	FITC Cy3	20 20	ASR Class I
RUNX1	G110409G G110408R	SureFISH 21q22.12 RUNX1 5' BA 569 kb P20 GR SureFISH 21q22.12 RUNX1 3' BA 563 kb P20 RD	Break Apart	FITC Cy3	20 20	ASR Class I
SIL-TAL1	G110707G G110706R	SureFISH 1p33 SIL 3' BA 566 kb P20 GR SureFISH 1p33 TAL1 5' BA 75 kb P20 RD	Break Apart	FITC Cy3	20 20	ASR Class I
SS18 (SYT)	G110457G G110394R	SureFISH 18q11.2 SS18 3' BA 616 kb P20 GR SureFISH 18q11.2 SS18 5' BA 406 kb P20 RD	Break Apart	FITC Cy3	20 20	ASR Class I
TCL1	G110709G G110708R	SureFISH 14q32.2 TCL1 3' BA 504 kb P20 GR SureFISH 14q32.13 TCL1 5' BA 361 kb P20 RD	Break Apart	FITC Cy3	20 20	ASR Class I
TCRAD	G110364G G110363R	SureFISH 14q11.2 TCRAD 5' BA 468 kb P20 GR SureFISH 14q11.2 TCRAD 3' BA 305 kb P20 RD	Break Apart	FITC Cy3	20 20	ASR Class I
TFEB	G110243G G110242R	SureFISH 6p21.1 TFEB 3' BA 323 kb P20 GR SureFISH 6p21.1 TFEB 5' BA 288 kb P20 RD	Break Apart	FITC Cy3	20 20	ASR Class I
TFE3	G110460G G110459R	SureFISH Xp11.2 TFE3 3' BA 540 kb P20 GR SureFISH Xp11.2 TFE3 5' BA 237 kb P20 RD	Break Apart	FITC Cy3	20 20	ASR Class I
TGFBR3	G110208G G110207R	SureFISH 1p22.1 TGFBR3 5' BA 621 kb P20 GR SureFISH 1p22.1 TGFBR3 3' BA 402 kb P20 RD	Break Apart	FITC Cy3	20 20	ASR Class I
TLX3	G110369G G110368R	SureFISH 5q35.1 TLX3 3' BA 416 kb P20 GR SureFISH 5q35.1 TLX3 5' BA 325 kb P20 RD	Break Apart	FITC Cy3	20 20	ASR Class I
TP63	G110715G G110714R	SureFISH 3q28 TP63 3' BA 443 kb P20 GR SureFISH 3q28 TP63 5' BA 372 kb P20 RD	Break Apart	FITC Cy3	20 20	ASR Class I
TRB	G110701G G110700R	SureFISH 7q34 TRB 5' BA 583 kb P20 GR SureFISH 7q34 TRB 3' BA 390 kb P20 RD	Break Apart	FITC Cy3	20 20	ASR Class I
TRG	G110703G G110702R	SureFISH 7p14.1 TRG 5' BA 586 kb P20 GR SureFISH 7p14.1 TRG 3' BA 349 kb P20 RD	Break Apart	FITC Cy3	20 20	ASR Class I
USP6	G110711G G110710R	SureFISH 17p13.2 USP6 5' BA 400 kb P20 GR SureFISH 17p13.2 USP6 3' BA 385 kb P20 RD	Break Apart	FITC Cy3	20 20	ASR Class I
YWHAE	G110225G-8 G110224R-8	SureFISH 17p13.3 YWHAE 3' BA 608 kb P20 GR SureFISH 17p13.3 YWHAE 5' BA 261 kb P20 RD	Break Apart	FITC Cy3	20 20	ASR Class I

SureFISH concentrated probes (20 µL)

Copy number and dual fusion probes

Target	Part number	Description	Probe type	Fluorochrome	Volume (µL)	Regulatory status
Chr. 1p/19q	G110385R	SureFISH 1p36.32 TPRG1L 332 kb P20 RD	Copy Number (Dual color)	Cy3	20	ASR Class I
	G110891G	SureFISH 1q25.2 ABL2 600 kb P20 GR		FITC	20	
	G110386R	SureFISH 19q13.33 GLTSCR2 298 kb P20 RD		Cy3	20	
	G110897G	SureFISH 19p13.2 ZNF443 513 kb P20 GR		FITC	20	
Chr.1p/19q	G110736B	SureFISH 1q25.2 ABL2 600 kb P20 BL	Copy Number (Tricolor)	Aqua	20	ASR Class I
	G110385R	SureFISH 1p36.32 TPRG1L 332 kb P20 RD		Cy3	20	
	G110831G	SureFISH Chr1 CEP 541 kb P20 GR		FITC	20	
	G110735B	SureFISH 19p13.2 ZNF443 513 kb P20 BL		Aqua	20	
	G110875G	SureFISH Chr19 CEP 527 kb P20 GR		FITC	20	
	G110386R	SureFISH 19q13.33 GLTSCR2 298 kb P20 RD		Cy3	20	
ABL	G110391R	SureFISH 9q34.12 ABL DF 640 kb P20 RD	Dual Fusion	Cy3	20	ASR Class I
BCR	G110455G	SureFISH 22q11.23 BCR DF 1388 kb P20 GR		FITC	20	
ASS1	G110833B	SureFISH 9q34.11 ASS1 DF 367 kb P20 BL		Aqua	20	
AHR	G110403R	SureFISH 7p21.1 AHR 150 kb P20 RD	Copy Number	Cy3	20	ASR Class I
CEP 7	G110899G	SureFISH Chr7 CEP 767 kb P20 GR		FITC	20	
ASPCR1	G110435G	SureFISH 17q25.3 ASPSCR1 406 kb P20 GR	Copy Number	FITC	20	ASR Class I
CEP 17	G110291R	SureFISH Chr17 CEP 436 kb P20 RD		Cy3	20	
ATM	G110360G	SureFISH 11q22.3 ATM 732 kb P20 GR	Copy Number	FITC	20	ASR Class I
TP53	G110383R	SureFISH 17p13.1 TP53 120 kb P20 RD		Cy3	20	
D13S319	G110252R	SureFISH 13q14.2 D13S319 154 kb P20 RD	Copy Number	Cy3	20	ASR Class I
CEP12	G110890G	SureFISH Chr12 CEP 704 kb P20 GR		FITC	20	
LAMP1	G110800B	SureFISH 13q34 LAMP1 598 kb P20 BL		Aqua	20	
ATM	G110251R	SureFISH 11q22.3 ATM 153 kb P20 RD	Copy Number	Cy3	20	ASR Class I
CEP11	G110883G	SureFISH Chr11 CEP 798 kb P20 GR		FITC	20	
BCL3	G110473R	SureFISH 19q13.32 BCL3 DF 565 kb P20 RD	Dual Fusion	Cy3	20	ASR Class I
IGH	G110995G	SureFISH 14q32.33 IGH DF 1519 kb P20 GR		FITC	20	
BCOR	G110432G	SureFISH Xp11.4 BCOR 1009 kb P20 GR	Copy Number	FITC	20	ASR Class I
CEP X	G110259R	SureFISH ChrX CEP 587 kb P20 RD		Cy3	20	
BIRC3	G110373R	SureFISH 11q22.2 BIRC3 DF 674 kb P20 RD	Dual Fusion	Cy3	20	ASR Class I
MALT1	G110374G	SureFISH 18q21.32 MALT1 DF 672 kb P20 GR		FITC	20	
BRAF	G110258R	SureFISH 7q34 BRAF 227 kb P20 RD	Dual Fusion	Cy3	20	ASR Class I
KIAA1549	G110750G	SureFISH 7q34 KIAA1549 150 kb P20 GR		FITC	20	
CAMTA1	G110216R	SureFISH 1p36.23 CAMTA1 DF 647 kb P20 RD	Dual Fusion	Cy3	20	ASR Class I
WWTR1	G110217G	SureFISH 3q25.1 WWTR1 DF 619 kb P20 GR		FITC	20	
CCNB3	G110480R	SureFISH Xp11.22 CCNB3 DF 683 kb P20 RD	Dual Fusion	Cy3	20	ASR Class I
BCOR	G110423G	SureFISH Xp11.4 BCOR DF 1009 kb P20 GR		FITC	20	
CCND1	G110212R	SureFISH 11q13.3 CCND1 997 kb P20 RD	Copy Number	Cy3	20	ASR Class I
CEP 11	G110883G	SureFISH Chr11 CEP 798 kb P20 GR		FITC	20	
CCND1	G110976G	SureFISH 11q13.2 CCND1 DF 577 kb P20 GR	Dual Fusion	FITC	20	ASR Class I
	G110370R	SureFISH 11q13.2 CCND1 DF 577 kb P20 RD		Cy3	20	
CCND3	G110379R	SureFISH 6p21.1 CCND3 DF 678 kb P20 RD	Dual Fusion	Cy3	20	ASR Class I
IGH	G110995G	SureFISH 14q32.33 IGH DF 1519 kb P20 GR		FITC	20	
CDK4	G110978R	SureFISH 12q14.1 CDK4 308 kb P20 RD	Copy Number	Cy3	20	ASR Class I
CEP 12	G110890G	SureFISH Chr12 CEP 704 kb P20 GR		FITC	20	
CDKN2A	G110402G	SureFISH 9p21.3 CDKN2A 351 kb P20 GR	Copy Number	FITC	20	ASR Class I
	G110402R	SureFISH 9p21.3 CDKN2A 351 kb P20 RD		Cy3	20	
	G110973Y	SureFISH 9p21.3 CDKN2A 351 kb P20 GO		Gold	20	
	G110221R	SureFISH 9p21.3 CDKN2A 57 kb P20 RD		Cy3	20	
	G110350R	SureFISH 9p21.3 CDKN2A 188 kb P20 RD		Cy3	20	
	G110975G	SureFISH 9p21.3 CDKN2A 188 kb P20 RD		FITC	20	
CEP 9	G110266R	SureFISH Chr9 CEP 367 kb P20	Copy Number	Cy3	20	ASR Class I
G110869B	SureFISH Chr9 CEP 367 kb P20	Aqua		20		

Target	Part number	Description	Probe type	Fluorochrome	Volume (µL)	Regulatory status
CDKN2C	G110858G	SureFISH 1p32.3 CDKN2C 426 kb P20 GR	Copy Number	FITC	20	ASR Class I
	G110376R	SureFISH 1p32.3 CDKN2C 153 kb P20 RD		Cy3	20	
CKS1B	G110324R	SureFISH 1q21.3 CKS1B 386 kb P20 RD	Dual Fusion	Cy3	20	ASR Class I
	G110324G	SureFISH 1q21.3 CKS1B 386 kb P20 GR		FITC	20	
COL1A1 PDGFB	G110733R G110734G	SureFISH 17q21.33 COL1A1 DF 789 kb P20 RD SureFISH 22q13.1 PDGFB DF 919 kb P20 GR	Dual Fusion	Cy3 FITC	20 20	ASR Class I
D13S25 LAMP1	G110377R G110800G	SureFISH 13q14.3 D13S25 197 kb P20 RD SureFISH 13q34 LAMP1 598 kb P20 GR	Copy Number	Cy3 FITC	20 20	ASR Class I
D20S108 CEP 20	G110247R G110886G	SureFISH D20S108 20q12 200 kb P20 RD SureFISH Chr20 CEP 687 kb P20 GR	Copy Number	Cy3 FITC	20 20	ASR Class I
D5S630 EGR1	G110437G G110249R	SureFISH 5p15.31 D5S630 370 kb P20 GR SureFISH 5q31.2 EGR1 184 kb P20 RD	Copy Number	FITC Cy3	20 20	ASR Class I
D7S486 CEP 7	G110246R G110899G	SureFISH 7q31.2 D7S486 200 kb P20 RD SureFISH Chr7 CEP 767 kb P20 GR	Copy Number	Cy3 FITC	20 20	ASR Class I
DSCR8 RB1	G110285R G110283G	SureFISH 21q22.13 DSCR8 494 kb P20 RD SureFISH 13q14.2 RB1 522 kb P20 GR	Copy Number	Cy3 FITC	20 20	ASR Class I
EGFR CEP 7	G110321R G110899G	SureFISH 7p11.2 EGFR 188 kb P20 RD SureFISH Chr7 CEP 767 kb P20 GR	Copy Number	Cy3 FITC	20 20	ASR Class I
ETV6 RUNX1	G110229R G110230G	SureFISH 12p13.2 ETV6 DF 505 kb P20 RD SureFISH 21q22.12 RUNX1 DF 672 kb P20 GR	Dual Fusion	Cy3 FITC	20 20	ASR Class I
EWSR1 FLI1	G110463G G110464R	SureFISH 22q12.2 EWSR1 DF 740 kb P20 GR SureFISH 11q24.3 FLI1 DF 770 kb P20 RD	Dual Fusion	FITC Cy3	20 20	ASR Class I
FGFR1 CEP 8	G110397R G110834G	SureFISH 8p11 FGFR1 325 kb P20 RD SureFISH Chr8 CEP 635 kb P20 GR	Copy Number	Cy3 FITC	20 20	ASR Class I
FGFR2 CEP 10	G110981R G110884G	SureFISH 10q26 FGFR2 360 kb P20 RD SureFISH Chr10 CEP 676 kb P20 GR	Copy Number	Cy3 FITC	20 20	ASR Class I
FGFR3 IGH	G110301R G110995G	SureFISH 4p16.3 FGFR3 DF 623 kb P20 RD SureFISH 14q32.33 IGH DF 1519 kb P20 GR	Dual Fusion	Cy3 FITC	20 20	ASR Class I
HER2 CEP 17 RAI1 HER2 CEP 17 RAI1	G110969G G110972B G110384R G110390R G110972B G110384G	SureFISH 17q12 HER2 191 kb P20 GR SureFISH Chr17 CEP 436 kb P20 BL SureFISH 17p11.2 RAI1 263 kb P20 RD SureFISH 17q12 HER2 191 kb P20 RD SureFISH Chr17 CEP 436 kb P20 BL SureFISH 17p11.2 RAI1 263 kb P20 GR	Copy Number	FITC Aqua Cy3 Cy3 Aqua FITC	20 20 20 20 20 20	ASR Class I
HEY1 NCOA2	G110288G G110287R	SureFISH 8q21.13 HEY1 DF 774 kb P20 GR SureFISH 8q13.3 NCOA2 DF 700 kb P20 RD	Dual Fusion	FITC Cy3	20 20	ASR Class I
IGH	G110995G	SureFISH 14q32.33 IGH DF 1519 kb P20 GR	Dual Fusion	FITC	20	ASR Class I
IGK IGL MYC	G110415G G110416G G110414R	SureFISH 2p11.2 IGK DF 1966 kb P20 GR SureFISH 22q11.22 IGL DF 1776 kb P20 GR SureFISH 8q24.21 MYC DF 2726 kb P20 RD	Dual Fusion	FITC FITC Cy3	20 20 20	ASR Class I
IKZF1	G110220R G110398R G110302R	SureFISH 7p12.2 IKZF1 62 kb P20 RD SureFISH 7p12.2 IKZF1 128 kb P20 RD SureFISH 7p12.2 IKZF1 50 kb P20 RD	Copy Number	Cy3 Cy3 Cy3	20 20 20	ASR Class I
	CEP 7	G110899G		SureFISH Chr7 CEP 767 kb P20 GR	FITC	
KRAS CEP 12	G110372R G110890G	SureFISH 12p12.1 KRAS 354 kb P20 RD SureFISH Chr12 CEP 704 kb P20 GR	Copy Number	Cy3 FITC	20 20	ASR Class I
MAF IGH	G110380R G110388R G110995G	SureFISH 16q23.2 MAF DF 850 kb P20 RD SureFISH 16q23.2 MAF DF 604 kb P20 RD SureFISH 14q32.33 IGH DF 1519 kb P20 GR	Dual Fusion	Cy3 Cy3 FITC	20 20 20	ASR Class I
MAFB IGH	G110378R G110995G	SureFISH 20q12 MAFB DF 803 kb P20 RD SureFISH 14q32.33 IGH DF 1519 kb P20 GR	Dual Fusion	Cy3 FITC	20 20	ASR Class I
MAML2 CRTC1	G110478R G110479G	SureFISH 11q21 MAML2 DF 496 kb P20 RD SureFISH 19p13.11 CRTC1 DF 500 kb P20 GR	Dual Fusion	Cy3 FITC	20 20	ASR Class I
MDM2 CEP 12	G110393R G110890G	SureFISH 12q15 MDM2 180 kb P20 RD SureFISH Chr12 CEP 704 kb P20 GR	Copy Number	Cy3 FITC	20 20	ASR Class I

Target	Part number	Description	Probe type	Fluorochrome	Volume (µL)	Regulatory status
MECOM RPN1	G110451G	SureFISH 3q26.2 MECOM DF 1209 kb P20 GR	Dual Fusion	FITC	20	ASR Class I
	G110382R	SureFISH 3q21.3 RPN1 DF 558 kb P20 RD		Cy3	20	
MET CEP 7	G110994R	SureFISH 7q31.2 MET 400 kb P20 RD	Copy Number	Cy3	20	ASR Class I
	G110899G	SureFISH Chr7 CEP 767 kb P20 GR		FITC	20	
MORN- TNRSF14	G110753G	SureFISH 1p36 MORN1-TNFRSF14 297 kb P20 GR	Copy Number	FITC	20	ASR Class I
	G110753R	SureFISH 1p36 MORN1-TNFRSF14 297 kb P20 RD		Cy3	20	
CEP 1	G110831G	SureFISH Chr1 CEP 541 kb P20 GR	Copy Number	FITC	20	ASR Class I
	G110261R	SureFISH Chr1 CEP 541 kb P20 RD		Cy3	20	
MYB CEP 6 SEC63	G110426R	SureFISH 6q23 MYB 251 kb P20 RD	Copy Number	Cy3	20	ASR Class I
	G110899G	SureFISH Chr6 CEP 706 kb P20 GR		FITC	20	
	G110449G	SureFISH 6q21 SEC63 241 kb P20 GR		FITC	20	
MYB NFIB	G110465R	SureFISH 6q23.3 MYB DF 500 kb P20 RD	Dual Fusion	Cy3	20	ASR Class I
	G110466G	SureFISH 9p23 NFIB DF 500 kb P20 GR		FITC	20	
MYC CEP 8	G110365R	SureFISH 8q24.21 MYC 294 kb P20 RD	Copy Number	Cy3	20	ASR Class I
	G110834G	SureFISH Chr8 CEP 635 kb P20 GR		FITC	20	
MYC	G110396R	SureFISH 8q24.21 MYC DF 815 kb P20 RD	Dual Fusion	Cy3	20	ASR Class I
	G110970B	SureFISH 8q24.21 MYC DF 815 kb P20 BL		Aqua	20	
IGH	G110995G	SureFISH 14q32.33 IGH DF 1519 kb P20 GR	Dual Fusion	FITC	20	ASR Class I
MYC BCL6	G110396R	SureFISH 8q24.21 MYC DF 815 kb P20 RD	Dual Fusion	Cy3	20	ASR Class I
	G110462G	SureFISH 3q27.3 BCL6 DF 785 kb P20 GR		FITC	20	
MYCN CEP 2	G110751R	SureFISH 2p24.3 MYCN 277 kb P20 RD	Copy Number	Cy3	20	ASR Class I
	G110889G	SureFISH Chr2 CEP 448 kb P20 GR		FITC	20	
NF1 CEP 17	G110434G	SureFISH 17q11.2 NF1 332 kb P20 GR	Copy Number	FITC	20	ASR Class I
	G110291R	SureFISH Chr17 CEP 436 kb P20 RD		Cy3	20	
NF2 CEP 22	G110756G	SureFISH 22q12.2 NF2 119 kb P20 GR	Copy Number	FITC	20	ASR Class I
	G110279R	SureFISH Chr22 CEP 668 kb P20 RD		Cy3	20	
NPHP1 CEP 2	G110742R	SureFISH 2q13 NPHP1 124 kb P20 RD	Copy Number	Cy3	20	ASR Class I
	G110889G	SureFISH Chr2 CEP 448 kb P20 GR		FITC	20	
CEP 5	G110867G	SureFISH Chr5 CEP 633 kb P20 GR	Copy Number	FITC	20	ASR Class I
PAX5 CEP 9	G110341R	SureFISH 9p13.2 PAX5 741 kb P20 RD	Copy Number	Cy3	20	ASR Class I
	G110975G	SureFISH Chr9 CEP 367 kb P20 GR		FITC	20	
PAX8 PPARG	G110467R	SureFISH 2q13 PAX8 DF 326 kb P20 RD	Dual Fusion	Cy3	20	ASR Class I
	G110468G	SureFISH 3p25.2 PPARG DF 326 kb P20 GR		FITC	20	
PBX1 TCF3	G110292R	SureFISH 1q23.3 PBX1 DF 603 kb P20 RD	Dual Fusion	Cy3	20	ASR Class I
	G110293G	SureFISH 19p13.3 TCF3 DF 729 kb P20 GR		FITC	20	
PDGFRA CEP 4	G110740R	SureFISH 4q12 PDGFRA-CN 155 kb P20 RD	Copy Number	Cy3	20	ASR Class I
	G110866G	SureFISH Chr4 CEP 613 kb P20 GR		FITC	20	
PMP22 CEP 17	G110342R	SureFISH 17p12 PMP22 458 kb P20 RD	Copy Number	Cy3	20	ASR Class I
	G110993G	SureFISH Chr17 CEP 436 kb P20 GR		FITC	20	
PRCC CEP 1	G110436G-8	SureFISH 1q23.1 PRCC 451 kb P20 GR	Copy Number	FITC	20	ASR Class I
	G110261R-8	SureFISH Chr1 CEP 541 kb P20 RD		Cy3	20	
PTEN CEP 10	G110202R-8	SureFISH 10q23.31 PTEN 160 kb P20 RD	Copy Number	Cy3	20	ASR Class I
	G110884G-8	SureFISH Chr10 CEP 676 kb P20 GR		FITC	20	
RB1 CEP 13	G110284R	SureFISH 13q14.2 RB1 522 kb P20 RD	Copy Number	Cy3	20	ASR Class I
	G110870G	SureFISH Chr13 CEP 454 kb P20 GR		FITC	20	
RREB1 CEP 6	G110401R	SureFISH 6p25.1 RREB1 638 kb P20 RD	Copy Number	Cy3	20	ASR Class I
	G110868G	SureFISH Chr6 CEP 706 kb P20 GR		FITC	20	

Target	Part number	Description	Probe type	Fluorochrome	Volume (µL)	Regulatory status
RREB1	G110401G	SureFISH 6p25.1 RREB1 638 kb P20 GR	Copy Number	FITC	20	ASR Class I
MYB	G110426X	SureFISH 6q23 MYB 251 kb P20 TR		Texas Red	20	
CEP 6	G110868B	SureFISH Chr6 CEP 706 kb P20 BL		Aqua	20	
RX1T1	G110294R	SureFISH 8q21.3 RUNX1T1 DF 734 kb P20 RD	Dual Fusion	Cy3	20	ASR Class I
RUNX1	G110230G	SureFISH 21q22.12 RUNX1 DF 672 kb P20 GR		FITC	20	
SEC63	G110449G	SureFISH 6q21 SEC63 241 kb P20 GR	Copy Number	FITC	20	ASR Class I
CEP 6	G110265R	SureFISH Chr6 CEP 706 kb P20 RD		Cy3	20	
SMARCB1	G110232R	SureFISH 22q11.23 SMARCB1 98 kb P20 RD	Copy Number	Cy3	20	ASR Class I
CEP 22	G110888G	SureFISH Chr22 CEP 668 kb P20 GR		FITC	20	
TBL1XR1	G110717G	SureFISH 3q26.32 TBL1XR1 DF 846 kb P20 GR	Dual Fusion	FITC	20	ASR Class I
TP63	G110716R	SureFISH 3q28 TP63 DF 760 kb P20 RD		Cy3	20	
TFE3	G110241R	SureFISH Xp11.23 TFE3 523 kb P20 RD	Copy Number	Cy3	20	ASR Class I
CEP X	G110862G	SureFISH ChrX CEP 587 kb P20 GR		FITC	20	
TP53	G110383G	SureFISH 17p13.1 TP53 120 kb P20 GR	Copy Number	FITC	20	ASR Class I
	G110383R	SureFISH 17p13.1 TP53 120 kb P20 RD		Cy3	20	
CEP 17	G110291R	SureFISH Chr17 CEP 436 kb P20 RD		Cy3	20	
	G110993G	SureFISH Chr17 CEP 436 kb P20 GR		FITC	20	
WT1	G110738R	SureFISH 11p13 WT1 89 kb P20 RD	Copy Number	Cy3	20	ASR Class I
CEP 11	G110883G	SureFISH Chr11 CEP 798 kb P20 GR		FITC	20	
YWHAE	G110255R	SureFISH 17p13.3 YWHAE 172 kb P20 RD	Copy number	Cy3	20	ASR Class I
CEP 17	G110993G	SureFISH Chr17 CEP 436 kb P20 GR		FITC	20	

Centromere enumeration probes

Target	Part number	Description	Fluorochrome	Volume (µL)	Regulatory status
CEP 1	G110831G	SureFISH Chr1 CEP 541 kb	FITC	20	ASR Class I
	G110261R		Cy3	20	
	G110864B		Aqua	20	
CEP 2	G110122G	SureFISH Chr2 CEP 448 kb	FITC	100	ASR Class I
	G110889G		FITC	20	
	G110889B		Aqua	20	
CEP 3	G110865G	SureFISH Chr3 CEP 592 kb	FITC	20	ASR Class I
	G110262R		Cy3	20	
	G110143X		Texas Red	100	
	G110974X		Texas Red	20	
CEP 4	G110866G	SureFISH Chr4 CEP 613 kb	FITC	20	ASR Class I
	G110263R		Cy3	20	
	G110866B		Aqua	20	
CEP 5	G110867G	SureFISH Chr5 CEP 633 kb	FITC	20	ASR Class I
	G110264R		Cy3	20	
	G110867B		Aqua	20	

Target	Part number	Description	Fluorochrome	Volume (µL)	Regulatory status
CEP 6	G110868G	SureFISH Chr6 CEP 706 kb	FITC	20	ASR Class I
	G110265R		Cy3	20	
	G110868B		Aqua	20	
CEP 7	G110119G	SureFISH Chr7 CEP 767 kb	FITC	100	ASR Class I
	G110899G		FITC	20	
	G110286R		Cy3	20	
	G110899B		Aqua	20	
CEP 8	G110834G	SureFISH Chr8 CEP 635 kb	FITC	20	ASR Class I
	G110248R		Cy3	20	
	G110834B		Aqua	20	
CEP 9	G110144G	SureFISH Chr9 CEP 367 kb	FITC	100	ASR Class I
	G110975G		FITC	20	
	G110266R		Cy3	20	
	G110869B		Aqua	20	
CEP 10	G110124G	SureFISH Chr10 CEP 676 kb	FITC	100	ASR Class I
	G110884G		FITC	20	
	G110276R		Cy3	20	
	G110884B		Aqua	20	
CEP 11	G110883G	SureFISH Chr11 CEP 798 kb	FITC	20	ASR Class I
	G110275R		Cy3	20	
	G110883B		Aqua	20	
CEP 12	G110109G	SureFISH Chr12 CEP 704 kb	FITC	100	ASR Class I
	G110890G		FITC	20	
	G110281R		Cy3	20	
	G110890B		Aqua	20	
CEP 13	G110870G	SureFISH Chr13 CEP 454 kb	FITC	20	ASR Class I
	G110267R		Cy3	20	
	G110870B		Aqua	20	
CEP 14	G110871G	SureFISH Chr14 CEP 536 kb	FITC	20	ASR Class I
	G110871B		Aqua	20	
CEP 15	G110872G	SureFISH Chr15 CEP 265 kb	FITC	20	ASR Class I
	G110269R		Cy3	20	
	G110872B		Aqua	20	
CEP 16	G110873G	SureFISH Chr16 CEP 671 kb	FITC	20	ASR Class I
	G110270R		Cy3	20	
CEP 17	G110105G	SureFISH Chr17 CEP 436 kb	FITC	100	ASR Class I
	G110993G		FITC	20	
	G110291R		Cy3	20	
	G110972B		Aqua	20	
	G110141B		Aqua	100	
CEP 18	G110874G	SureFISH Chr18 CEP 711 kb	FITC	20	ASR Class I
	G110874B		Aqua	20	
CEP 19	G110875G	SureFISH Chr19 CEP 527 kb	FITC	20	ASR Class I
CEP 20	G110886G	SureFISH Chr20 CEP 687 kb	FITC	20	ASR Class I
CEP 21	G110887G	SureFISH Chr21 CEP 653 kb	FITC	20	ASR Class I
	G110278R		Cy3	20	
	G110887B		Aqua	20	
CEP 22	G110888G	SureFISH Chr22 CEP 668 kb	FITC	20	ASR Class I
	G110279R		Cy3	20	
	G110888B		Aqua	20	

Target	Part number	Description	Fluorochrome	Volume (µL)	Regulatory status
CEP X	G110862G	SureFISH ChrX CEP 587 kb	FITC	20	ASR Class I
	G110259R		Cy3	20	
	G110862B		Aqua	20	
CEP Y	G110863G	SureFISH ChrY CEP 273 kb	FITC	20	ASR Class I
	G110260R		Cy3	20	
	G110863B		Aqua	20	

SureFISH concentrated high volume probes (100 µL)

Target	Part number	Description	Probe type	Fluorochrome	Volume (µL)	Regulatory status
Chr 1p/19q	G110101G	SureFISH 19p13.2 ZNF443 513 kb P100 GR	Copy Number	FITC	100	ASR Class I
	G110103R	SureFISH 19q13.33 GLTSCR2 298 kb P100 RD		Cy3	100	
	G110100G	SureFISH 1q25.2 ABL2 600 kb P100 GR		FITC	100	
	G110102R	SureFISH 1p36.32 TPRG1L 332 kb P100 RD		Cy3	100	
BRAF	G110113G	SureFISH 7q34 BRAF 5' BA 510 kb P100 GR	Break Apart	FITC	100	ASR Class I
	G110112R	SureFISH 7q34 BRAF 3' BA 414 kb P100 RD		Cy3	100	
CDKN2A	G110142Y	SureFISH 9p21.3 CDKN2A 351 kb P100 GO	Copy Number	Gold	100	ASR Class I
CEP17	G110141B	SureFISH Chr17 CEP 436 kb P100 BL		Aqua	100	
CEP3	G110143X	SureFISH Chr3 CEP 592 kb P100 TR		Texas Red	100	
CEP7	G110119G	SureFISH Ch7 CEP 767 kb P100 GR		FITC	100	
CDK4 CEP 12	G110145R	SureFISH 12q14.1 CDK4 308 kb P100 RD	Copy Number	Cy3	100	ASR Class I
	G110109G	SureFISH Chr12 CEP 704 kb P100 GR		FITC	100	
DDIT3	G110114G	SureFISH 12q13 DDIT3 3' BA 537 kb P100 GR	Break Apart	FITC	100	ASR Class I
	G110115R	SureFISH 12q14 DDIT3 5' BA 498 kb P100 RD		Cy3	100	
DUSP22-IRF4	G110132G	SureFISH 6p25.3 DUSP22-IRF4 3' BA 235 kb P100 GR	Break Apart	FITC	100	ASR Class I
	G110131R	SureFISH 6p25.3 DUSP22-IRF4 5' BA 48 kb P100 RD		Cy3	100	
EWSR1	G110107G	SureFISH 22q12.2 EWSR1 5' BA 564 kb P100 GR	Break Apart	FITC	100	ASR Class I
	G110106R	SureFISH 22q12.2 EWSR1 3' BA 263 kb P100 RD		Cy3	100	
EGFR CEP 7	G110120R	SureFISH 7p11.2 EGFR 188 kb P100 RD	Copy Number	Cy3	100	ASR Class I
	G110119G	SureFISH Chr7 CEP 767 kb P100 GR		FITC	100	
FGFR2 CEP 10	G110146R	SureFISH 10q26 FGFR2 360 kb P100 RD	Copy Number	Cy3	100	ASR Class I
	G110124G	SureFISH Chr10 CEP 676 kb P100 GR		FITC	100	
FOXO1	G110116G	SureFISH 13q14.11 FOXO1 3' BA 600 kb P100 GR	Break Apart	FITC	100	ASR Class I
	G110117R	SureFISH 13q14.11 FOXO1 5' BA 601 kb P100 RD		Cy3	100	
FUS	G110133G	SureFISH 16p11.2 FUS 5' BA 457 kb P100 GR	Break Apart	FITC	100	ASR Class I
	G110134R	SureFISH 16p11.2 FUS 3' BA 365 kb P100 RD		Cy3	100	
HER2 CEP 17	G110104R	SureFISH 17q12 HER2 191 kb P100 RD	Copy Number	Cy3	100	ASR Class I
	G110105G	SureFISH Chr17 CEP 436 kb P100 GR		FITC	100	
IGH MAF	G110147G	SureFISH 14q32.33 IGH DF 1519 kb P100 GR	Dual Fusion	FITC	100	ASR Class I
	G110138R	SureFISH 16q23.2 MAF DF 604 kb P100 RD		Cy3	100	
MAML2	G110154G	SureFISH 11q21 MAML2 3' BA 399 kb P100 GR	Break Apart	FITC	100	ASR Class I
	G110155R	SureFISH 11q21 MAML2 5' BA 264 kb P100 RD		Cy3	100	
MDM2 CEP 12	G110108R	SureFISH 12q15 MDM2 180 kb P100 RD	Copy Number	Cy3	100	ASR Class I
	G110109G	SureFISH Chr12 CEP 704 kb P100 GR		FITC	100	
MET CEP7	G110118R	SureFISH 7q31.2 MET 400 kb P100 RD	Copy Number	Cy3	100	ASR Class I
	G110119G	SureFISH Chr7 CEP 767 kb P100 GR		FITC	100	
MYB	G110150R	SureFISH 6q23.3 MYB 5' BA 400 kb P100 RD	Break Apart	Cy3	100	ASR Class I
	G110151G	SureFISH 6q23.3 MYB 3' BA 394 kb P100 GR		FITC	100	

Target	Part number	Description	Probe type	Fluorochrome	Volume (µL)	Regulatory status
MYCN	G110121R	SureFISH 2p24.3 MYCN 277 kb P100 RD	Copy Number	Cy3	100	ASR Class I
CEP2	G110122G	SureFISH Chr2 CEP 448 kb P100 GR		FITC	100	
NTRK1	G110125G	SureFISH 1q21 NTRK1 5' BA 478 kb P100 GR	Break Apart	FITC	100	ASR Class I
	G110126R	SureFISH 1q21 NTRK1 3' BA 380 kb P100 RD		Cy3	100	
NTRK2	G110128G	SureFISH 9q21.33 NTRK2 5' BA 406 kb P100 GR	Break Apart	FITC	100	ASR Class I
	G110127R	SureFISH 9q21.33 NTRK2 3' BA 445 kb P100 RD		Cy3	100	
NTRK3	G110130G	SureFISH 15q25.3 NTRK3 5' BA 481 kb P100 GR	Break Apart	FITC	100	ASR Class I
	G110129R	SureFISH 15q25.3 NTRK3 3' BA 435 kb P100 RD		Cy3	100	
PLAG1	G110152R	SureFISH 8q12.1 PLAG1 3' BA 400 kb P100 RD	Break Apart	Cy3	100	ASR Class I
	G110153G	SureFISH 8q12.1 PLAG1 5' BA 400 kb P100 GR		FITC	100	
PDGFB	G110157G	SureFISH 22q13.1 PDGFB DF 919 kb P100 GR	Dual Fusion	FITC	100	ASR Class I
	COL1A1	G110156R		SureFISH 17q21.33 COL1A1 DF 789 kb P100 RD	Cy3	
PTEN	G110123R	SureFISH 10q23.31 PTEN 160 kb P100 RD	Copy Number	Cy3	100	ASR Class I
	CEP 10	G110124G		SureFISH Chr10 CEP 676 kb P100 GR	FITC	
SS18 (SYT)	G110110G	SureFISH 18q11.2 SS18 3' BA 616 kb P100 GR	Break Apart	FITC	100	ASR Class I
	G110111R	SureFISH 18q11.2 SS18 5' BA 406 kb P100 RD		Cy3	100	
TFE3	G110148R	SureFISH Xp11.23 TFE3 5' BA 237 kb P100 RD	Break Apart	Cy3	100	ASR Class I
	G110149G	SureFISH Xp11.23 TFE3 3' BA 540 kb P100 GR		FITC	100	

SureFISH concentrated high volume paired probes (200 µL)

Target	Part number	Description	Probe type	Fluorochrome	Volume (µL)	Regulatory status
ALK	G111900	SureFISH ALK BA P200	Break Apart	Cy3/FITC	200	ASR Class I
ROS1	G111901	SureFISH ROS1 BA P200	Break Apart	Cy3/FITC	200	ASR Class I
RET	G111902	SureFISH RET BA P200	Break Apart	Cy3/FITC	200	ASR Class I
MYC	G111923	SureFISH MYC BA P200	Break Apart	Cy3/FITC	200	ASR Class I
BCL2	G111924	SureFISH BCL2 BA P200	Break Apart	Cy3/FITC	200	ASR Class I
BCL6	G111925	SureFISH BCL6 BA P200	Break Apart	Cy3/FITC	200	ASR Class I
CCND1	G111926	SureFISH CCND1 BA P200	Break Apart	Cy3/FITC	200	ASR Class I
IGH	G111928	SureFISH IGH BA P200	Break Apart	Cy3/FITC	200	ASR Class I
IGH/BCL2	G111930	SureFISH IGH BCL2 DF P200	Dual Fusion	Cy3/FITC	200	ASR Class I
IGH/CCND1	G111931	SureFISH IGH CCND1 DF P200	Dual Fusion	Cy3/FITC	200	ASR Class I
IGH/MYC	G111929	SureFISH IGH MYC DF P200	Dual Fusion	Cy3/FITC	200	ASR Class I
MALT1	G111927	SureFISH MALT1 BA P200	Break Apart	Cy3/FITC	200	ASR Class I
28S	G111922	28S rRNA CISH probe	Copy Number	CISH probe	200	ASR Class I
EBER	G111921	EBER RNA CISH Probe	Copy Number	CISH probe	200	ASR Class I
KAPPA	G111919	Kappa mRNA CISH Probe	Copy Number	CISH probe	200	ASR Class I
LAMBDA	G111920	Lambda mRNA CISH Probe	Copy Number	CISH probe	200	ASR Class I

SureFISH probes: Analyte Specific Reagent. Analytical and performance characteristics are not established.

Custom probes for human (std) and nonhuman (sml) targets

Std: for human genome probe designs, includes QC testing.

Sml: for mouse genome probes designs, QC testing not included.

	Part number	Product	Kit Size	Regulatory status
Human target design (QC)	G110997B	FISH custom probe std 20rxn BL	20 tests	RUO
	G110997G	FISH custom probe std 20rxn GR	20 tests	RUO
	G110997R	FISH custom probe std 20rxn RD	20 tests	RUO
	G110997X	FISH custom probe std 20rxn TR	20 tests	RUO
	G110997Y	FISH custom probe std 20rxn GO	20 tests	RUO
Mouse target design (No QC)	G110999B	FISH custom probe sml 20rxn BL	20 tests	RUO
	G110999G	FISH custom probe sml 20rxn GR	20 tests	RUO
	G110999R	FISH custom probe sml 20rxn RD	20 tests	RUO
	G110999X	FISH custom probe sml 20rxn TR	20 tests	RUO
	G110999Y	FISH custom probe sml 20rxn GO	20 tests	RUO

Custom probes are for Research Use Only. Not for use in diagnostic procedures.

FISH Accessories

Manual ISH accessories

Part number	Description	Size	Regulatory status
G9400A	FISH Hybridization Buffer Cytology (overnight)	100 µL	Laboratory Use
G9410A	FISH Hybridization Buffer FFPE (overnight)	100 µL	Laboratory Use
G9401A	FISH Wash Buffer 1	500 mL	Laboratory Use
G9402A	FISH Wash Buffer 2	500 mL	Laboratory Use
G9403A	FISH Mounting Buffer without DAPI	100 µL	Laboratory Use
G9404A	FISH Mounting Buffer	100 µL	Laboratory Use
G9411A	ISH Pepsin Kit	50 slides	Laboratory Use
G9415A	IQFISH Fast Hybridization Buffer 200 µL	200 µL	Laboratory Use
G9416A	IQFISH Fast Hybridization Buffer 200 µL x 6	200 µL x 6	Laboratory Use

Automated ISH accessories

Part number	Description	Size	Regulatory status
G9414A	IQFISH Fast Hybridization Buffer	900 µL	Laboratory Use
GC20630-7	Dako Omnis Vial with Mixing Ball, 2 mL*	Box of 25	Laboratory Use

Fluorochromes used in SureFISH assays

Color	Excitation Range (nm)	Emission Range (nm)
Texas Red (Red)	545-585	610-680
Cy3 (Orange-red)	532-565	580-640
Gold (Yellow)	520-545	555-585
FITC (Green)	450-490	500-650
Aqua (Blue)	430-450	465-505

Fluorochromes used in *HER2* IQFISH pharmDx assays

Color	Excitation Peak (nm)	Emission Peak (nm)
FITC (Green)	495	520
Texas Red (Red)	596	615

SureFISH Probes Scientific Publications

- Takeda, M.; Kasai, T.; Shimizu, S.; Kitaichi, M.; Kojima, K.; Nagoya, A.; Hayashi, A.; Utsumi, T.; Yoon, H.-E.; Matsumura, A.; Atagi, S. Assessment of Alk Gene Rearrangement in Lung Cancer Using a New Rapid Automated SureFISH (Dako Omnis) Assay. *Journal of Clinical Pathology* **2017**, 70 (8), 712–714.
- Viale, G.; Paterson, J.; Bloch, M.; Csathy, G.; Allen, D.; Dell’Orto, P.; Kjærsgaard, G.; Levy, Y. Y.; Jørgensen, J. T. Assessment of HER2 Amplification Status in Breast Cancer Using a New Automated *HER2* IQFISH pharmDx (Dako Omnis) Assay. *Pathology - Research and Practice* **2016**, 212 (8), 735–742.
- Viale, G.; Paterson, J.; Bloch, M.; Csathy, G.; Allen, D.; Dell’Orto, P.; Kjærsgaard, G.; Levy, Y. Y.; Jørgensen, J. T. Analysis of HER2 status in gastroesophageal tumor specimens using a new automated *HER2* IQFISH pharmDx (Dako Omnis) assay. *Histology and histopathology* **2016**, 31 (12), 1327-1335.

www.agilent.com

D75975_3.00

Analyte Specific Reagent. Analytical and performance characteristics are not established.

This information is subject to change without notice.

© Agilent Technologies, Inc. 2022, 2023, 2025-2026
Published in the USA, May 20, 2026
00034 2026MAY20

