

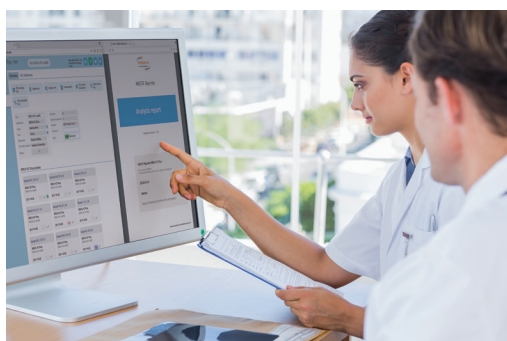
SureMASTR: Amplicon-Based Oncology Solutions

Sequence the genes that matter
For U.S. and Canada



Next-Generation Sequencing. Focus on the Genes that Matter.

Agilent offers a comprehensive range of amplicon-based oncology solutions, from cancer predisposition to molecular pathology assays. All SureMASTR assays focus on the genes that are relevant and include actionable mutations. The unique amplicon amplification PCR technique of the SureMASTR assays increases the reliability of your routine testing. Using a targeted gene assay increases the efficiency of your workflow by allowing you to perform more samples per run. The simple-to-follow protocols for different NGS systems reduce the time and effort to process the samples and enables your laboratory to perform oncology testing on a large scale.



Oncology

Germline & Somatic assays
for analysis of various
cancer-related genes.

SureMASTR assays for oncology products

Agilent's wide range of SureMASTR catalogue oncology solutions are built on years of expertise and cover both cancer predisposition assays for human genetics (germline) and molecular tumor pathology assays for oncogenetics (somatic).

- **Uniform coverage and high target specificity:** helping you to optimize the efficiency of your sequencer capacity, saving time and costs.
- **Minimal DNA input as low as 4 ng per PCR reaction:** providing accurate results even when handling difficult samples.
- **Continuous support and simple workflow:** guiding your laboratory towards reliable results every step of the way. Easy implementation of the SureMASTR assays.

Quality control for FFPE samples

Check the DNA quality of your FFPE samples prior to your NGS run with the QC Plex. The QC Plex provides you not only with information on the amount of DNA present, but also on the DNA integrity and information regarding the absence of PCR inhibitors. This in combination with the simple-to-follow protocol ensures cost and time efficiency for your lab.

Data analysis for SureMASTR assays

MASTR Reporter is the trusted analysis solution for SureMASTR assays on Illumina NGS Systems. It enables optimized, automated variant calling of SNVs and CNVs including quality control of the entire workflow.

Expert support team

Agilent offers your lab a wide range of support tools from the initial set-up and day-to-day management to the continuous improvement of your operations. Agilent trains your collaborators and does not stop until everything is running smoothly. We can also help you select the right equipment and optimize your workflow and experts are always at your disposition. Furthermore, the online tools help you calculate the number of samples to be pooled per run and assess your FFPE-derived DNA quality. Agilent guides your lab towards reliable results. Every step of the way.

Oncology SureMASTR assays

	Product Name	Genomic Target	Related Cancer
Cancer Predisposition	SureMASTR BRCA Screen	<i>BRCA1, BRCA2, CHEK2, PALB2</i>	Breast & Ovarian
	SureMASTR HRR	<i>ATM, BARD1, BRCA1, BRCA2, BRIP1, CDK12, CHEK1, CHEK2, FANCA, FANCL, NBN, PALB2, RAD51B, RAD51C, RAD51D, RAD54L, TP53</i>	Breast & Ovarian
	SureMASTR Hereditary Cancer	<i>BRCA1, BRCA2, STK11, TP53, PTEN, BLM, CDH1, CHEK2, MLH1, MSH2, MSH6, ATM, BARD1, NBN, PALB2, PMS2, RAD50, RAD51C, RAD51D, BRIP1, MRE11A, XRCC2, MUTYH, MEN1, EPCAM, and FAM175A</i>	Pan
	FAP MASTR	<i>APC and MUTYH</i>	Colorectal
	HNPCC MASTR Plus	<i>MLH1, MSH2, MSH6, PMS2, and 3' UTR EPCAM</i>	Colorectal
Molecular Tumor Pathology	SureMASTR Tumor Hotspot	frequently mutated regions in <i>AKT, ALK, BRAF, CDKN2A (p16-INK4A, p14-ARF), CTNNB1 (β-catenin), DDR2, EGFR, ERBB2 (HER2), ERBB4, FGFR2, FGFR3, H3F3A (Histone H3, F3A), HIST1H3B (HistoneH1, 3B), HRAS, IDH1, IDH2, KIT, KRAS, MEK1 (MAP2K1), MET, NRAS, PDGFRA, PIK3R1, PIK3CA, PTEN, and STK11 (LKB1)</i>	Pan
	SureMASTR BRCA Screen	<i>BRCA1, BRCA2, CHEK2, PALB2</i>	Breast & Ovarian
	SureMASTR HRR	<i>ATM, BARD1, BRCA1, BRCA2, BRIP1, CDK12, CHEK1, CHEK2, FANCA, FANCL, NBN, PALB2, RAD51B, RAD51C, RAD51D, RAD54L, TP53</i>	Breast & Ovarian
	SureMASTR TP53	<i>TP53</i>	Pan
	GIST MASTR	<i>KIT exon 9, 11, 13-17 and PDGFRA exon 8, 10, 12, 14, 18</i>	Intestinal
	CLL MASTR Plus	<i>TP53, BIRC3, NOTCH1, SF3B1, MYD88, FBXW7, ATM, POT1, and XPO1</i>	Leukemia
DNA Quality Control	QC Plex	DNA-QC multiplex for FFPE-derived DNA	Breast & Ovarian

MASTR Reporter is available for following SureMASTR assays

- SureMASTR Tumor Hotspot
- SureMASTR Hereditary Cancer
- SureMASTR BRCA Screen
- SureMASTR TP53
- FAP MASTR
- HNPCC MASTR Plus
- SureMASTR HRR

Learn more:

www.agilent.com

U.S. and Canada

ngs.support@agilent.com

For Research Use Only. Not for use in diagnostic procedures.

PR7000-2100

© Agilent Technologies, Inc. 2020

Published in the USA, March 15, 2020

5991-9291ENUC

