

# Agilent LT Leak Finder

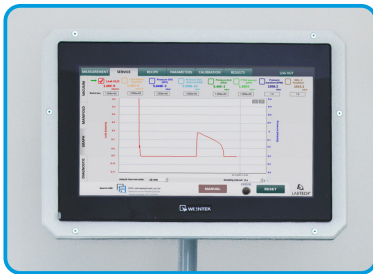
All-in-one evacuation, pressurization and sniffing leak-test station



# Why LT Leak Finder

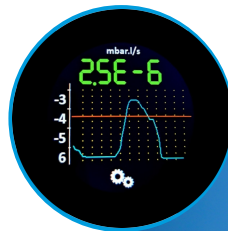


- Ready-to-use, configurable sniffing station powered by Agilent VS C15 helium leak detector for a wide range of industrial applications
- Fast, accurate leak localization and measurement for dependable product quality
- Optimized vacuum design to prevent contamination and reduce helium background noise
- Controlled by a PLC with an HMI featuring real-time visualization of test progress
- Compact and mobile architecture for easy sniffing test wherever you need it



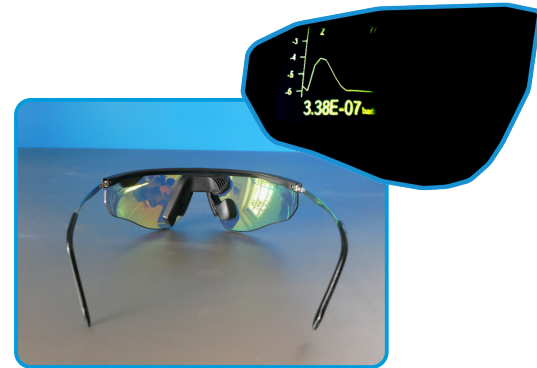
HMI:

15" Human-Machine Interface (HMI) touch panel for easy visualization and control



Smart probe:

Integrated display for instant feedback, with vibration indication when limits are exceeded



Smart eyewear:

Real-time data overlays that bring critical information directly into the field of view



A centralized visual control panel providing real-time system status, control, and alarms at a glance, enabling intuitive operation of the leak-test station.



Configurable pumping system using Agilent single-stage rotary vane pumps (45–100 m<sup>3</sup>/h), integrated with pressure measurement.



Advanced detection system featuring the Agilent C15 Leak Detector with internal calibrated leak for precise and reliable detection.



Rapid pressurization and gas removal via a flexible hose with quick coupling for fast, secure connections.



Multiple valve control modes for adjustable helium pressurization: unregulated or controlled by proportional valve.



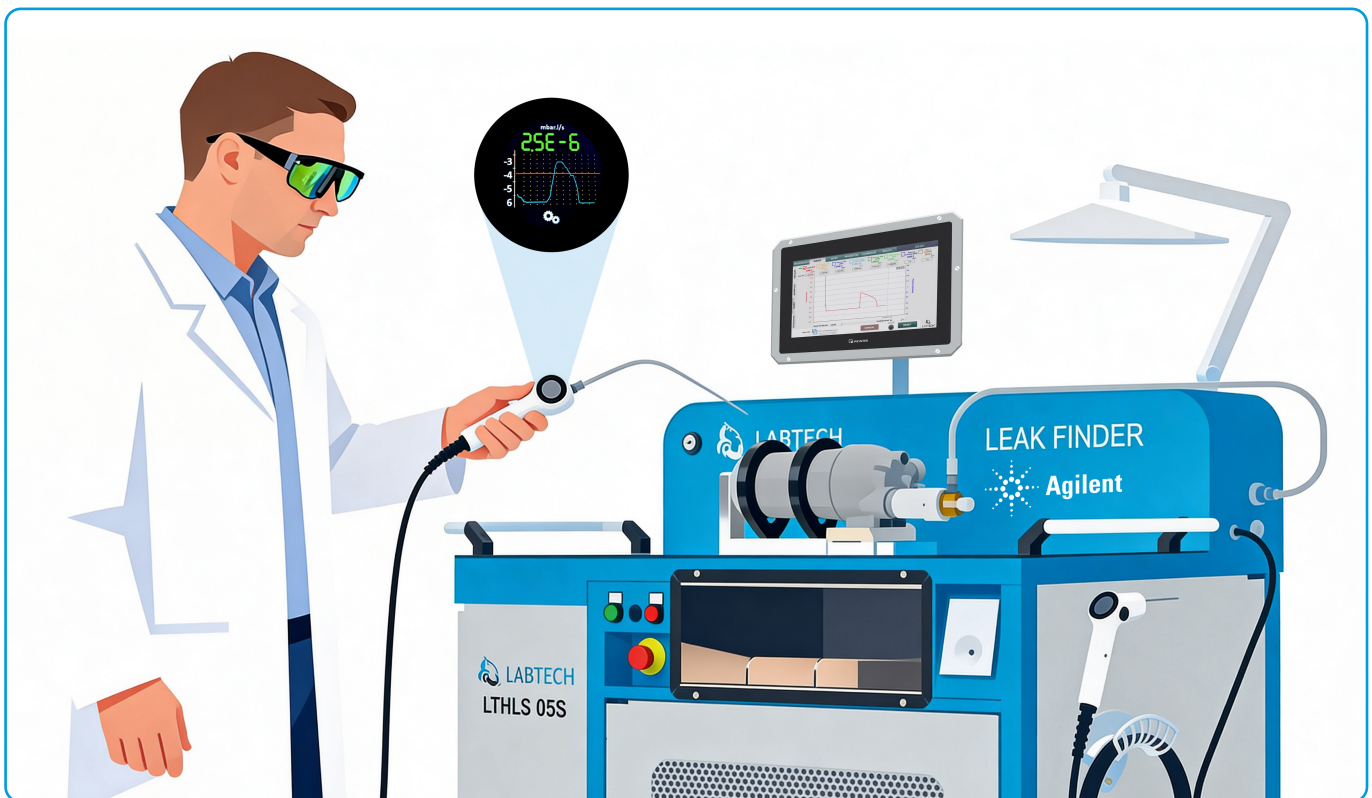
Optional connection to a helium recovery unit for significant operational cost savings or connection to pressurized air/N<sub>2</sub> with simple pressure decay test.

# How To Operate LT Leak Finder

- **Test sample connection:** Connect your test product to the LT Leak Finder—without size limitations—using a flexible hose and quick coupler.
- **Gas roughing:** The system automatically removes residual gases from the tested product by pumping down to a preset pressure.
- **Pressurization:** LT Leak Finder pressurizes the product with helium to the specified level by proportional valve.
- **Sniffing test:** The operator is guided via the HMI to use the sniffing probe for leak detection and localization.
- **Leak identification:** Alerts are displayed on the HMI and probe, reinforced by vibration and acoustic signals.

You can choose between a standard probe, a smart probe with integrated display, or augmented reality glasses for real-time feedback.

- **Final stage:** After testing, helium is automatically vented or recovered for reuse in case of connection to helium recovery unit.



# Where LD Leak Finder fits

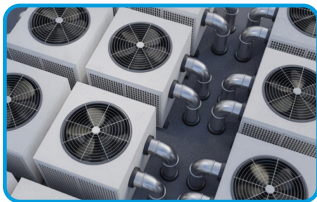


## Automotive

Sniffing complements NOK (Not OK) testing by enabling accurate leak localization on parts requiring repair, including fuel rails and tanks, battery packs and trays, transmission housings, airbag inflators, brake lines and fluid reservoirs, and fuel cells.

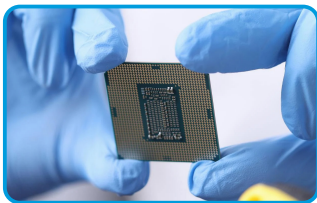


Agilent  
eMobility brochure 



## HVAC/Refrigeration

A/C systems, heat pumps, heat exchangers, compressors, evaporators, refrigerated transport, industrial chillers, etc.



## Semiconductors

Offline testing of vacuum chambers, load locks, process tools, gas delivery systems, and semiconductor packaging components.

## Key specifications

Max Sensitivity	1x10 <sup>-7</sup> mbar.l/s
Max He Testing Pressure	40 bar*
Tested Part Base Pressure	1 mbar
Voltage:	3NPE ~ 50Hz, 400V/TN-S
Dimensions: (D x W x H)	1200 x 760 x 1200 mm

\* With regard to safety

# Configurable options

- **Pumping:**
  - 42 / 50 / 67 / 100 m<sup>3</sup>/h configurable monostage rotary vane pumps with pressure measurement
  - MS101 Rotary Vane Pump – standard
- **Probes:**
  - Standard (LED + vibration)
  - Smart probe (integrated display)
  - Optional Augmented Reality overlay
- **Gas management optional:**
  - Connection to Helium Recovery Unit
  - Connection to pressurized air/N<sub>2</sub> with simple pressure decay test


# Agilent stand-alone leak detection solutions

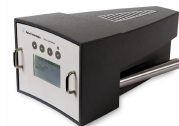
- State-of-the-art helium detectors for accurate and fast leak measurement
- Wet or dry pumping configurations
- Mass spec and permeable membrane technologies
- Ease of use, stable, and repeatable measurement



HLD Stand alone 



Multi-Gas Sniffer 

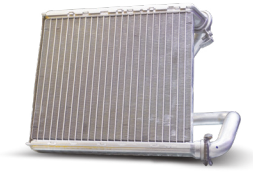


Portable PHD-4 

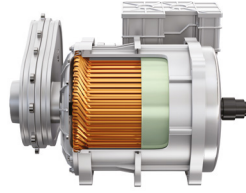



C15 for integration 

Learn more:




Heat Exchanger  
Leak Station 



Electric Motor  
Leak Station 



Coating System 



Leak Test of  
Battery Housing 



Agilent Leak Detection Solutions:

[www.agilent.com/en/product/vacuum-technologies/helium-leak-detectors](http://www.agilent.com/en/product/vacuum-technologies/helium-leak-detectors)

For leak detection educational information:

[www.agilent.com/en/product/vacuum-technologies/helium-leak-detection](http://www.agilent.com/en/product/vacuum-technologies/helium-leak-detection)

Get answers to your technical questions and  
access resources in the Agilent Community:

[community.agilent.com/community/technical/vacuum](http://community.agilent.com/community/technical/vacuum)

Agilent's Online Store:

[www.agilent.com/chem/store](http://www.agilent.com/chem/store)



LT Leak Finder Info and images courtesy of:  
LABTECH s.r.o.  
[info@labtech.eu](mailto:info@labtech.eu)

## Contact an Agilent Vacuum Expert:

### U.S.

Toll-Free: **1-800-227-9770**

[vpl-customer@agilent.com](mailto:vpl-customer@agilent.com)

### Europe and other countries

Toll-Free: **00800 234 234 00**

[vpt-customer@agilent.com](mailto:vpt-customer@agilent.com)

### China

Landline phone: **800 06 778**

Mobile Phone: **400 06 778**

[contacts.vacuum@agilent.com](mailto:contacts.vacuum@agilent.com)

DE-014809

This information is subject to change without notice.

© Agilent Technologies, Inc. 2026  
Published in Italy, May 14, 2026

5994-9242EN

