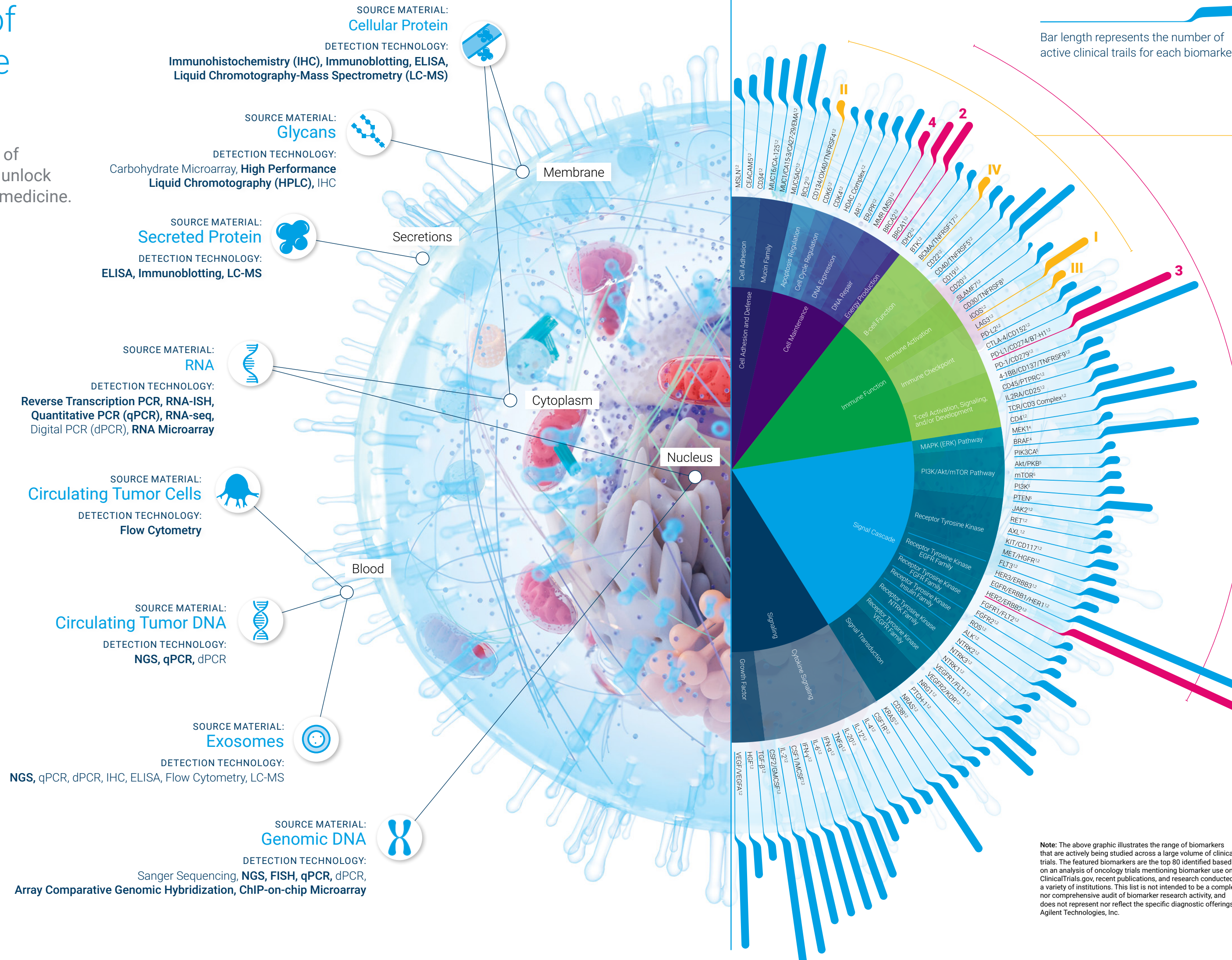


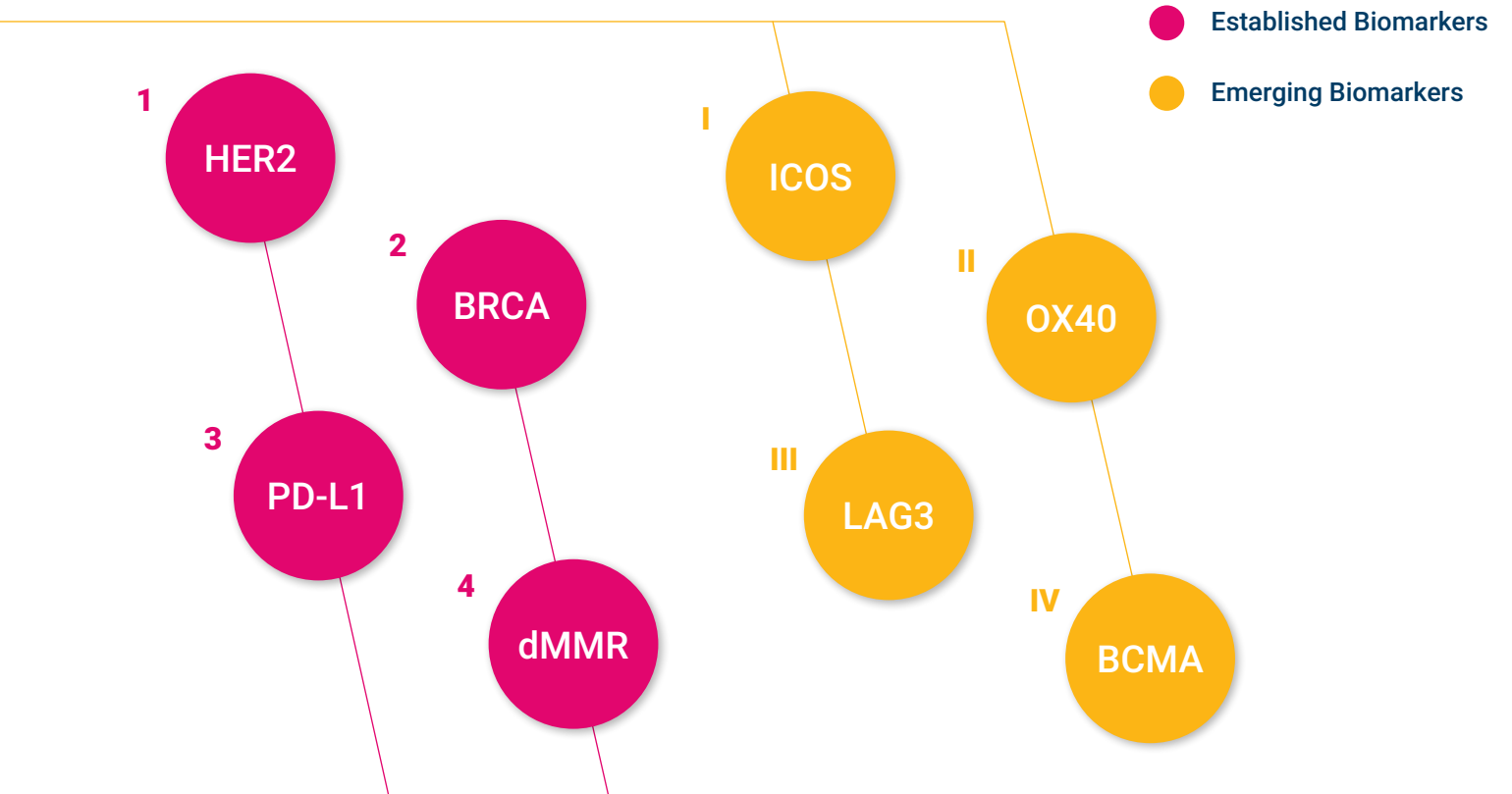
The Power of Cutting-Edge Technology

Agilent is at the forefront of technology innovation to unlock the promise of precision medicine.



The Future of Targeted Treatment

Agilent is a leading partner to drive clinical utility into proven pathways while helping to enable the next generation of predictive biomarkers.



High-throughput sequencing of novel and evolving biomarker panels, such as TMB and MSI, have the potential to further revolutionize precision medicine.

The Need for Expertise

At Agilent CDx, dedicated experts collaborate to combine experience with innovation, enabling the full potential of biomarker-driven landmark therapies.

Technologies in bold represent current Agilent capabilities

Note: Technologies in bold may not be approved for diagnostic use.

References:
 1. National Center for Biotechnology Information, U.S. National Library of Medicine. <https://www.ncbi.nlm.nih.gov> (accessed Sept. 3, 2019).
 2. Universal Protein Resource, UniProt Consortium. <https://www.uniprot.org> (accessed Sept. 3, 2019).
 3. O'Connor, O. A.; Bhagat, G.; Ganapathi K. A.; Kaplan, J.; Corradini, P.; Guitart, J.; Rosen, S. T.; Kuzel T. M. T-Cell Lymphomas. In *Hematology: Basic Principles and Practice*, 7th ed.; Hoffman, R., Benz, E. J., Silberstein, L. E., Heslop, H. E., Weitz, J. I., Anastasi, J., Salama, M. E., Abutalib, S. A., Eds.; Elsevier: Philadelphia, PA, 2018.
 4. McCain, J. The MAPK (ERK) Pathway: Investigational Combinations for the Treatment of BRAF-Mutated Metastatic Melanoma. *P. T.* **2013**, *38* (2), 96-108.
 5. Porta, C.; Paglino, C.; Mosca, A. Targeting PI3K/Akt/mTOR Signaling in Cancer. *Front. Oncol.* **2014**, *4*, 64.
 6. Galon, J.; Bruni, D. Approaches to Treat Immune Hot, Altered and Cold Tumours with Combination Immunotherapies. *Nat. Rev. Drug Discov.* **2019**, *18* (3), 197-218.
 7. *Predictive Biomarkers in Oncology: Applications in Precision Medicine*; Badve, S., Kumar, G. L., Eds. Springer: Cham, Switzerland, 2019.

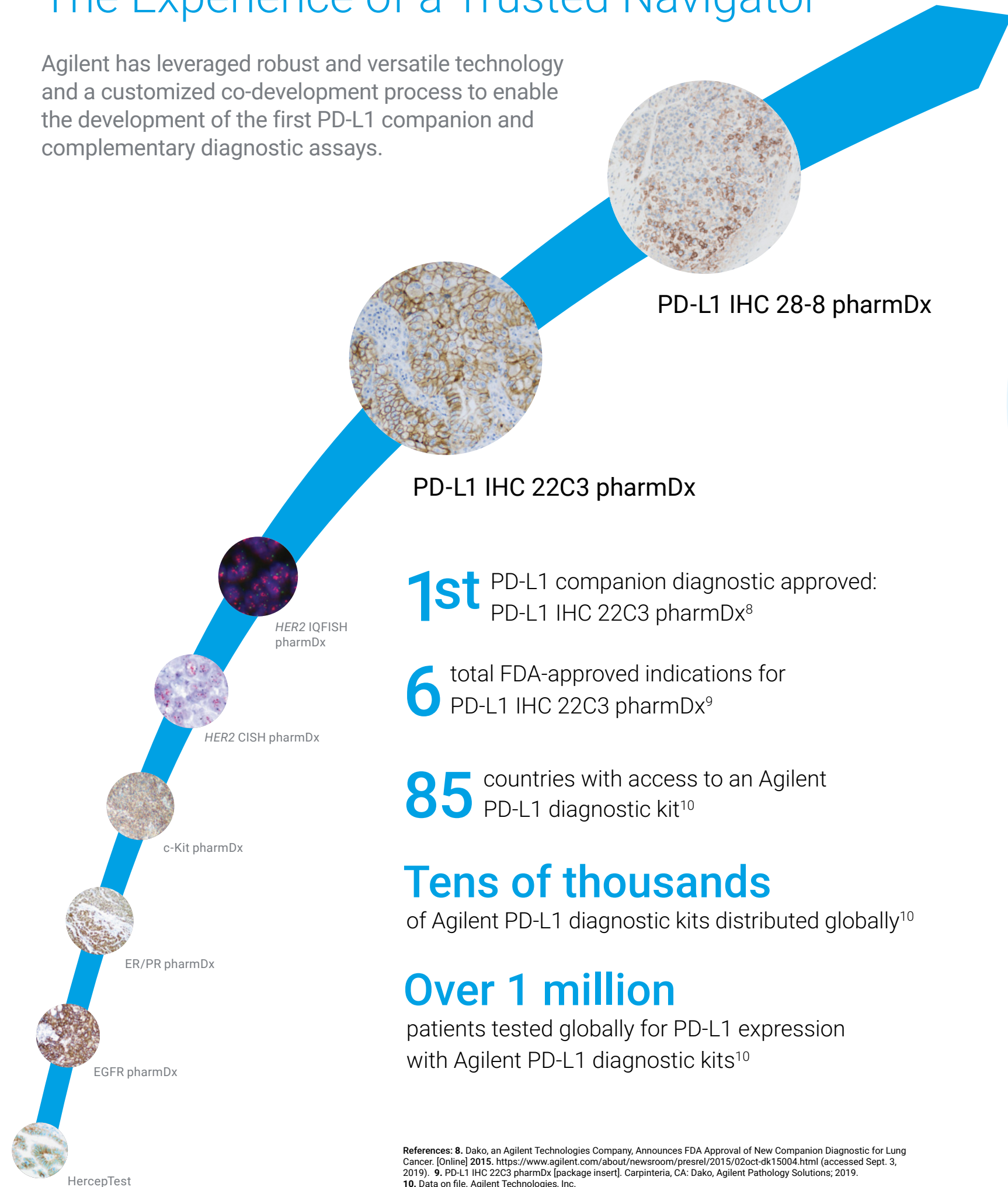
Note: The above graphic illustrates the range of biomarkers that are actively being studied across a large volume of clinical trials. The featured biomarkers are the top 80 identified based on an analysis of oncology trials mentioning biomarker use on ClinicalTrials.gov, recent publications, and research conducted by a variety of institutions. This list is not intended to be a complete nor comprehensive audit of biomarker research activity, and does not represent nor reflect the specific diagnostic offerings of Agilent Technologies, Inc.

This information is subject to change without notice.
 © Agilent Technologies, Inc. 2019
 Published in the USA, September 3, 2019



The Experience of a Trusted Navigator

Agilent has leveraged robust and versatile technology and a customized co-development process to enable the development of the first PD-L1 companion and complementary diagnostic assays.



PD-L1 IHC 28-8 pharmDx

PD-L1 IHC 22C3 pharmDx

1st PD-L1 companion diagnostic approved: PD-L1 IHC 22C3 pharmDx⁸

6 total FDA-approved indications for PD-L1 IHC 22C3 pharmDx⁹

85 countries with access to an Agilent PD-L1 diagnostic kit¹⁰

Tens of thousands of Agilent PD-L1 diagnostic kits distributed globally¹⁰

Over 1 million patients tested globally for PD-L1 expression with Agilent PD-L1 diagnostic kits¹⁰

References: 8. Dako, an Agilent Technologies Company, Announces FDA Approval of New Companion Diagnostic for Lung Cancer. [Online] 2015. <https://www.agilent.com/about/newsroom/presrel/2015/02oct-dk15004.html> (accessed Sept. 3, 2019). 9. PD-L1 IHC 22C3 pharmDx [package insert]. Carpinteria, CA: Dako, Agilent Pathology Solutions; 2019. 10. Data on file. Agilent Technologies, Inc.

The Expertise to Guide and Deliver

The combination of experienced people, optimized processes, and best-in-class technology make Agilent the ideal partner to drive a co-development program.



People

Seasoned professionals at all stages of co-development, from **discovery to commercialization**

Dedicated CDx division ensuring intense customer focus backed by Agilent's **broad expertise across cross-divisional resources**

Process

Adaptive program management boosts versatility and customization to best **meet partner needs**

Center of Excellence enables **integrated end-to-end alignment** across the entire product development process

Agile and rigorous design control to support **global registration**

Technology

A comprehensive portfolio of legacy and emerging technologies from a **single partner**

Access to Agilent's **full range of technology, platforms, and analytics** to power decisions based on biology and data

Get in touch to explore collaborative partnerships with Agilent that advance CDx-enabled therapy

Gulzar Sandhu
Head of Business Development,
Companion Diagnostics

Office: 805-318-6182 | Mobile: 805-881-1229
CDxpartnerships@agilent.com | agilent.com/en/CDx

Precision Medicine, Powered by Partnership

Discover how Agilent companion diagnostics (CDx) can help enable your targeted therapy programs for patients



Tested with PD-L1 IHC 22C3 pharmDx, treated with pembrolizumab

Tested with PD-L1 IHC 28-8 pharmDx, treated with nivolumab

Tested with HercepTest, treated with trastuzumab