

Purpose-Built for You to **Make a Difference**

Digital pathology powered by end-to-end expertise



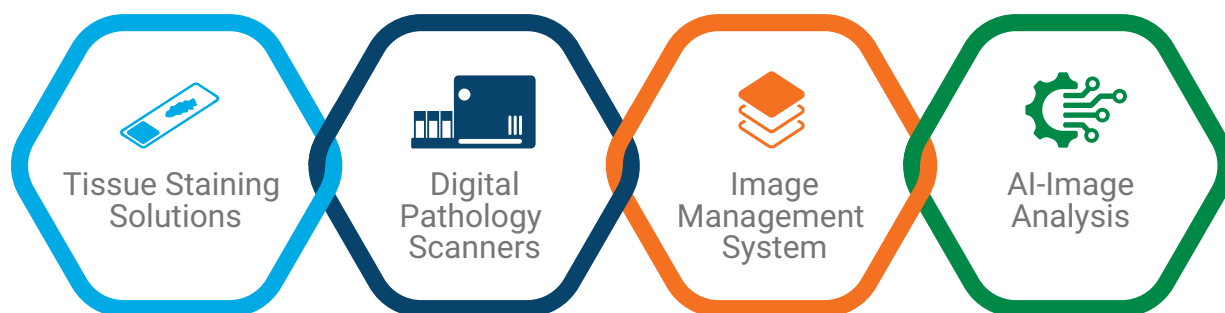
Agilent

Trusted Answers

A new era for pathology

Pathology labs are under immense pressure. Rising test volumes, increasing case complexity, and growing expectations for speed and accuracy in combination with shortage of pathologists are pushing traditional workflows to their limits. Agilent's digital pathology solutions are purpose-built to meet these challenges.

With Agilent, you're not just adopting digital pathology; you're advancing it with confidence, backed by a team of experts committed to helping you make a difference.



Agilent's open, end-to-end digital pathology solutions consist of scanners, image management systems (IMS) and AI image analysis algorithms. The whole setup is interoperable, with all systems working seamlessly together.¹ Every component is specifically selected to fit your current and future needs.² Our experts will help you design and install your solution, providing support throughout the process and beyond.

Curated for your confidence

Every slide tells a story and every detail matters. That's why digital pathology should do more than digitize; it should empower you to deliver the best possible care. Our purpose-built, end-to-end solutions are designed with intention and innovation, combining openness, flexibility, and deep integration to evolve with your lab's needs. Whether you're establishing your digital foundation or scaling to be at the forefront of digital transformation, we provide a seamlessly connected ecosystem. Our solutions cover everything from reliable staining to AI-powered decision support, all engineered to support your pathology lab's performance.

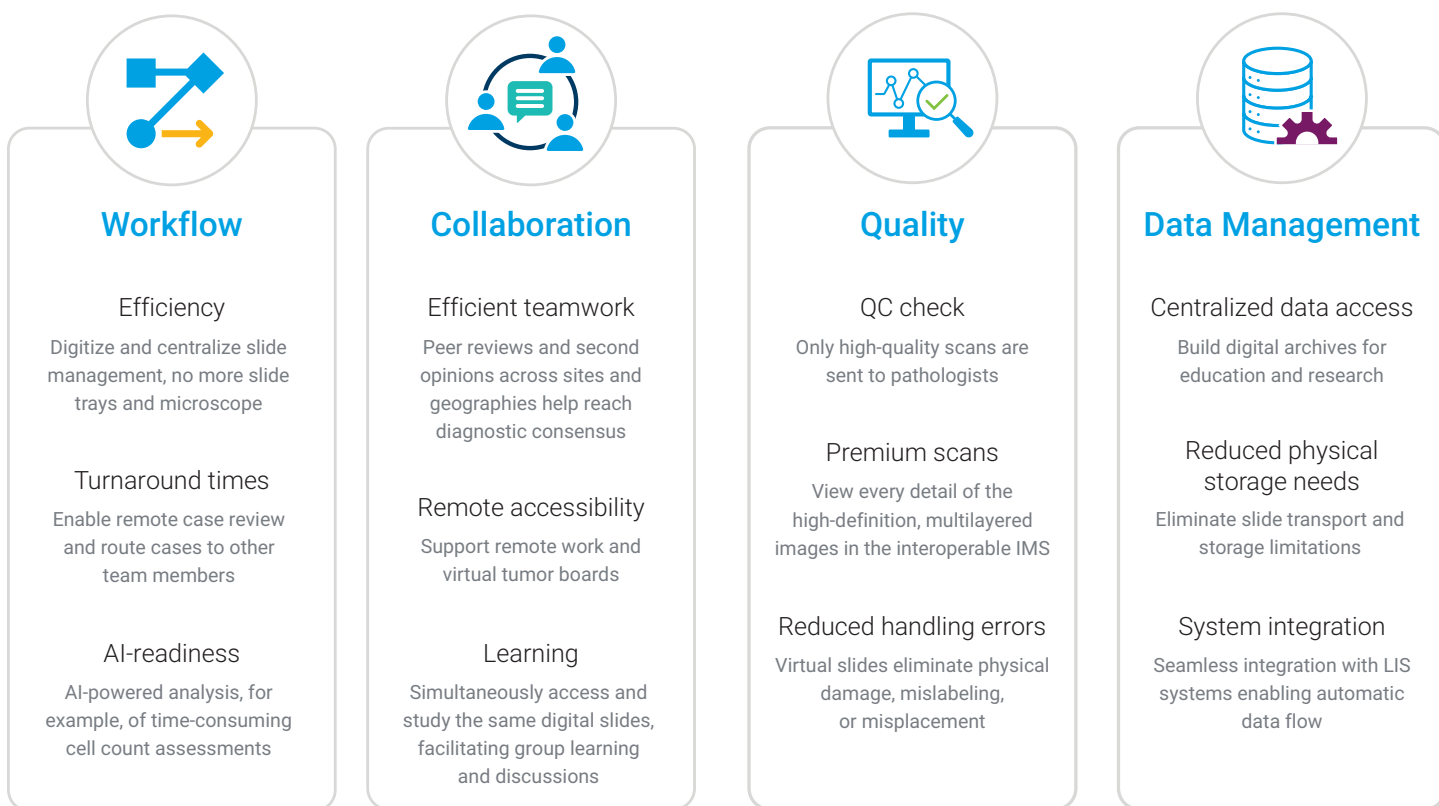


Every component of Agilent's digital pathology solution has a singular purpose: to empower you to provide the best possible results. Backed by our industry-leading pathology expertise and grounded in our shared goal of improving outcomes, our digital pathology ecosystem is designed to help you make a difference—enabling optimal efficiency, increased clinical utility and inspiring confident care.

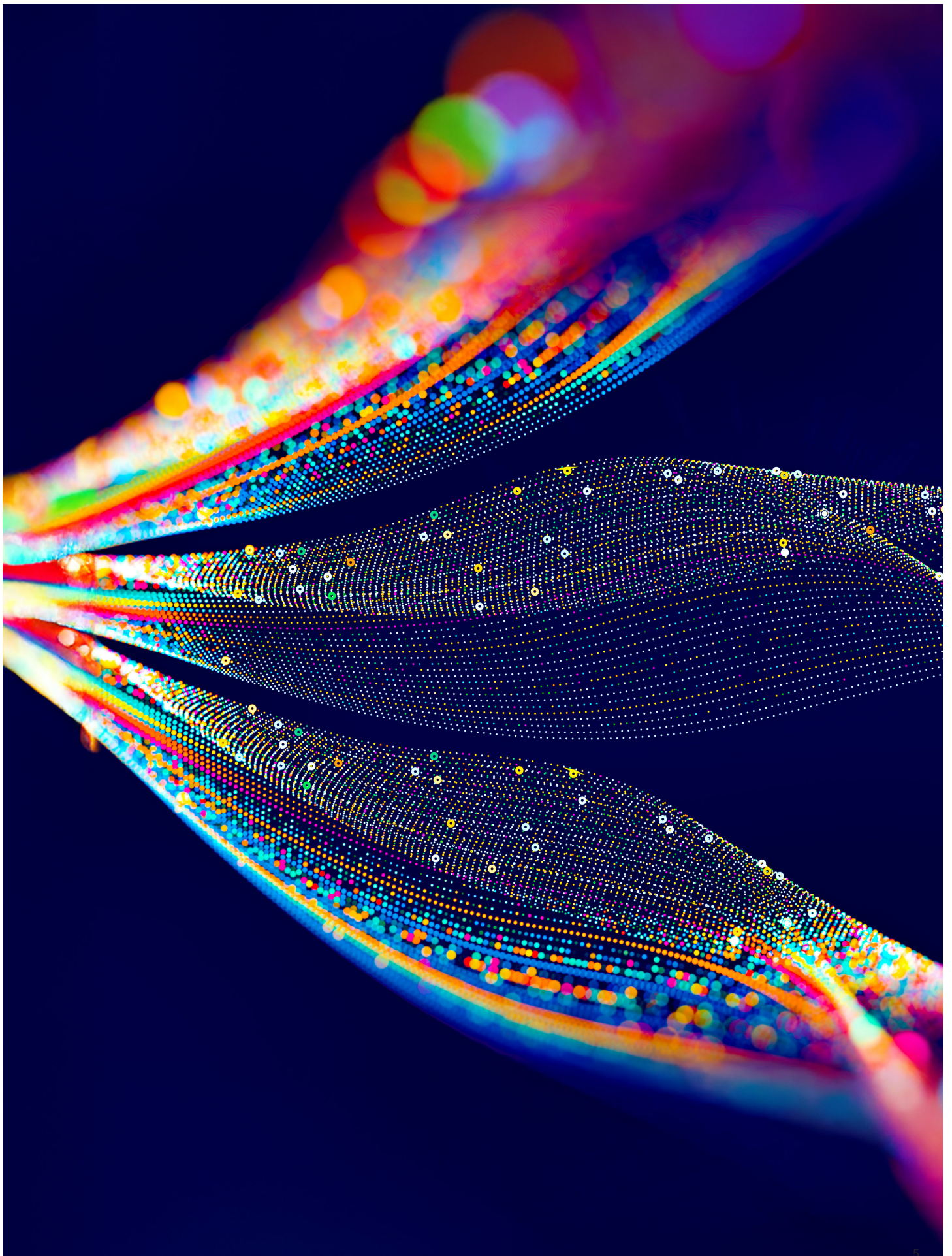
The power of digital pathology

Digital pathology is transforming how labs operate. By digitizing the slides, labs can change how data is viewed and interpreted. This enables teams in different locations to collaborate and work more efficiently. Imagine the benefits of faster peer reviews, remote consultations, and AI-powered interpretation support, all contributing to enhanced accuracy and clinical utility. Agilent's digital pathology solutions can help you drive lab efficiency, improve collaborations and empower you to provide the best possible results.

Examples of how digital pathology can help



Digital pathology empowers your lab to work smarter, collaborate better, and deliver faster, more accurate results—ultimately helping you achieve operational excellence.³⁻⁹





Fit for your needs

Our purpose-built digital pathology solutions bring together the best of innovation and intention, and are designed to meet the evolving needs of modern pathology labs. As we know that every lab is unique with individual needs, we have combined our proven tissue staining solutions with best-in-class whole-slide image scanners, image management systems, and AI-driven digital pathology applications. We offer a variation of digital pathology solutions to meet you where you are in your digital journey.

The freedom of interoperable and scalable solutions

The end-to-end digital pathology solutions are characterized by being open, flexible, and scalable with deep integration of the IMS and AI applications.



Open and agnostic

Interoperable and adaptable to your needs
Designed to fit into your lab, now and into the future



Flexible

Integrates with existing IT infrastructure connecting upstream and downstream with your LIS, LIMS, and PACS systems
Choose from enterprise, standalone, or cloud-based configurations



Scalable

Provide what you need to start, advance, or be at the forefront of digital pathology
Operating in a single site or a multilocation network

Whole slide image scanners



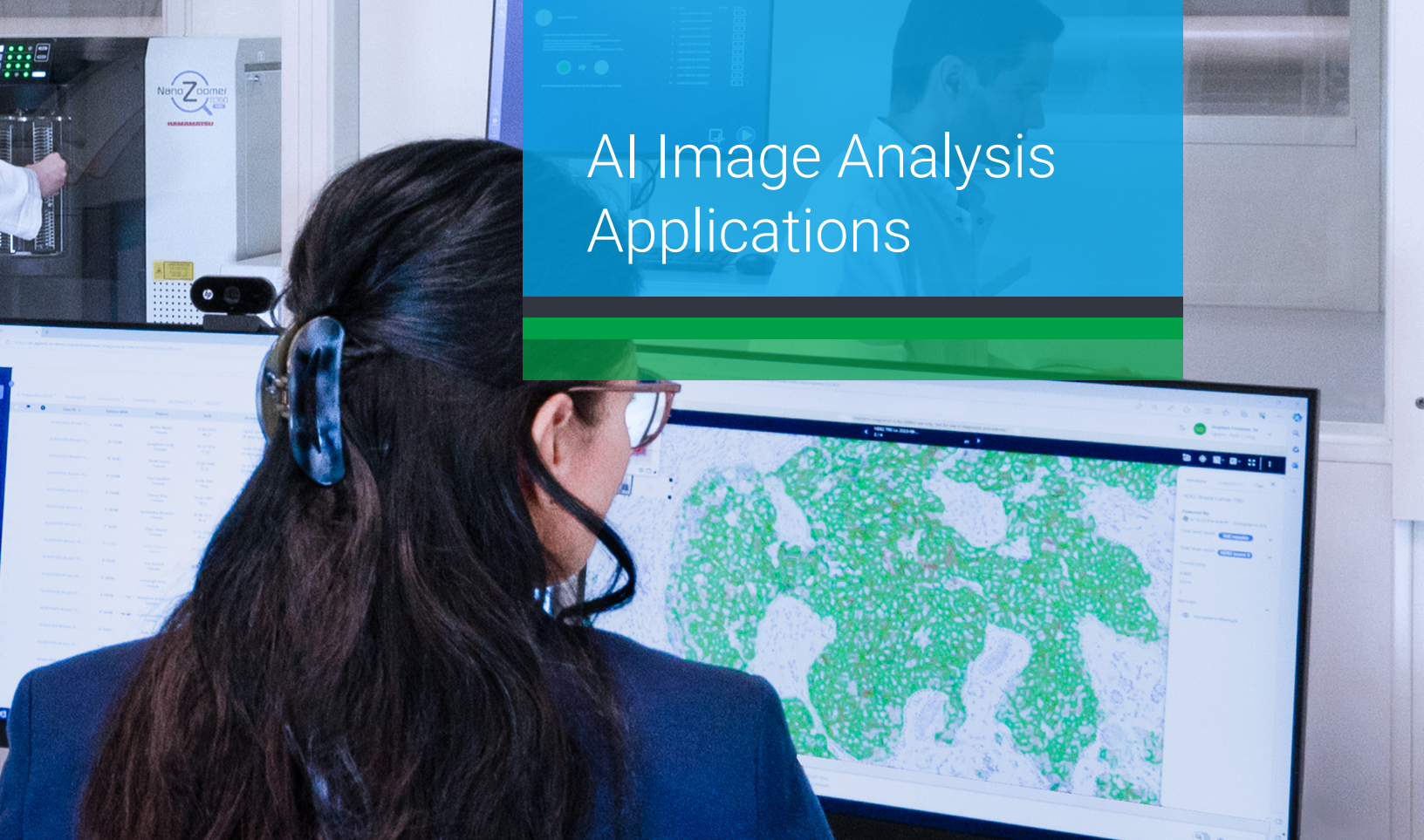
Advanced imaging technology from Hamamatsu delivers high-speed, high-resolution slide capture to support labs of all sizes and throughput needs.

- Broad portfolio of high- and mid-throughput scanners*
- High-speed, high-resolution image capture
- Automated, open-platform systems for seamless integration
- Optimized for multiple stain types
- Supports DICOM and NDPI formats
- Scalable to meet growing lab volumes
- Enables fast, easy digital sharing and archiving



Choose from two open, AI-ready platforms from Proscia and PathAI designed with and for pathologists to streamline digital workflows and enhance collaboration.

- Selection of high-performance image management platforms*
- Intuitive, pathologist-centric user experience
- Open and interoperable with LIS, LIMS, and PACS
- Supports a range of formats, including DICOM
- Deep integration with AI applications for seamless workflows
- Highly scalable for single or multisite labs
- Available as on-premises or cloud-based solutions



AI Image Analysis Applications

Agilent offers one of the broadest selections of AI-powered pathology applications from Visiopharm and PathAI, delivering fast, objective, and reproducible insights.

- Ready-to-use AI algorithms for wide range of biomarkers*
- Quantified, standardized analysis for consistent decision support
- Deep integration with IMS platforms for streamlined workflows
- Workflow and quality tools to optimize efficiency
- Supports both diagnostic and research applications
- Flexible deployment: on-premises or cloud-based

Agilent offers a fully integrated, best-in-class digital pathology ecosystem that delivers speed, precision, and flexibility—tailored to your lab's unique needs.

Our digital pathology partners:

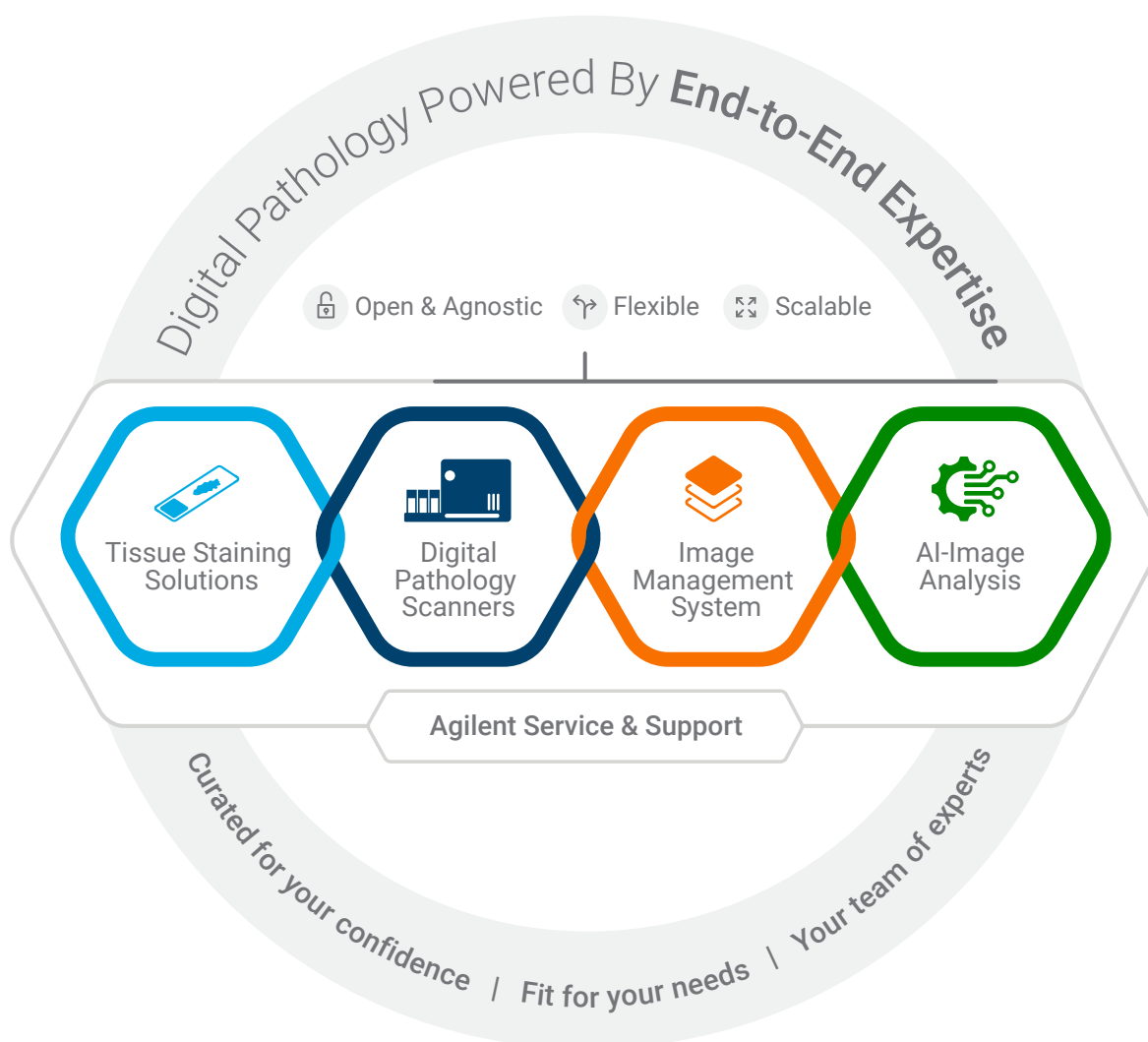


Your team of experts

For many, the fragmented digital pathology environment requires maintaining relationships with multiple partners. We are your one point of contact in your digital pathology journey. Your local Agilent team will manage digital pathology service and support for you from end to end, including for products offered through our partners. This gives you the freedom to focus on what matters most, the patients.

When you choose Agilent, you'll get a partner with over 50 years of pathology expertise. Have complete confidence that we understand the unique needs of your lab and how you make a difference. As your single point of contact—from staining to AI decision support—we offer comprehensive, industry-leading support. We'll be with you every step of the way, from workflow design to installation support, and beyond. With our expert team and trusted partners, we deliver a seamless digital pathology solution tailored to your success.

With Agilent, you're choosing to never go it alone.



References

1. Agilent Technologies. Evaluating the Robustness and Functionality of an Open, Agnostic, End-to-End Digital Pathology Solution. Application Note. Available online: www.agilent.com/cs/library/applications/29662-d0128677-100-an-dig-path-evaluating-robustness-agilent-en.pdf (accessed 2025-03-19).
2. Agilent Technologies. Modeling Agilent End-to-End Digital Pathology Solutions for Lab Efficiency. Whitepaper. Available online: www.agilent.com/cs/library/whitepaper/public/29672en-d0133888-wp-end-to-end-digital-pathology-solutions-efficiency-agilent.pdf (accessed 2025-08-28).
3. Berbís, M. A.; McClintock, D. S.; Bychkov, A.; Van der Laak, J.; Pantanowitz, L.; Lennerz, J. K.; Cheng, J. Y.; Delahunt, B.; Egevad, L.; Eloy, C.; et al. Computational pathology in 2030: A Delphi study forecasting the role of AI in pathology within the next decade. *EBioMedicine* **2023**, 88, 104427. DOI: [10.1016/j.ebiom.2022.104427](https://doi.org/10.1016/j.ebiom.2022.104427).
4. Jahn, S. W.; Plass, M.; Moinfar, F. Digital Pathology: Advantages, Limitations and Emerging Perspectives. *J. Clin. Med.* **2020**, 9 (11), 3697. DOI: [10.3390/jcm9113697](https://doi.org/10.3390/jcm9113697).
5. Munari, E.; Scarpa, A.; Cima, L.; Pozzi, M.; Pagni, F.; Vasuri, F.; Marletta, S.; Dei Tos, A. P.; Eccher, A. Cutting-edge technology and automation in the pathology laboratory. *Virchows Arch.* **2024**, 484 (4), 555–566. DOI: [10.1007/s00428-023-03637-z](https://doi.org/10.1007/s00428-023-03637-z).
6. Wu, B.; Moeckel, G. Application of digital pathology and machine learning in the liver, kidney and lung diseases. *J. Pathol. Inform.* **2023**, 14, 100184. DOI: [10.1016/j.jpi.2022.100184](https://doi.org/10.1016/j.jpi.2022.100184).
7. Hanna, M. G.; Reuter, V. E.; Samboy, J.; England, C.; Corsale, L.; Fine, S.W.; Agaram, N.P.; Stamelos, E.; Yagi, Y.; Hameed, M.; et al. Implementation of Digital Pathology Offers Clinical and Operational Increase in Efficiency and Cost Savings. *Arch. Pathol. Lab. Med.* **2019**, 143 (12), 1545–1555. DOI: [10.5858/arpa.2018-0514-OA](https://doi.org/10.5858/arpa.2018-0514-OA).
8. Baxi, V.; Edwards, R.; Montalto, M.; Saha, S. Digital Pathology and Artificial Intelligence in Translational Medicine and Clinical Practice. *Mod. Pathol.* **2022**, 35 (1), 23–32. DOI: [10.1038/s41379-021-00919-2](https://doi.org/10.1038/s41379-021-00919-2).
9. Rakha, E.A.; Toss, M.; Shiino, S.; Gamble, P.; Jaroensri, R.; Mermel, C.H.; Chen, P.C. Current and future applications of artificial intelligence in pathology: a clinical perspective. *J Clin Pathol.* **2021**, 4(7):409-414. DOI: [10.1136/jclinpath-2020-206908](https://doi.org/10.1136/jclinpath-2020-206908).

Learn more:

www.agilent.com/en/solutions/pathology-solutions/digital-pathology



* Disclaimer: The digital pathology solutions are not available in all markets and may have different regulatory statuses. Please check with your local Agilent representative for availability in your country.

D0136696_1.00

This information is subject to change without notice.

© Agilent Technologies, Inc. 2025
Published in the USA, September 12, 2025
29681 2025SEP02