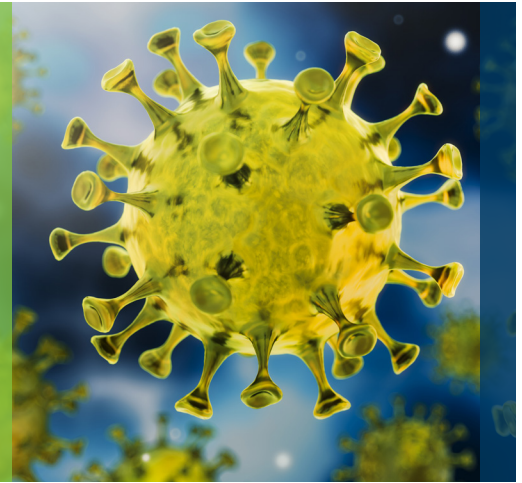


Serological Assays Begin With Quality Antibodies

Use Agilent Dako-branded antibodies to develop accurate, consistent, and scalable serological assays



Agilent
Dako

An ideal serological assay should be accurate, consistent, and scalable. Such characteristics require the use of anti-human immunoglobulin antibodies with both high sensitivity and broad specificity to detect all captured human antibodies. Furthermore, lot-to-lot consistency, secure supply, and prompt delivery are also essential parameters when choosing the antibody vendor.

For these reasons, Agilent Dako-branded antibodies have been a trusted source for the development of serological assays for decades and remain popular among top tier IVD manufacturers and research institutions.^{1,2}

High sensitivity and broad specificity

We have employed selective breeding of our rabbits for over 50 years since the establishment of the first farm, which contributes to our unique capability to produce polyclonal antibodies with high sensitivity and broad specificity.

Guaranteed minimum cross-reaction levels

Thanks to our quality management system, the ELISA pure grade antibodies are purified to guaranteed minimum levels of cross-reaction to other plasma or serum proteins.

Consistent performance with very low lot-to-lot variation

Another advantage of our polyclonal rabbit antibodies is the consistent lot-to-lot performance that minimizes the amount of assay revision between lots, providing greater confidence and efficiency for the assay developers.

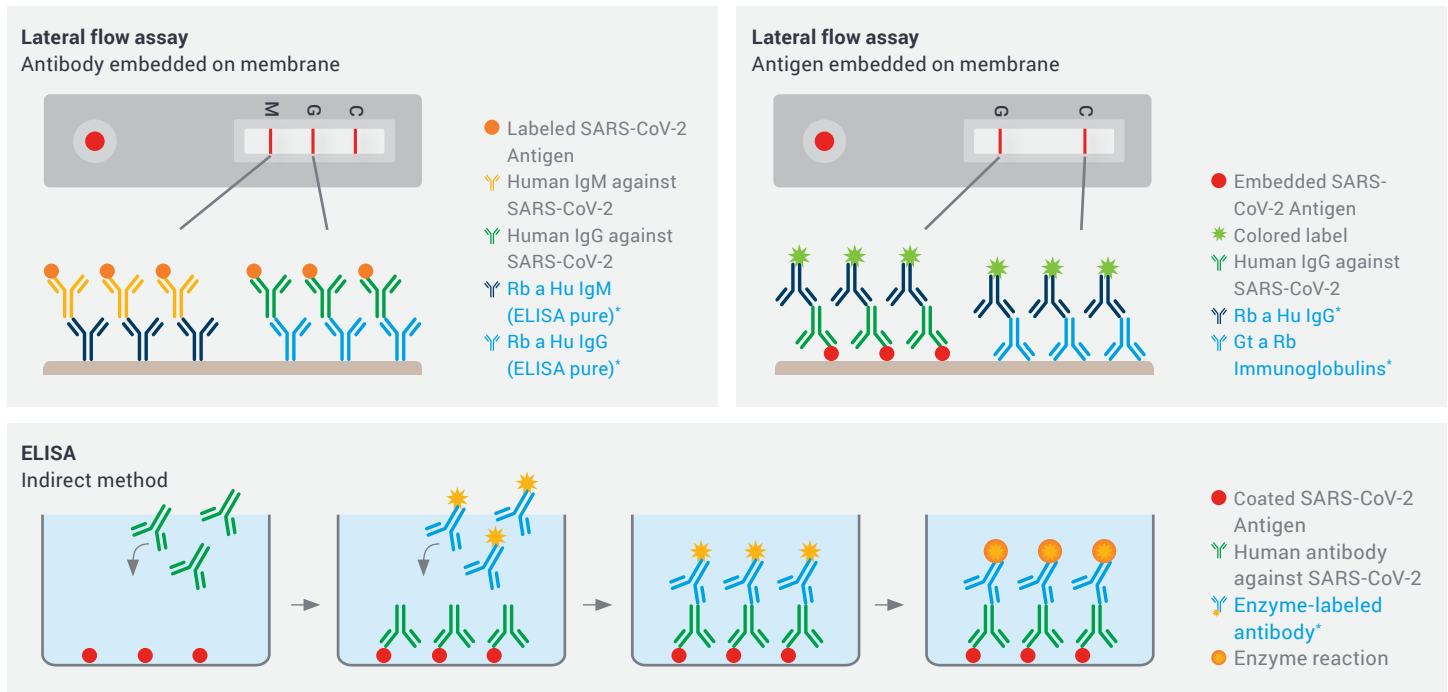
Secure supply and prompt delivery in high volume

With the modern production line and global sales and service network of Agilent, we can fulfill your urgent demand from milliliter to liter volumes.

Global partnership with scientific and sales support

Beyond selling antibodies as raw materials, we are your partner by providing access to our experienced and knowledgeable scientific and sales support teams.

Agilent Dako-branded anti-human immunoglobulin antibodies are available in different conjugated forms to be applied in different technology platforms of serological testing.



* Agilent Dako-branded products

Ordering information

Product description	Product code			Recommended applications	
Rabbit anti-human polyclonal antibodies	Immunoglobins	IgG	IgM	IgA	
	Unconjugated	A042415	A042615	A009215	Lateral flow assay, ELISA, and chemiluminescence immunoassay (CLIA)
	ELISA pure	A042315	A042515	A026215	
	HRP-conjugated	P021415	P021515	P021615	ELISA & CLIA
	AP-conjugated	D033615	-	-	
	Immunoglobins	IgG/IgM/IgA/Kappa/Lambda			
HRP-conjugated	P021215			ELISA & CLIA	
Rabbit anti-Dinitrophenyl	V040115			Lateral flow assay	
Rabbit anti-FITC	V040315				
Goat anti-rabbit immunoglobins	O910715 & Z042115 (affinity isolated)				
Streptavidin-Dextran500	OA22215			Signal enhancing reagent for lateral flow assay	

References

- Okba N. et al. Severe Acute Respiratory Syndrome Coronavirus 2-Specific Antibody responses in Coronavirus disease. Emerg Infect Dis. 2019. 26: early release.
- Weiskopf, D. et al. Phenotype of SARS-CoV2-specific T cells in COVID-19 patients with acute respiratory distress syndrome.

For Research Use Only. Not for use in diagnostic procedures.

For more information on our Antibodies & Assay Solutions, please visit our e-catalogue at:
https://www.agilent.com/cs/library/catalogs/public/18269%20Catalog_OEM_2020-21.pdf

Please contact us for more details:
rpsupport@agilent.com

www.agilent.com

This information is subject to change without notice.

© Agilent Technologies, Inc. 2020
 29304 D60543_02 2020JUN10