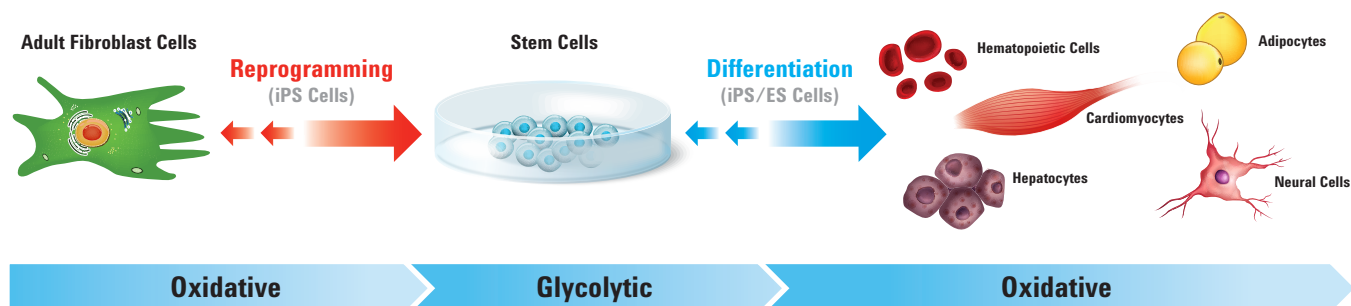


STEM CELL RESEARCH

Agilent Seahorse XF Live Cell Metabolism Solutions

APPLICATION BRIEF

Improve Differentiation and Reprogramming Outcomes



Identify Pluripotency and Differentiation Transitions

Cellular metabolic phenotyping measures the cells' energy requirement and pathway preference for readying the transition between undifferentiated and differentiated states. Metabolic switching occurs rapidly as cells transition from quiescent to pluripotent and/or from pluripotent to differentiated.

Seahorse XF Technology:

- **Live cell**
- **Real-time**
- **Label-free**
- **Dynamic injection ports**
- **Measures oxygen consumption and glycolytic rates simultaneously**



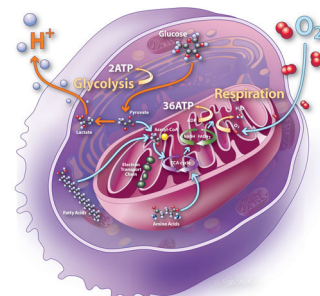
Seahorse XF Assays & Kits:

- **XF Cell Mito Stress Test Kit**
- **XF Glycolysis Stress Test Kit**
- **XF Glycolytic Rate Assay Kit**
- **XF Mito Fuel Flex Test Kit**
- **XF Cell Energy Phenotype Test Kit**

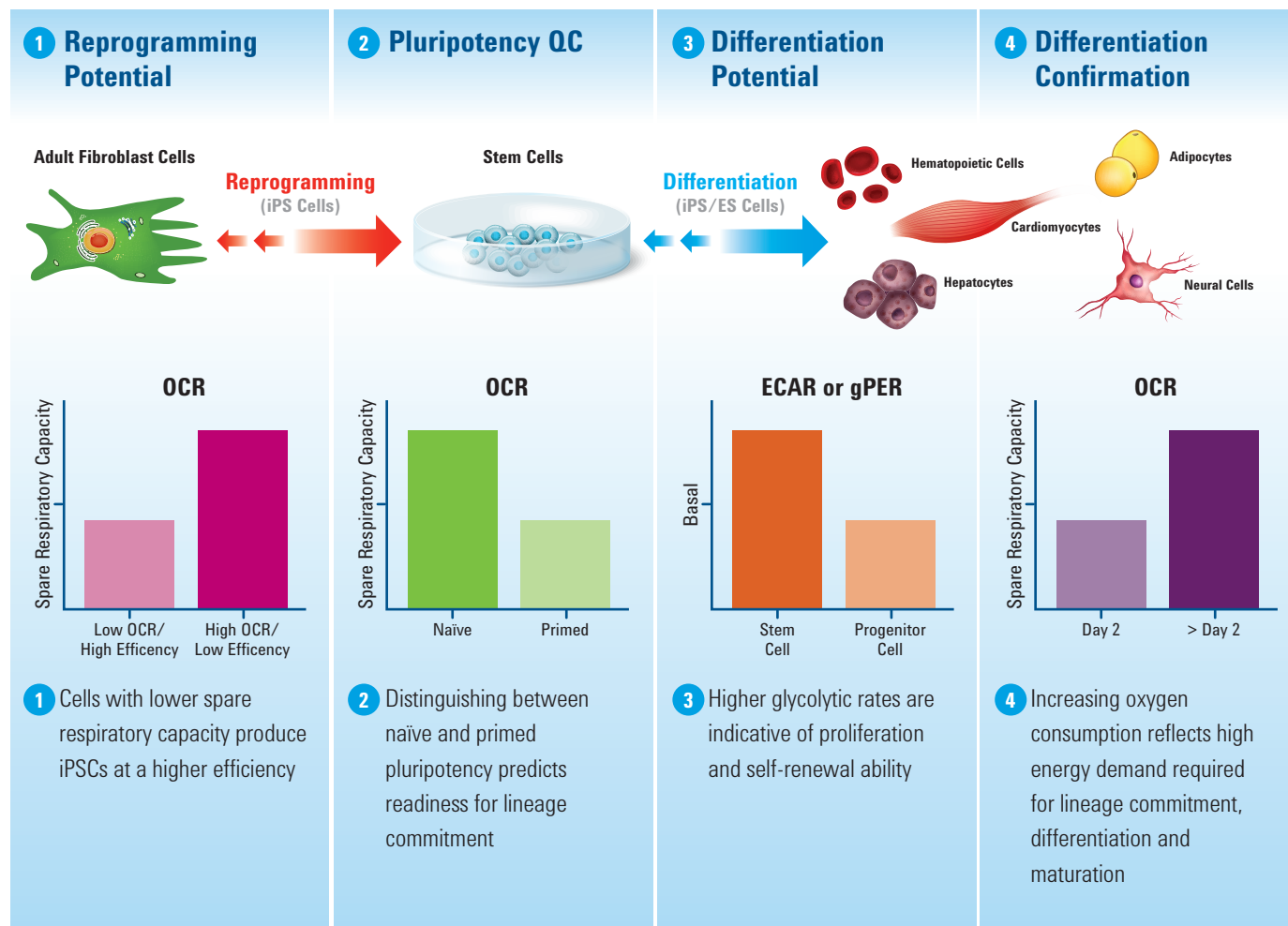
Learn More About Seahorse XF Technology and Stem Cell Research www.agilent.com/chem/StemCells

Cellular age and origin, in addition to donor variability, protocol differences, growth rates and media choices all contribute to inconsistent reprogramming and/or differentiation efficiencies. Seahorse XF technology enables reliable measurements that predict, monitor, and track cell fate transitions. Discover how these metabolic measurements can be used as indicators to minimize inefficiencies and improve differentiation and reprogramming approaches.

Routine assays make identifying cell phenotype and cell transitions easy. What's more, the metabolic phenotyping analysis that Seahorse XF delivers provides the tools and knowledge to customize your approach, and push the conventional boundaries of stem cell research through the development of new assays.



The Power of Cell Metabolic Phenotyping With Agilent Seahorse XF Technology FOR STEM CELL RESEARCH



More about stem cells

www.agilent.com/chem/StemCells

Buy online

www.agilent.com/chem/store

Application notes

www.agilent.com/cs/library/applications/5991-7130EN.pdf

Publications Database

www.agilent.com/publications-database/

Bibliographies citing Seahorse XF data on stem cell research

www.agilent.com/cs/pubimages/misc/StemCells_2017_April_BiblioPage.pdf

Find a local Agilent customer center in your country

www.agilent.com/chem/contactus

USA and Canada

1-800-227-9770

agilent_inquiries@agilent.com

Europe

info_agilent@agilent.com

Asia Pacific

inquiry_lsca@agilent.com

For Research Use Only. Not for use in diagnostic procedures.

This information is subject to change without notice.

© Agilent Technologies, Inc. 2017
Printed in the USA July 1, 2017
5991-8171EN