



# Trace solvents in absolute ethanol

## Application Note

BioPharma

### Authors

Agilent Technologies, Inc.

### Introduction

This analysis can be done very well with the VF-1701ms phase. Original residual solvent methods in pharma use the VF-624ms columns which has thicker film especially to maximise separation and loadability for the most volatile solvents, see also Application 2402.



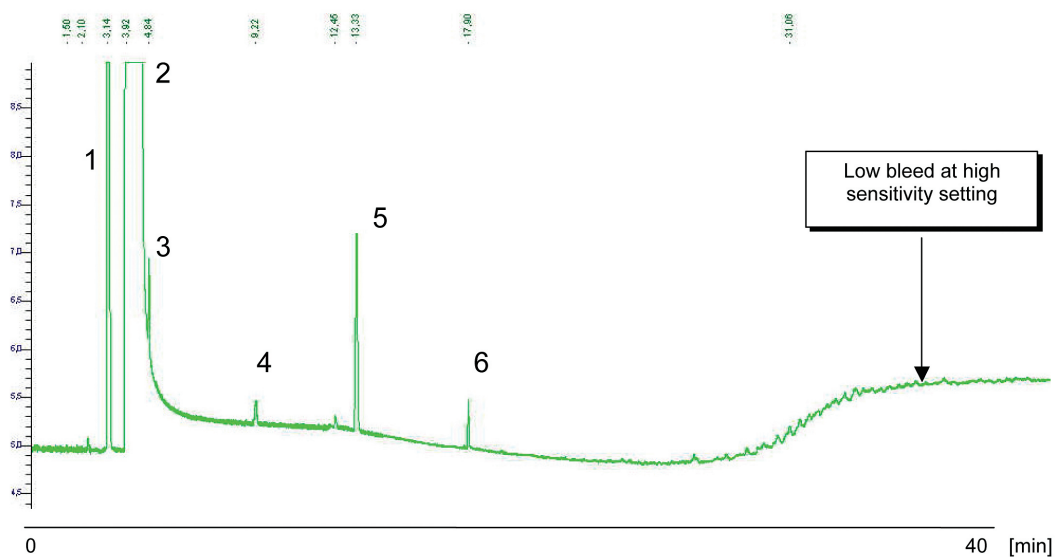
**Agilent Technologies**

## Conditions

Technique : GC-capillary  
Column : Agilent FactorFour VF-1701ms, 0.32 mm x 30 m  
fused silica (df = 1.0  $\mu$ m) (Part no. CP9163)  
Temperature : 40 °C (12 min)  $\rightarrow$  240 °C, 10 °C/min  
Carrier Gas : Helium, 1 mL/min  
Injector : Split, 1:20,  
T = 200 °C  
Detector : FID  
T = 280 °C  
Sample : ppm in ethanol

## Peak identification

1. methanol
2. ethanol
3. unknown
4. benzene
5. acetal
6. 4-methyl-pentan-2-ol



[www.agilent.com/chem](http://www.agilent.com/chem)

This information is subject to change without notice.

© Agilent Technologies, Inc. 2011

Printed in the USA

31 October, 2011

First published prior to 11 May, 2010

A02408



**Agilent Technologies**