



Peptides

Application Note

BioPharma

Authors

Agilent Technologies, Inc.

Introduction

Peptide HPLC is straightforward with Agilent Pursuit 5 μm C8 material in a ChromSep cartridge. Five peptides are separated in 12 minutes.



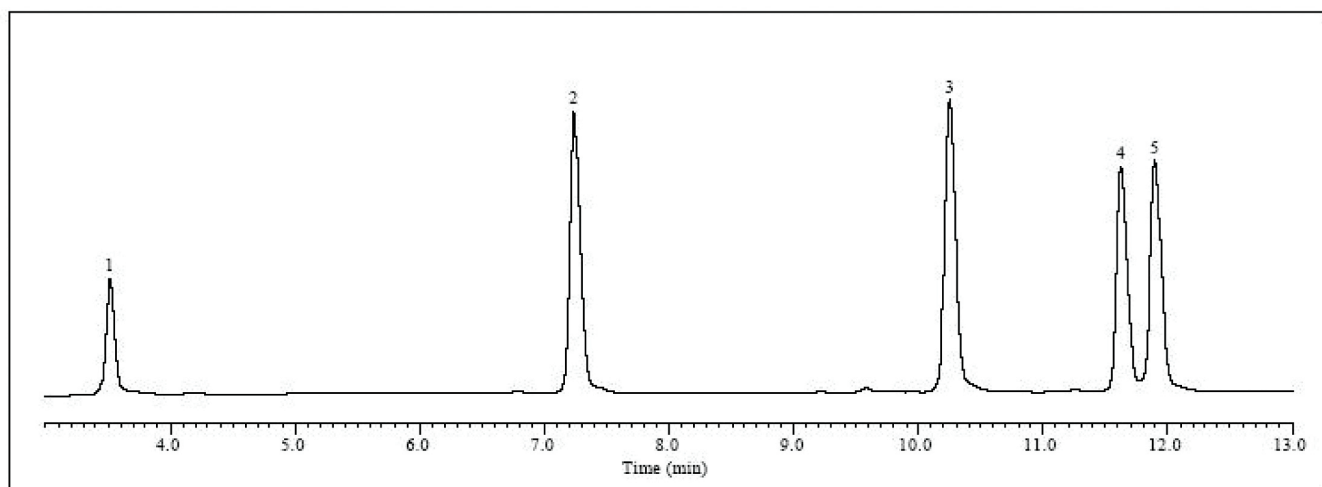
Agilent Technologies

Conditions

Technique : HPLC
Column : Agilent Pursuit C8, 4.6 x 150 mm, 5 μ m
Part no. : Conventional A3030150X046
ChromSep Cartridge System A3030150C046
Temperature : Ambient
Eluent : A: 0.1% TFA in water
B: 0.1% TFA in MeCN
Gradient : 10 - 40% B in 15 min.
Flow rate : 1.0 mL/min
Detector : UV @ 295 nm

Peak identification

1. gly-tyr
2. val-tyr-val
3. methionine-enkephalin
4. angiotensin II
5. leucine enkephalin



www.agilent.com/chem

This information is subject to change without notice.

© Agilent Technologies, Inc. 2011

Printed in the USA

31 October, 2011

First published prior to 11 May, 2010

A02330



Agilent Technologies