



Insulin

Application Note

BioPharma

Authors

Agilent Technologies, Inc.

Introduction

HPLC using an Agilent Polaris C18 column identifies bovine insulin and an impurity in six minutes.



Agilent Technologies

Conditions

Column : Agilent Polaris C18-A, 4.6 x 150 mm, 5 μ m
Part no. A2000150X046

Eluent : A: H₂O + 0.1% HCOOH
B: MeCN + 0.1% HCOOH

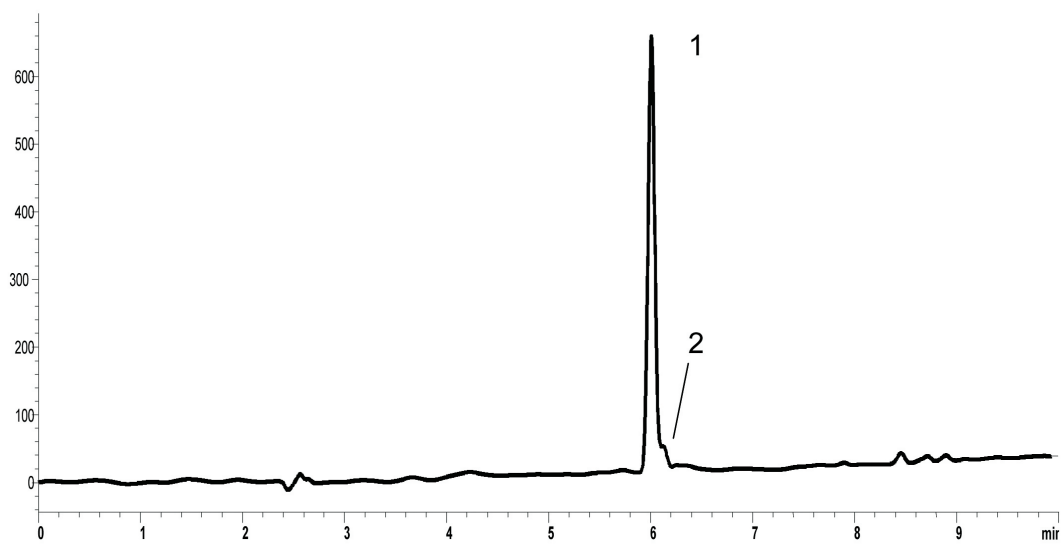
Gradient : 20 - 65% B in 10 min.

Flow : 1.0 mL/min

Detection : UV @ 220 nm

Peak identification

1. bovine insulin
2. bovine insulin impurity



www.agilent.com/chem

This information is subject to change without notice.

© Agilent Technologies, Inc. 2011

Printed in the USA

31 October, 2011

First published prior to 11 May, 2010

A02004



Agilent Technologies