

# Gases

## Gas analysis in nuclear power plant

### Author

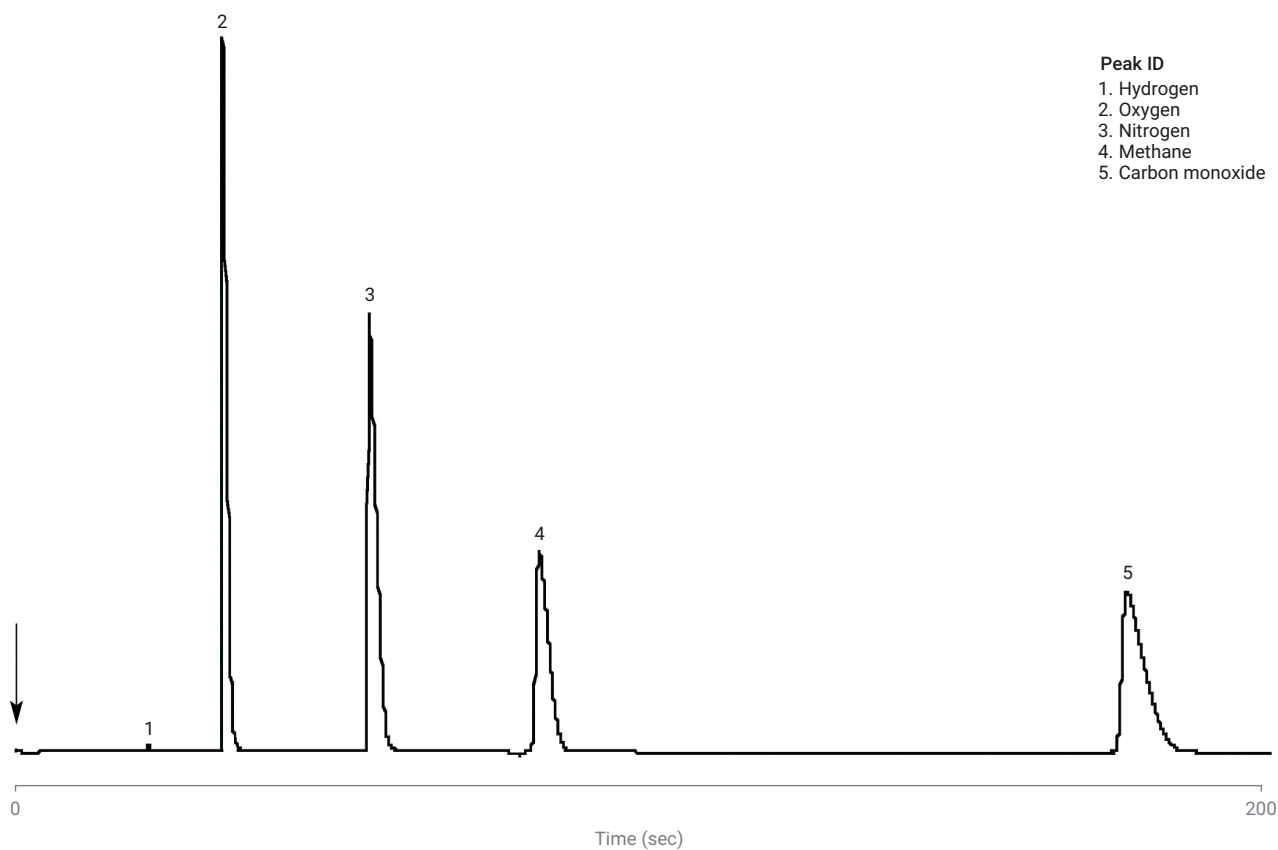
Agilent Technologies, Inc.

### Introduction

The environment of the reactor in a nuclear power plant must be checked for the presence of different gases. It is important is to have a portable system with sufficient sensitivity and separation power, such as the Agilent 490 Micro GC with an Agilent CP-Molsieve 5Å column.

## Conditions

Technique	Micro-GC
Column	Agilent CP-Molsieve 5Å, 10 m × 0.25 mm
Temperature	50 °C
Carrier Gas	He, 100 kPa (1.0 bar, 14 psi)
Pressure Program	No
Heated Injector	No
Injection Time	100 msec
Concentration Range	5%
Matrix	N <sub>2</sub>
Courtesy	Pascal Vattaire/Jean-Luc Barranca, Agilent France S.A.



[www.agilent.com](http://www.agilent.com)

DE69467404

This information is subject to change without notice.

© Agilent Technologies, Inc. 2010, 2022  
Printed in the USA, August 12, 2022  
A01621