



Gases

Analysis of permanent gases on a thick film column

Application Note

Environmental

Authors

Agilent Technologies, Inc.

Introduction

Gas chromatography with a thick film Agilent CP-Molsieve column separates six permanent gases in eight minutes.



Agilent Technologies

Conditions

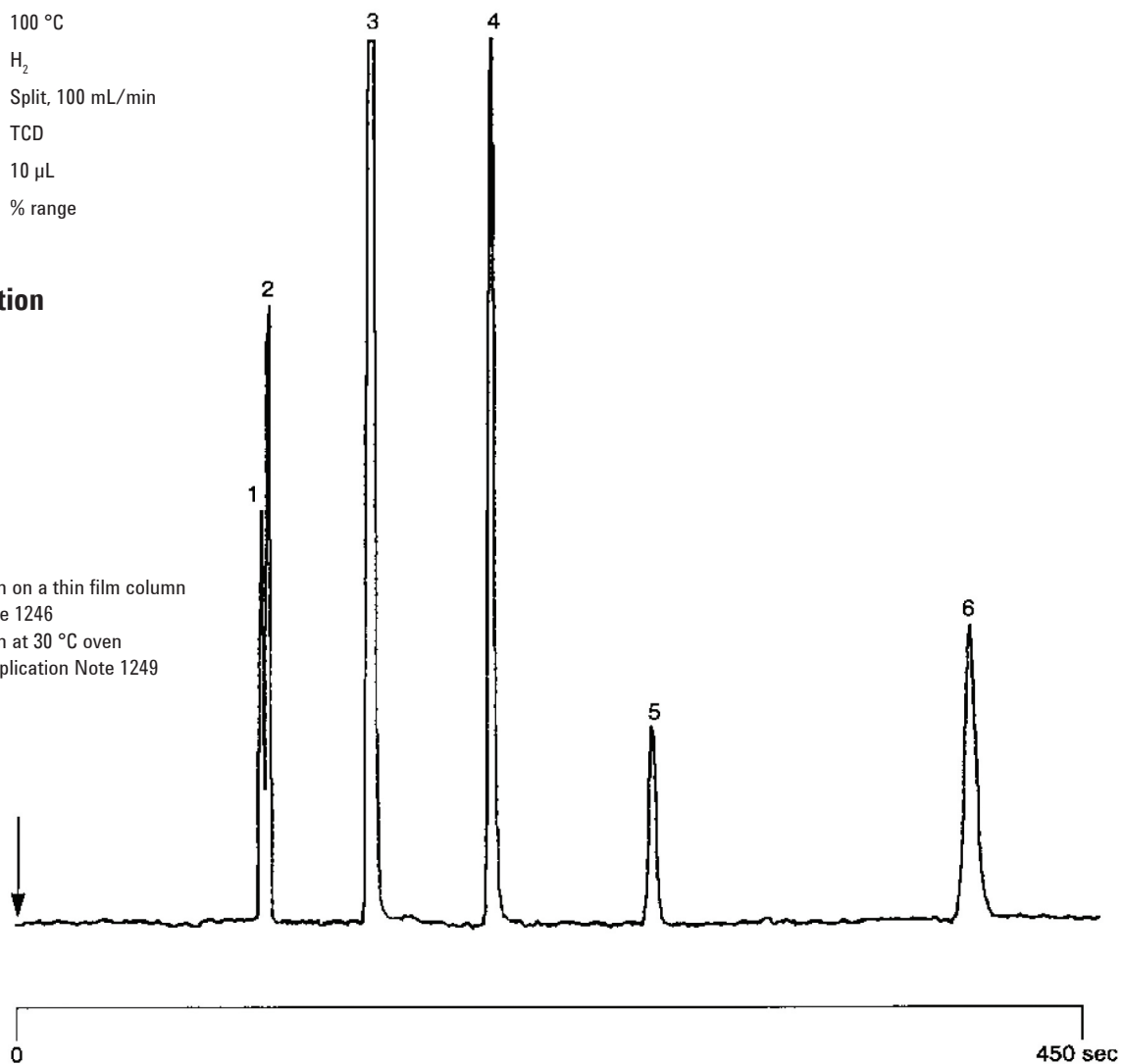
Technique : GC-capillary
Column : Agilent CP-Molsieve 5Å, 0.53 mm x 25 m fused silica
PLOT CP-Molsieve 5Å (df = 50 µm)
(Part no. CP7538)
Temperature : 100 °C
Carrier Gas : H₂
Injector : Split, 100 mL/min
Detector : TCD
Sample Size : 10 µL
Concentration Range : % range

Peak identification

1. helium
2. neon
3. argon + oxygen
4. nitrogen
5. methane
6. carbon monoxide

Remarks:

1. For same application on a thin film column see Application Note 1246
2. For same application at 30 °C oven temperature see Application Note 1249



www.agilent.com/chem

This information is subject to change without notice.

© Agilent Technologies, Inc. 2011

Printed in the USA

31 October, 2011

First published prior to 11 May, 2010

A01247



Agilent Technologies