



Solvents

Application Note

Environmental

Authors

Agilent Technologies, Inc.

Introduction

Fast gas chromatography with an Agilent PoraPLOT Q column identifies water in 1,2-dichloroethane in less than three minutes.



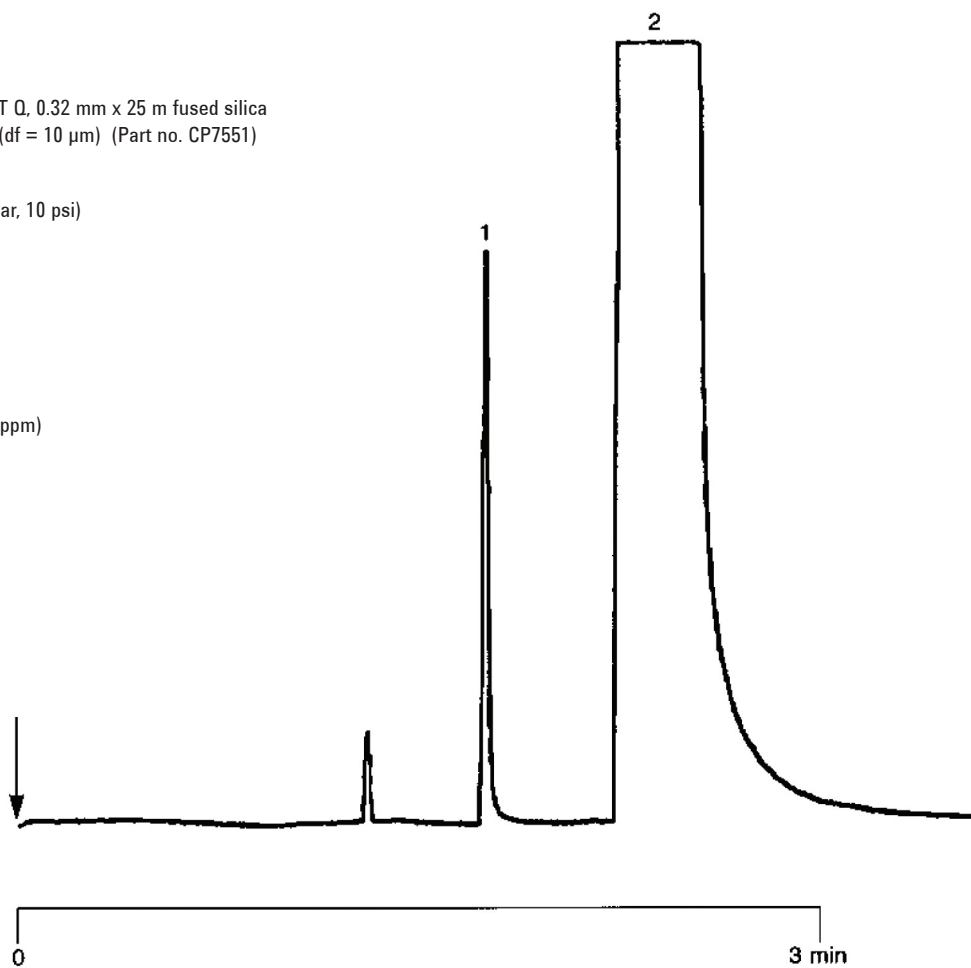
Agilent Technologies

Conditions

Technique : GC-capillary
Column : Agilent PoraPLOT Q, 0.32 mm x 25 m fused silica
PLOT PoraPLOT (df = 10 μ m) (Part no. CP7551)
Temperature : 120 °C
Carrier Gas : He, 70 kPa (0.7 bar, 10 psi)
Injector : Split, 1:20
Detector : μ -TCD

Peak identification

1. water (75 ppm w/w, detection limit 5 ppm)
2. 1,2-dichloroethane



www.agilent.com/chem

This information is subject to change without notice.

© Agilent Technologies, Inc. 2011

Printed in the USA

31 October, 2011

First published prior to 11 May, 2010

A01120



Agilent Technologies