

Ammonia and amines

Application Note

Materials Testing & Research

Authors

Agilent Technologies, Inc.

Introduction

Gas chromatography with an Agilent PoraPLOT for Amines column separates ammonia and four very volatile amines in 12 minutes.



Agilent Technologies

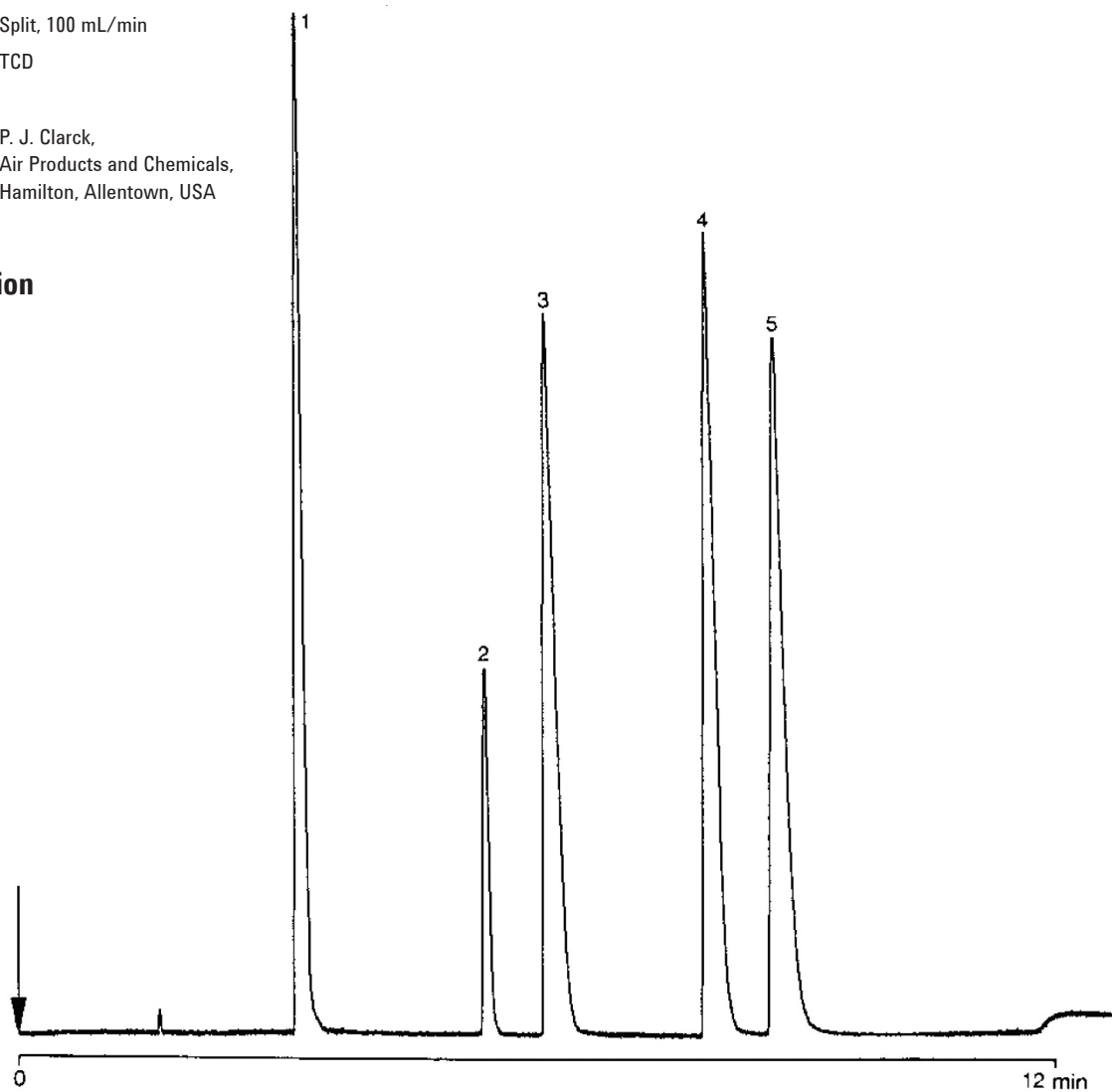
Conditions

Technique : GC-capillary
Column : Agilent PoraPLOT for Amines, 0.32 mm x 25 m fused silica PLOT PoraPLOT (df = 10 μ m)
(Part no. CP7591)
Temperature : 100 °C (3 min) \rightarrow 200 °C, 8 °C/min; 200 °C (5 min)
Carrier Gas : He
Injector : Split, 100 mL/min
Detector : TCD

Courtesy : P. J. Clark,
Air Products and Chemicals,
Hamilton, Allentown, USA

Peak identification

1. ammonia
2. dimethyl ether
3. monomethyl amine
4. dimethyl amine
5. trimethyl amine



www.agilent.com/chem

This information is subject to change without notice.

© Agilent Technologies, Inc. 2011

Printed in the USA

31 October, 2011

First published prior to 11 May, 2010

A00775



Agilent Technologies