



Permanent gases

Application Note

Environmental

Authors

Agilent Technologies, Inc.

Introduction

Gas chromatography with a custom-made Agilent CP-Molsieve 5Å column separates six permanent gases in 20 minutes.



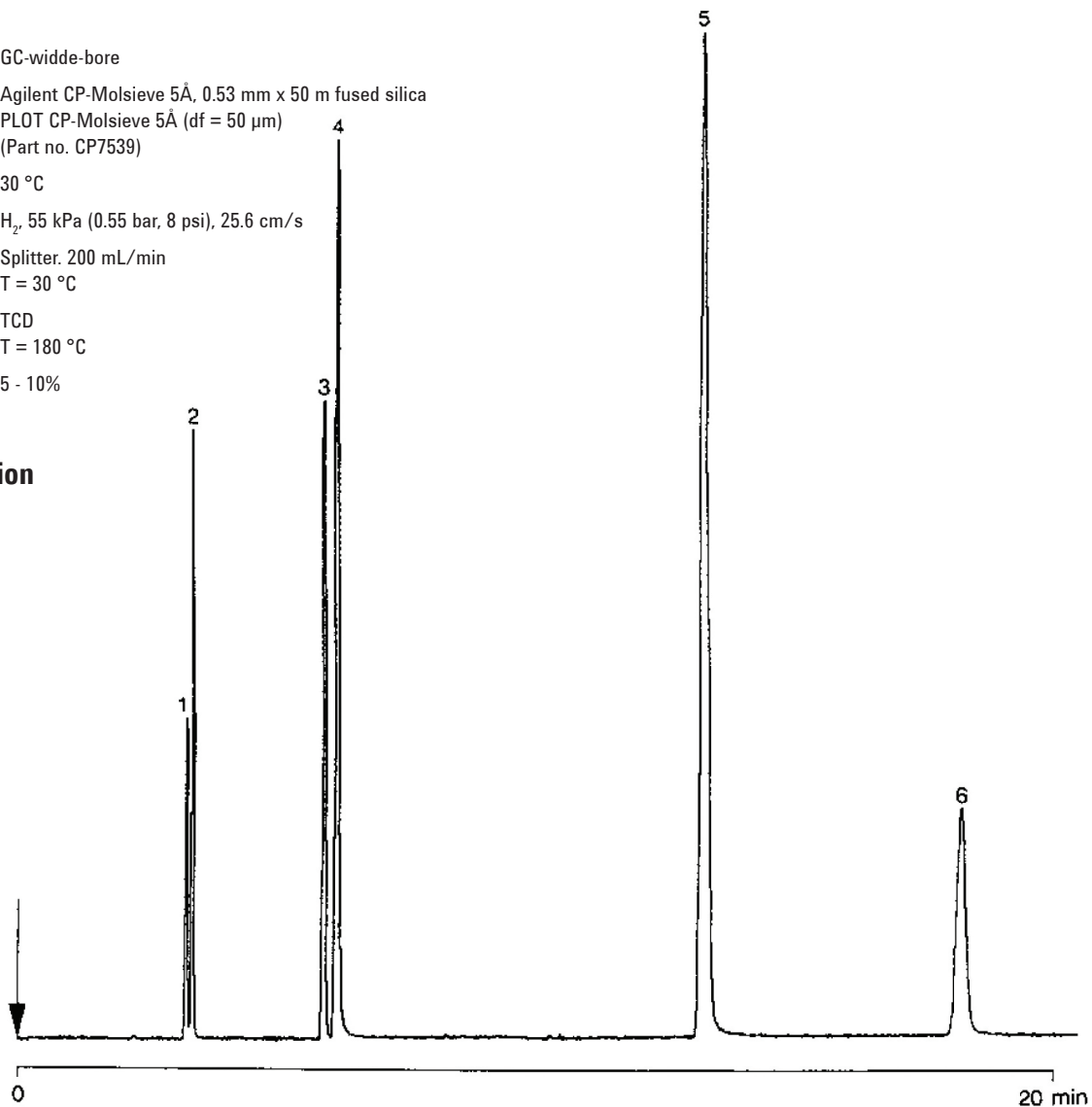
Agilent Technologies

Conditions

Technique : GC-wide-bore
Column : Agilent CP-Molsieve 5Å, 0.53 mm x 50 m fused silica
PLOT CP-Molsieve 5Å (df = 50 µm)
(Part no. CP7539)
Temperature : 30 °C
Carrier Gas : H₂, 55 kPa (0.55 bar, 8 psi), 25.6 cm/s
Injector : Splitter, 200 mL/min
T = 30 °C
Detector : TCD
T = 180 °C
Concentration Range : 5 - 10%

Peak identification

1. helium
2. neon
3. argon
4. oxygen
5. nitrogen
6. methane



www.agilent.com/chem

This information is subject to change without notice.

© Agilent Technologies, Inc. 2011

Printed in the USA

31 October, 2011

First published prior to 11 May, 2010

A00764



Agilent Technologies