



# Gases and water

## Application Note

Environmental

### Authors

Agilent Technologies, Inc.

### Introduction

Gas chromatography with an Agilent PoraPLOT Q column separates six gases in water solvents in five minutes.



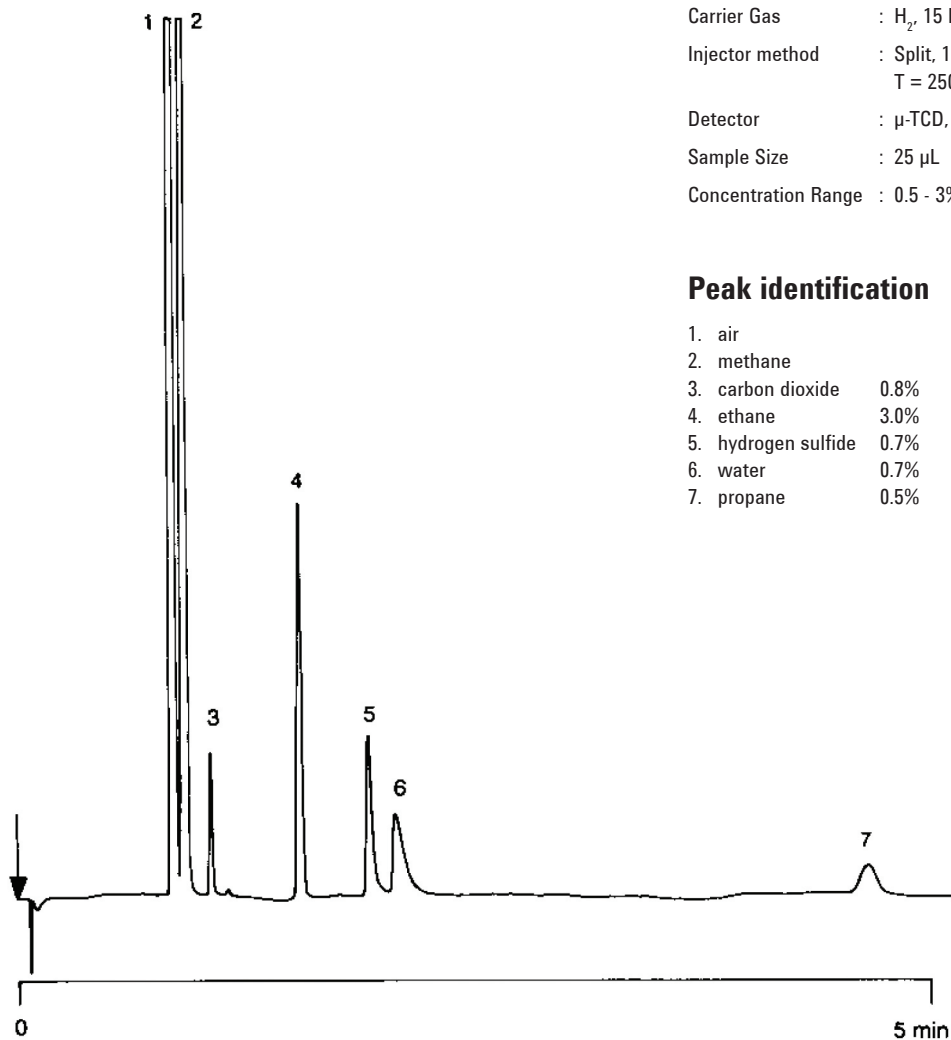
**Agilent Technologies**

## Conditions

Technique : GC-capillary  
Column : Agilent PoraPLOT Q, 0.32 mm x 10 m fused silica  
PoraPLOT Q (df = 10 µm) (Part no. CP7550)  
Temperature : 60 °C  
Carrier Gas : H<sub>2</sub>, 15 kPa (0.15 bar, 2.1 psi), 24 cm/s  
Injector method : Split, 100 mL/min  
T = 250 °C  
Detector : µ-TCD, Attn. 4x  
Sample Size : 25 µL  
Concentration Range : 0.5 - 3%

## Peak identification

1.	air	
2.	methane	
3.	carbon dioxide	0.8%
4.	ethane	3.0%
5.	hydrogen sulfide	0.7%
6.	water	0.7%
7.	propane	0.5%



[www.agilent.com/chem](http://www.agilent.com/chem)

This information is subject to change without notice.

© Agilent Technologies, Inc. 2011

Printed in the USA

31 October, 2011

First published prior to 11 May, 2010

A00439



**Agilent Technologies**