



Solvents, C₂ Analysis of water in ethanol

Application Note

Environmental

Authors

Agilent Technologies, Inc.

Introduction

Gas chromatography with an Agilent CP-PoraPLOT Q column identifies ethanol in water in five minutes.



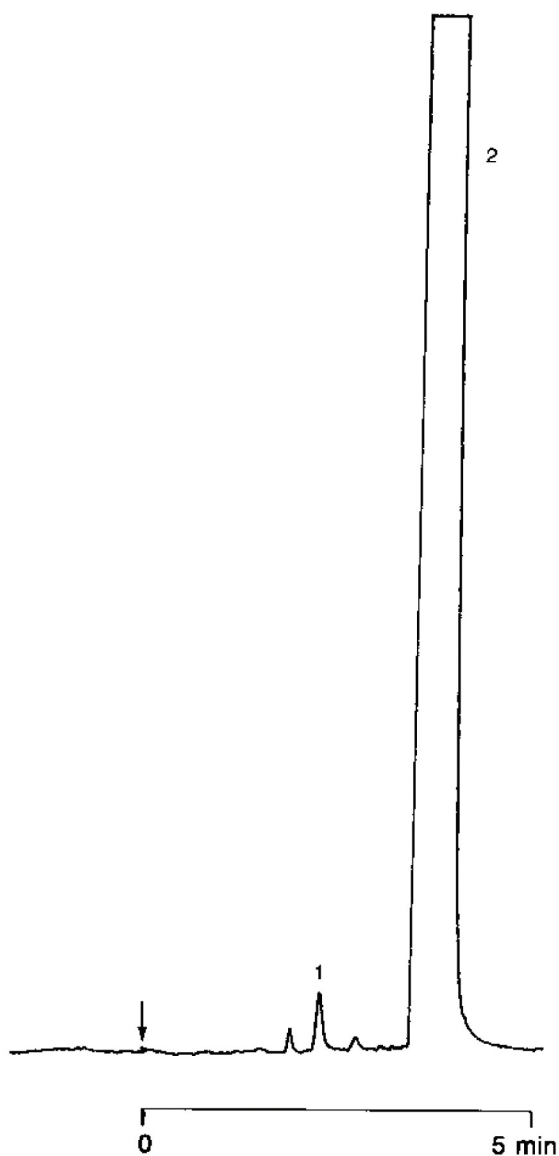
Agilent Technologies

Conditions

Technique : GC - capillary
Column : 0.32 mm x 10 m fused silica PorapLOT Q
(10 μ m) (Part no. 7550)
Temperature : 175 °C
Carrier Gas : H₂, 40 kPa (0.4 bar, 5.8 psi)
Injector : Splitter
Detector : μ TCD
Concentration range : 500 ppm

Peak identification

1. water
2. ethanol



www.agilent.com/chem

This information is subject to change without notice.

© Agilent Technologies, Inc. 2011

Printed in the USA

31 October, 2011

First published prior to 11 May, 2010

A00276



Agilent Technologies