

Online 2D-LC Characterization of Monoclonal Antibodies Using Protein A and Weak Cation Exchange Chromatography

Analysis of mAbs Using 2D-LC with High-Resolution Sampling

Suitable for Agilent
1290 Infinity III LC

Application Note

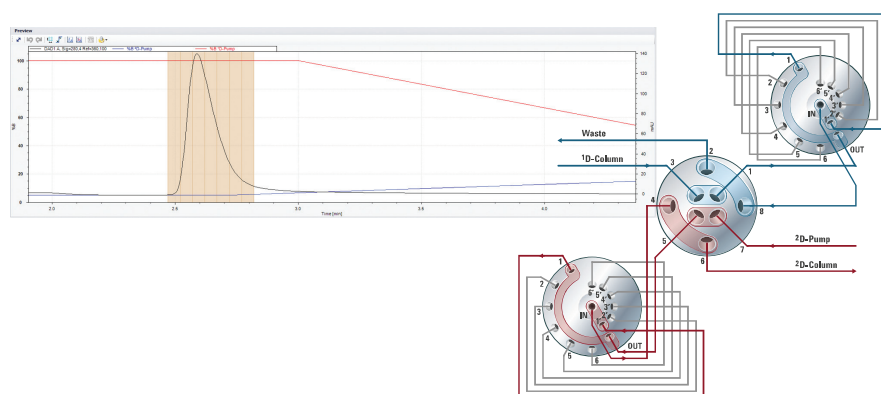
Biotherapeutics and Biologics

Author

Sonja Schneider
Agilent Technologies, Inc.
Waldbronn, Germany

Abstract

The characterization of biopharmaceuticals can be highly complex and extensive to evaluate all important quality attributes. Online 2D-LC analysis enables a combination of different analysis methods to monitor different parameters in one run. This Application Note shows a combination of protein A titer analysis in the first dimension followed by ion exchange chromatography for charge variant profiling. The setup using high-resolution sampling provides for highly precise analysis regarding retention time and area and enables time-saving and easy monitoring for process or quality control of monoclonal antibodies.



Agilent Technologies

Introduction

To ensure their safety and efficacy from triggering unpredictable immunogenic responses, detailed and in-depth characterization of biopharmaceuticals is of extreme importance. Different parameters must be monitored during various stages in the development and production of the product. In the early phases of process development especially, an enormous number of samples need to be screened. Those extensive studies include important quality attributes such as titer analysis, aggregation studies, charge variant and glycan profiling, peptide mapping, and many others. Due to the extent and complexity of the used methods, full characterization of biopharmaceuticals is an elaborate, time-consuming, and cost-intensive business.

The first step in the purification of monoclonal antibodies (mAbs) is generally protein A or G affinity chromatography. Protein A is a surface protein originally isolated from the bacterium *Staphylococcus aureus*, with a size of 56 kDa. Protein A binds to other immunoglobulin (Ig) G variants, with a high affinity to human IgG1. This is the most common and accepted technique for antibody purification¹. Using this type of purification usually results in a purity over 95 %. The purification efficiency is often verified with subsequent size exclusion (SEC) or ion exchange (IEX) chromatography.

The Agilent 1290 Infinity 2D-LC solution enables the online combination of two analysis types. Using multiple heart-cutting or high-resolution sampling 2D-LC, heart-cuts from the first dimension are stored in the 40-µL loops of two 6-position/14-port valves, for additional and expanding analysis in the second dimension^{2,3}. With this setup, different analyses that are of utmost importance in the characterization of biopharmaceuticals can be combined. Different combinations are possible, such as aggregation studies using SEC with charge profiling using IEX, or titer analysis using protein A affinity chromatography with SEC or IEX.

In addition to the two classical 2D-LC modes: (multiple) heart-cutting and comprehensive 2D-LC, acting complementary to each other, high-resolution sampling 2D-LC combines advantages of both heart-cutting and comprehensive 2D-LC. Up to 10 consecutive cuts can be defined for the first dimension with the same valve setup that is also used for multiple heart-cutting 2D-LC. High-resolution sampling can be helpful, especially in biochromatography such as affinity chromatography SEC or IEX, by enabling the analysis of larger areas of interest or broad unresolved peaks in the first dimension. It retains the resolution gained in the first dimension, and allows long runs in the second dimension. As an alternative, 2D-LC users have cut large peaks in a single large loop instead of multiple small sample loops, leading to several disadvantages such as the loss of the 1D resolution and overloading of the second-dimension column⁴.

If desired, high-resolution sampling also delivers precise and reproducible 2D-LC quantification due to the option of transferring the entire 1D peak area to the second dimension. The Agilent 2D-LC software automatically groups consecutive cuts, and sums the peak areas of all compounds with similar retention in the second dimension.

This Application Note shows the combination of titer analyses using protein A affinity chromatography in combination with weak cation exchange (WCX) to check for coeluting impurities, and for subsequent charge variant profiling for an mAb.

Experimental

Instrumentation

The Agilent 1290 Infinity II 2D-LC Solution was comprised of the following modules:

- **First-dimension pump:**
Agilent 1260 Infinity Bio-Inert Quaternary Pump (G5611A)
- **Second-dimension pump:**
Agilent 1290 Infinity II High-Speed Pump (G7120A)
- Agilent 1290 Infinity II Multisampler (G7167B) with cooler
- Agilent 1290 Infinity II Multicolumn Thermostat (G7116B)
- Agilent 1290 Infinity Valve Drive (G1170A) with 2-position/4-port duo-valve (2D-LC) valve head, G4236A)
- 2x Agilent 1290 Infinity Valve Drives (G1170A) with 2x multiple heart-cutting valves (G4242-64000) equipped with 40-µL loops
- 2x Agilent 1290 Infinity II Diode Array Detectors (G7117B) with 10-mm Max-Light cartridge cells (G4212-60008)

Columns

- Agilent Bio-Monolith Column Protein A (p/n 5069-3639)
- Agilent Bio mAb, NP5, PK Guard, nonporous, 2.1 x 50 mm, 5 µm, PEEK (p/n 5190-2412)

Software

Agilent OpenLAB CDS ChemStation Edition software, version C.01.07 [27] with Agilent 1290 Infinity 2D-LC software, version A.01.03

Solvents and samples

All solvents used were LC grade. Fresh ultrapure water was obtained from a Milli-Q Integral system equipped with a 0.22- μ m membrane point-of-use cartridge (Millipak). Phosphate buffered saline (PBS), acetic acid, ammonium formate, *E. coli* cells, and the CellLytic B Plus Kit were purchased from Sigma-Aldrich, St. Louis, MO, USA.

A monoclonal antibody solution was injected as pure solution in PBS (10 mg/mL) and, as well, injected after dilution into *E. coli* lysate (200 μ L of the mAb solution was spiked into 1 mL of *E. coli* lysate). The samples were filtered using an Agilent Captiva Premium Syringe Filter, regenerated cellulose membrane, 15 mm diameter, 0.45- μ m pore size (p/n 5190-5109).

Chromatographic conditions

Table 1. Chromatographic conditions for high-resolution sampling 2D-LC analysis using protein A and WCX.

Parameter	Value
First-dimension parameters	
1D column	Agilent Bio-Monolith Column Protein A
1D mobile phase	A) PBS, pH 7.2 B) 500 mM acetic acid, pH 2.6
1D flow rate	0.5 mL/min
1D gradient	0 minutes – 100 %A, 0 %B 0.5 minutes – 100 %A, 0 %B 1.5 minutes – 0 %A, 100 %B 3 minutes – 0 %A, 100 %B 6 minutes – 100 %A, 0 %B
Injection volume	2 μ L (pure mAb) and 10 μ L (mAb spiked in <i>E. coli</i>)
Second-dimension parameters	
Mode	High-resolution sampling
2D column	Agilent Bio mAb
2D mobile phase	A) 20 mM ammonium formate, pH 6.2 B) 500 mM ammonium formate, pH 6.2
2D gradient stop time	6 minutes
2D cycle time	10 minutes
2D flow rate	0.5 mL/min
2D gradient	0.00 minutes – 5 %B 5 minutes – 35 %B 6 minutes – 40 %B
Injection volume	2 μ L (pure mAb) and 10 μ L (mAb spiked in <i>E. coli</i>)
Thermostat autosampler	6 °C
Column temperature	Room temperature
DADs	280 nm, 4 nm, Ref. 360 nm, 100 nm
Peak widths	0.025 minutes (0.5 second response time) (10 Hz)

Results and Discussion

A monoclonal antibody was analyzed using the Agilent Bio-Monolith Protein A column in the first dimension. Based on the retention time and the peak shape, a high-resolution 2D-LC method was set up, cutting the relatively broad peak eluting from the monolith protein A column in seven parts. Using the preview option in

the 2D pump setup, a previously recorded first-dimension chromatogram was loaded, and the high-resolution method was set up. In the 2D pump setup, the set of cuts was defined, and was positioned in the 1D chromatogram by dragging the high-resolution region over the eluted peak (Figure 1). The pale orange bars on the chromatogram mark the 1D retention

time range where the peaks are sampled by the high-resolution sampling.

Figure 2 shows the results of the high-resolution 2D-LC analysis presented in the 2D-LC Viewer. The first-dimension protein A analysis is shown, resulting in a broad peak, eluting between 2.5 and 3 minutes.

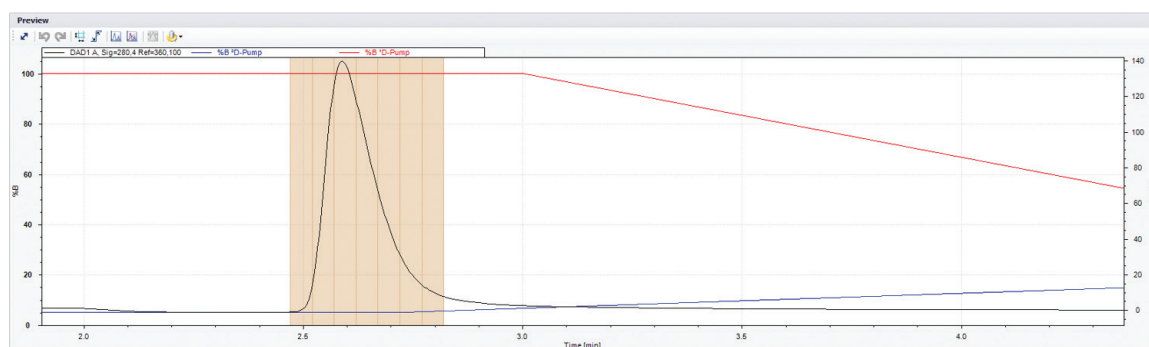


Figure 1. 2D pump setup (zoomed view into the 1D chromatogram). The pale orange bars mark the 1D retention time range of the high-resolution sampling. The set of peaks can be easily dragged over the elution area of the 1D peak.

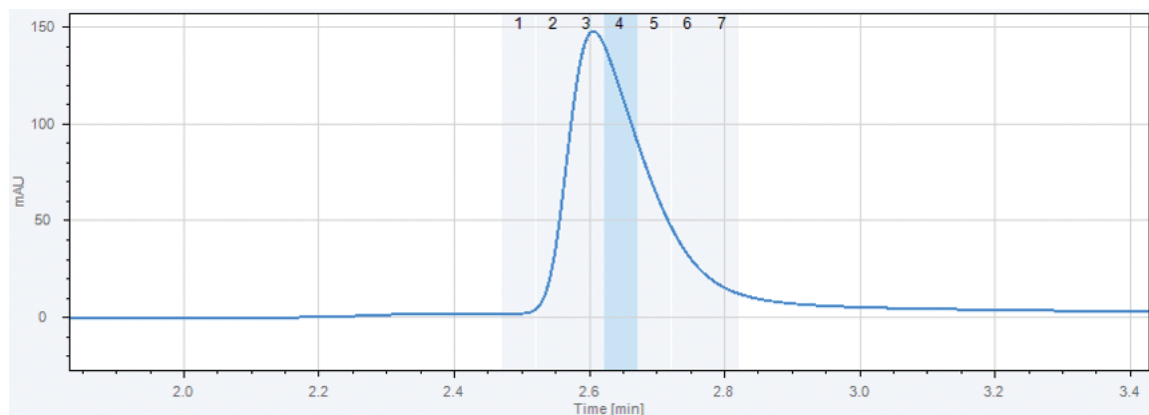


Figure 2. 2D-LC analysis with protein A titer analysis in the first dimension, showing the chosen set of cuts.

Depending which cut is currently marked in the full 2D chromatogram, the single 2D chromatograms are displayed in a separate window for a more detailed view (Figure 3). The 2D peak table (Figure 3) shows the integrated peaks of the 2D chromatogram that can be

selected individually, and appear as blue integration areas. The charge variant pattern of the mAb revealed two additional peaks in front of the main peak, representing two acidic variants of the mAb. Acidic and basic species are defined based on their retention times

relative to the main peak. The variants eluting prior to the main peak in cation exchange chromatography are defined as acidic, whereas the variants eluting later than the main peak are defined as basic³.

A

Peak table (2D)						
Cut # /	2D Retention time [min]	Area	Height	Width	Symmetry	
Compound: 3						
4	2.946	78.259	9.293	0.115	1.494	
		78.259				
Compound: 4						
4	3.184	250.323	17.263	0.188	0.424	
		250.323				
Compound: 5						
4	2.706	16.746	1.827	0.123	2.747	
		16.746				

B

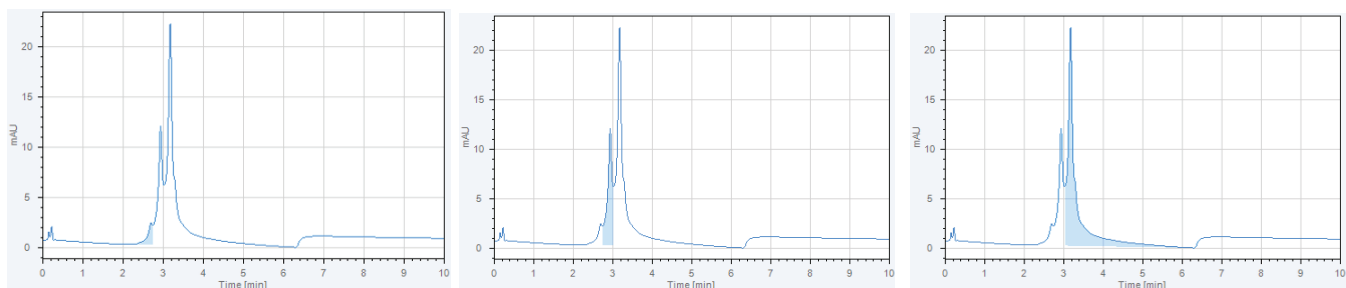


Figure 3. 2D peak table and 2D chromatogram of cut 4. Three peak areas are integrated after charge variant analysis. In the 2D peak table, the peaks can be selected, and the integration is displayed accordingly (blue area).

Precision of retention time and area was determined in the first and second dimension for six consecutive injections of the mAb. In the first dimension, only one peak was evaluated, whereas three peaks were determined in the second dimension: 1 main (compound 4) and

two acidic variants (compounds 3 and 5). Cut 4 was evaluated, representing the complete set of cuts. Figure 4 shows an overlay of six consecutive runs in the 2D-LC Viewer for the first and second dimension together with the precision values for retention time and peak area.

For the first dimension, the retention time and area precision was excellent, with 0.08 and 0.8 %, respectively. The second-dimension precision for retention time and area was also good, with <0.25 and <1.5 %, respectively.

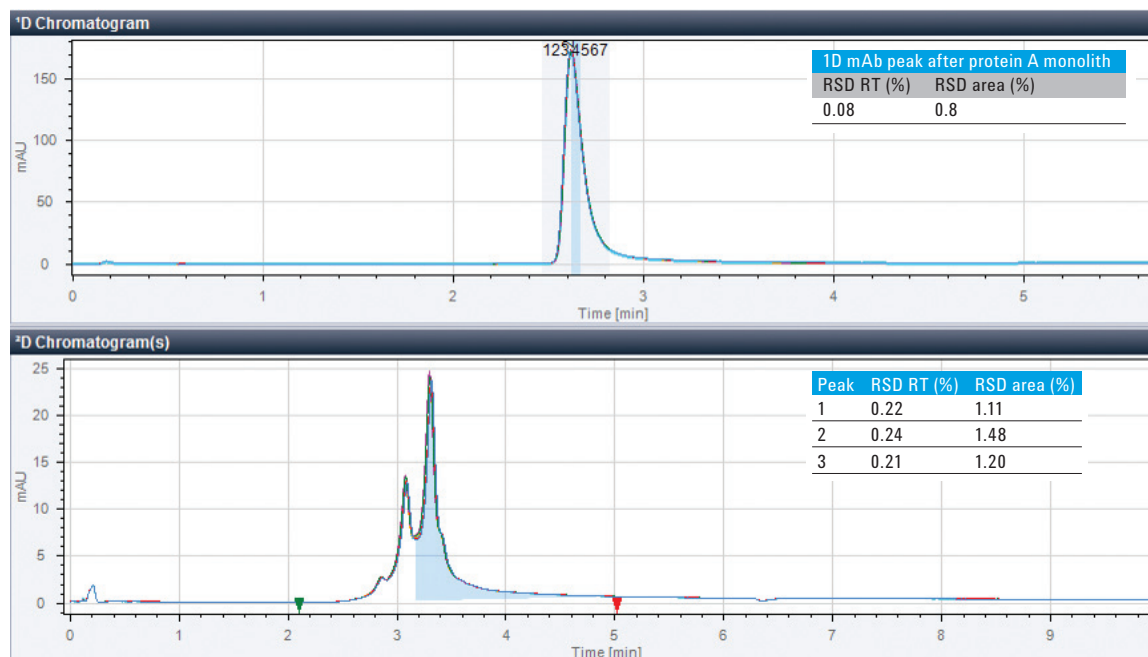


Figure 4. Overlay of six consecutive 2D-LC runs.

Mimicking a cell lysate mAb process control sample, the used mAb was spiked into an *E. coli* lysate, filtered, and injected into the 2D-LC system to check for coeluting impurities. Figure 5 shows both the 1D and 2D chromatograms in the 2D-LC viewer. The *E. coli* lysate is not retained on the protein A monolith and elutes with the dead time at the beginning of the chromatogram. The mAb is retained on the column, and elutes between 2.5 and 3 minutes (same as in Figure 2). The charge pattern was found to be identical to the pattern found in the purely injected mAb.

Conclusion

Protein A titer analysis and weak cation exchange chromatography for charge variant analysis were combined using the Agilent 1290 Infinity 2D-LC solution for the analysis of mAbs. Due to the elution profile and peak shape of mAb after protein A analysis, resulting in one relatively broad peak, a high-resolution 2D-LC method was set up. A set of seven cuts was defined over the peak from the first dimension. The seven cuts were analyzed for coeluting impurities, and the mAb charge variant pattern in the second dimension revealed no coelution, but two

acidic variants and one main peak for the mAb. The high-resolution 2D-LC method was evaluated for retention time and area precision for six consecutive runs, revealing highly precise chromatographic performance for the first and second dimension. In addition, a process control sample was mimicked by spiking the mAb sample into an *E. coli* lysate as a cell lysate surrogate. The elution from the first-dimension protein A monolith as well as the charge profiling in the second dimension were found to be comparable to the purely injected mAb, with no coeluting impurities under the protein A peak.

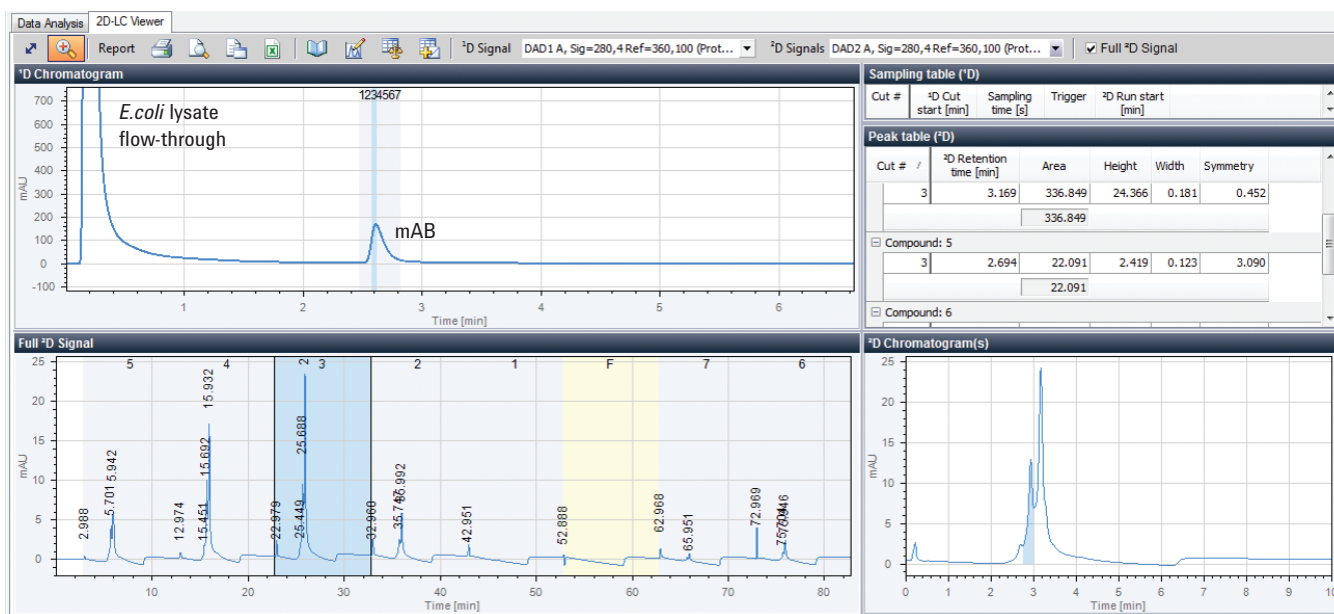


Figure 5. 2D-LC chromatograms of the mAb spiked into the *E. coli* lysate. The 1D chromatogram shows the protein A analysis with the *E. coli* lysate flow-through at the beginning of the chromatogram, and the mAb eluting between 2.5 and 3 minutes. The charge variant analyses are displayed in the full 2D signal (bottom left) as well as the single 2D chromatograms (bottom right).

References

1. Low, D.; *et al.* Future of antibody purification. *J. of Chromatog. B* **2007**, *848*, 48–63.
2. *Access Agilent Newsletter*, **August 2014**, <https://www.agilent.com/en-us/newsletters/accessagilent/2014/aug/2dlcheart?cid=9634>
3. Buckenmaier, S. Agilent 1290 Infinity 2D-LC Solution for Multiple Heart-Cutting, *Agilent Technologies Application Note*, publication number 5591-5615EN, **2015**.
4. *Access Agilent Newsletter*, **March 2016**, <http://www.agilent.com/en-us/newsletters/accessagilent/2016/mar/2D-LChrs?cid=12822>
5. Du, Y.; *et al.* Chromatographic analysis of the acidic and basic species of recombinant monoclonal antibodies. *MAbs* **Sep 1, 2012**, *4(5)*, 578–585.

www.agilent.com

DE91391156

This information is subject to change without notice.

© Agilent Technologies, Inc., 2016–2024
Published in the USA, October 15, 2024
5991-6848EN



Agilent Technologies