

使用气相色谱/火焰离子化检测器对饮用水中的环氧氯丙烷进行痕量分析

Application Note

Gas Chromatography/Environmental

Author

Min Cai and Yun Zou
Agilent Technologies (Shanghai) Co.Ltd
412 YingLun Road
Waigaoqiao Free Trade Zone
Shanghai 200131 P.R.China

Abstract

本文提出了一种可以快速、经济、灵敏和可靠地测定饮用水中环氧氯丙烷 (ECH) 含量的方法。经二氯甲烷萃取后, 通过 K-D 浓缩器对痕量水平的 ECH 进行快速富集。然后使用配有安捷伦 J&W DB-5ms 超高惰性色谱柱的 Agilent 7890A GC 系统对 ECH 进行分析。校准曲线在 0.08-1.60 纳克范围内呈线性, 相关系数大于 0.9997。ECH 在 1.0 和 5.0 $\mu\text{g/L}$ 加标水平下的回收率分别为 104.7% 和 107.0%。ECH 重现性的 RSD 值低于 2.21%。检测限低于 0.07 $\mu\text{g/L}$, 低于欧盟对饮用水中 ECH 的规定最大残留限量 (MRL) 0.1 $\mu\text{g/L}$ 。



Agilent Technologies

Introduction

Epichlorohydrin (ECH), 1-chloro-2,3-epoxypropane, is a raw material used in the production of epoxy resins, synthetic glycerol, elastomers, paper, and pharmaceuticals [1-2]. ECH can enter drinking water supplies by leaching from epoxy resin coatings on pipes or through flocculating agents in water treatment. As a result of its widespread use, low concentrations of ECH in wastewater, ground water and surface water have been observed. Toxicological studies show that ECH has severe acute and chronic toxic effects on humans. Therefore, ECH is listed among chemicals that must be monitored because of its effect on human health. According to the European Council Directive 98/83/EC on the quality of waters intended for human consumption, its acceptable limit in drinking water is 0.1 µg/L [3].

The main analytical methods available for epichlorohydrin quantification in water include gas extraction techniques, such as static headspace (HS), dynamic headspace – purge and trap (P&T) GC with mass spectrometric, flame ionization, or electron-capture detection. L. Lucentini, and colleagues [6] developed a method based on GC-ECD for ECH in drinking water samples with static headspace (LOD = 40µg/L) and purge and trap (P&T) (LOD = 0.01 µg/L). The LOD (40 µg/L) for static headspace cannot meet the EU regulation requirement. P&T is a sensitive, simple and rapid method; however, it requires some automatic equipment, which makes it an expensive option.

A method for ECH determination by ion chromatography has been developed. The technique is based on the reaction between an analyte and sulfur (IV) to form a product with a terminal sulfonate group that can be analyzed by anion-exchange chromatography [7,8]. The method (LOD = 0.07 µg/L) is, however, cumbersome and time consuming and requires a derivatization step.

An economic, reliable, sensitive, and robust analytical method is needed for the analysis of ECH in drinking water samples (LOD<0.1 µg/L). The problem with the analysis of ECH in water samples arises from its high solubility in water (66 g/L), volatility and polar character [4]. In this application, a classical extraction technique, liquid-liquid extraction followed by K-D concentration was used for the sample preparation. Compared with other concentrate techniques, K-D concentrator is suitable for evaporating the solvent with less analyte loss.

Column inertness is crucial for the analysis of active compounds such as ECH. If a column lacks inertness, it will exhibit severe peak tailing, and response loss leading to inaccurate quantification. The Agilent J&W Ultra Inert column has the

most consistent column inertness. It gives better sensitivity and peak shape for active compounds and reliable results for trace level analysis. In this paper, a 10-m length minibore, 0.18 mm id capillary Agilent J&W DB-5ms Ultra Inert column was used to determinate ECH in drinking water by GC/FID.

Experimental

Instrument

An Agilent 7890A GC System equipped with a split/splitless capillary inlet and flame ionization detector (FID) was used for this work. The split/splitless inlet was fitted with a long-life-time septa (p/n 5183-4761) and split liner (single taper, p/n 5183-4647). Injections were done using 10 µL syringes (p/n 9301-0714).

Table 1. Gas Chromatography Conditions

Column	Agilent J&W DB-5ms Ultra Inert, 10 m*× 0.18 mm, 0.36 µm (p/n 121-5523UI)
Carrier Gas	Helium, constant flow mode, 1.5 mL/min
Inlet	Pulsed split 24.6 psi at 250 °C, split 5:1
Oven Temp	30 °C (1 min); 20 °C/min to 100 °C (2 min)
Detector	FID at 260 °C
Detector Gas	H ₂ 30 mL/min, air 400 mL/min, makeup (N ₂) 25 mL/min
Injection Size	4 µL

*The 10-m length capillary column was cut from a 20-m length column.

Standard solution

ECH stock solutions (1000 mg/L) in methanol were purchased from China National Standards Research Center. Five calibration standard solutions were prepared by diluting the stock solution with methylene chloride. The calibration standard solutions were stored in tightly sealed bottles below 5 °C.

Sample preparation

A 200 mL amount of water sample and 10 g sodium chloride (NaCl) were transferred into a 500-mL separatory funnel. After complete dissolution of NaCl, 10 mL of methylene chloride were added. The separatory funnel was sealed and then shaken vigorously for 1–2 minutes with periodic venting to release excess pressure. After the funnel was still for 10 minutes, the extract for the organic layer was collected. The extraction was repeated twice using fresh portions of solvent. The resulting three portions of the extracts were combined into a K-D tube. The K-D tube was quickly placed in a K-D concentrator to evaporate the solvent to near dryness. The residue was dissolved with 1 mL of methylene chloride and transferred into the sample vial for GC analysis.

Results and Discussion

Figure 1 shows the chromatogram of ECH (0.08 ng on-column). As illustrated, on the 10-m length (0.18 mm id) DB-5ms Ultra Inert capillary column, ECH can be eluted from the column in less than 2 min, with a symmetrical peak shape.

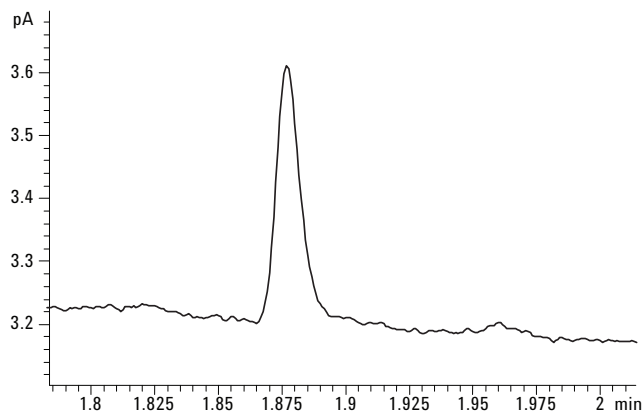


Figure 1. Chromatogram of ECH on an Agilent J&W DB-5ms Ultra Inert column.

Linearity

Figure 2 shows the calibration curve for ECH in the study. It was constructed from data obtained from five levels of standards. ECH exhibits a wide linear range from 0.08 ng to 1.60 ng with r^2 value higher than 0.9997.

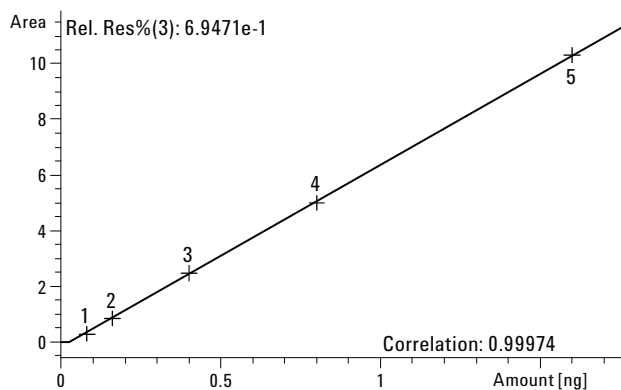


Figure 2. Calibration curve for ECH.

Recovery and Limit of Detection (LOD)

Table 2 presents the recoveries for spiked water samples. Blank samples of 200 mL were spiked with ECH at 1 $\mu\text{g/L}$ and 5 $\mu\text{g/L}$. During the study, the local drinking water was free from ECH contamination, and the analysis had no impurity interferences (Figure 3). It was regarded as a blank sample. The spiked samples were treated according to the procedure described in the sample preparation. Excellent recoveries were obtained, with the average values of 104.7% and 107.0%. Figure 4 shows the triple analysis of 1 $\mu\text{g/L}$ spiked water samples with good reproducibility and RSD at 2.21%.

Table 2. Recovery and Reproducibility of the Method

	Recovery (%)	
	1 $\mu\text{g/L}$	5 $\mu\text{g/L}$
1	102.0	106.8
2	106.2	104.9
3	105.8	109.2
Avg	104.7	107.0
RSD (%)	2.21	2.01

The Limits of Detection were determined at a signal-to-noise ratio of 3. The developed method enables quantitative determination of ECH in water solutions at concentration levels lower than 0.07 $\mu\text{g/L}$, which is lower than the MRL of the European Union (0.1 $\mu\text{g/L}$) in drinking water.

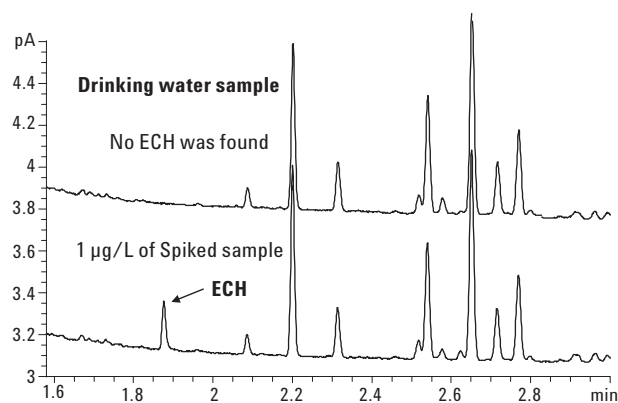


Figure 3. Comparison of blank sample and 1 $\mu\text{g/L}$ of spiked sample.

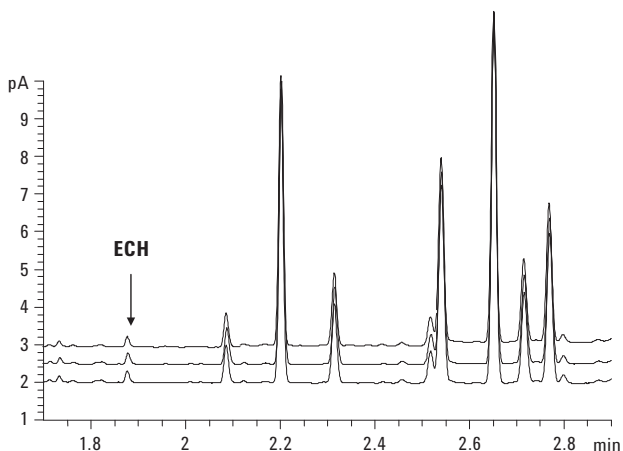


Figure 4. Triple analysis of 1 µg/L of spiked sample.

Conclusions

This application describes a rapid, economic, sensitive and reliable method for the quantification of trace level ECH in drinking water samples. The method provides good linearity, repeatability, and high recovery. It is applicable for determining ECH at trace levels in drinking water. It is also useful for routine laboratory activities, both for control and research.

Reference

- 1 H. Hinds Landin, T. Grummt, C. Laurent, A. Bates, "Monitoring of Occupational Exposure to Epichlorohydrin by Genetic Effects and Hemoglobin Adducts", *Mutation Research/Fundamental and Molecular Mechanisms of Mutagenesis*, Volume 381, Issue 2, 28 November 1997, pp 217-226.

- 2 United States Environmental Protection Agency, Office of Water, Fact Sheet, last revised 26 Nov. 2002. Internet address: <http://www.epa.gov/OGWDW/dwh/c-voc/epichlor.html>.
- 3 Council Directive of November 1998, *Official Journal of the European Communities*, 5 December 1998, no. 330/32.
- 4 H.J. Neu, R. Sprenger, *Fresenius J. Anal. Chem.* 359 (1997) 285.
- 5 J. Gaca, G. Wejnerowska, "Determination of Propane Chloroderivatives in Environmental Samples," *Analytica Chimica Acta*, Volume 540, Issue 1, 17 May 2005, pp 55-60.
- 6 L. Lucentini, E. Ferretti, E. Veschetti, V. Sibio, G. Citti, M. Ottaviani, "Static Headspace and Purge-and-Trap Gas Chromatography for Epichlorohydrin Determination in Drinking Water," *Microchemical Journal*, Volume 80, Issue 1, April 2005, pp 89-98.
- 7 M. C. Bruzzoniti, S. Andresek, M. Novic, D. Perrachon, C. Sarzanini, "Determination of Epichlorohydrin by Sulfite Derivatization and Ion Chromatography: Characterization of the Sulfite Derivatives by Ion Chromatography–Mass Spectrometry," *Journal of Chromatography A*, Volume 1034, Issues 1-2, 23 April 2004, pp 243-247.
- 8 C. Sarzanini, M.C. Bruzzoniti, E. Mentasti, "Determination of Epichlorohydrin by Ion Chromatography," *Journal of Chromatography A*, Volume 884, Issues 1-2, 7 July 2000, pp 251-259.

For More Information

For more information on our products and services, visit our Web site at www.agilent.com/chem.

www.agilent.com/chem

Agilent shall not be liable for errors contained herein or for incidental or consequential damages in connection with the furnishing, performance, or use of this material.

Information, descriptions, and specifications in this publication are subject to change without notice.

© Agilent Technologies, Inc., 2010
 Printed in the USA
 September 15, 2010
 5990-6433EN



Agilent Technologies