

Agilent Media Event at the AACR Annual Meeting 2026

Precision · Partnership · Purpose





This Evening's Agenda

7:00 Introduction

7:10 Rita Shaknovich, MD, PhD
Chief Medical Officer, Agilent

7:30 John Wojcik, MD, PhD
Associate Vice President, Head
Translational Biomarkers, Merck

7:45 Nathan Fowler, MD
Chief Medical Officer, BostonGene

8:00 Summary and closing

Agilent at AACR 2026

Every Day Counts
in the Race Against Cancer

Precision · Partnership · Purpose

Mark M. Garner, PhD
Director, Translational and Clinical Research Market
April 19, 2026



Agilent. Trusted Answers.

Agilent is a global leader in analytical and clinical laboratory technologies, providing **trusted answers** that help scientists and clinicians solve complex challenges—so they can bring **Great Science** to life.

Mission

To deliver **trusted answers** and insights to **advance the quality of life**

Vision

To innovate and deliver seamless solutions for our customers to **expand frontiers of science**



Powered by Partnership

Partnership isn't what we do, it's *who we are*

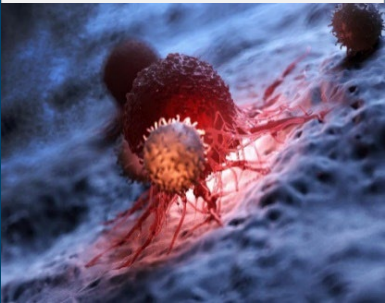
We are committed to meeting our customers' needs through open collaboration, tailored products and services, and a **shared mission to advance the quality of life.**



Partnering with Researchers and Clinicians Throughout the Cancer Continuum

Uncover

How cancer cells behave and avoid the immune system



Discover

The genetic changes which drive cancer



Translate

Advance your discoveries from basic to clinical research



Enable

The diagnosis with trusted pathology solutions



Deliver

Precision diagnostics to help guide therapeutic decision making



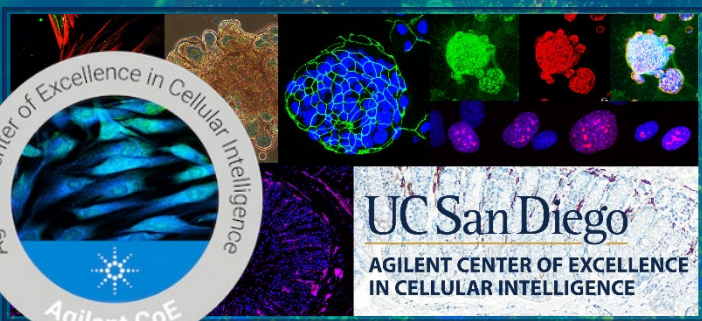
Fight

Drive cutting edge molecular and cellular therapies



Strategic Partnership

Enabling NAM workflows

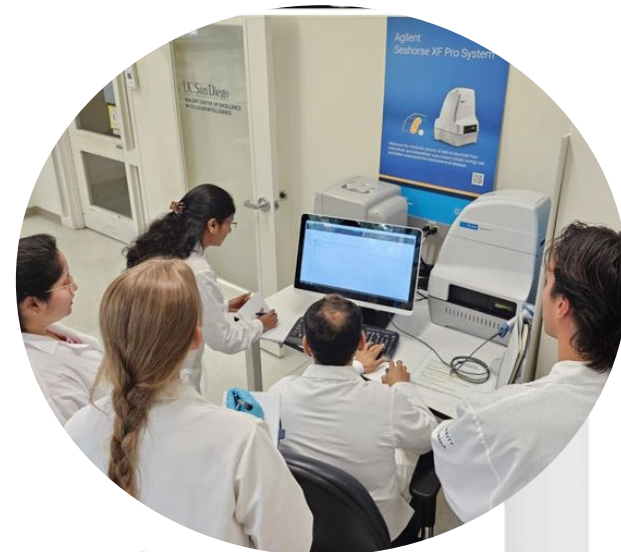


The **Agilent Center of Excellence (CoE) in Cellular Intelligence** represents a partnership that aligns the strategic visions of Agilent Technologies and the UC San Diego Institute for Network Medicine to enhance and modernize quantitative biology.

Solutions Across NAM workflows

- Regulators are accelerating expectations for Pharma to adopt New Approach Methodologies (NAMs). NAMs provide human-relevant, predictive efficacy and toxicity insights while reducing animal use.

The Agilent Center for Cellular Intelligence is accelerating the industry's transition to NAM-enabled workflows.



Seahorse XF Flex
Real-Time metabolism
studies to look at Drug
Response



Cytation 10 for confocal
imaging of 3-D samples
for toxicity studies




LC/Q-TOF systems to
look at metabolomics,
lipidomics, and
proteomic responses

Together Against Cancer

Solutions for cancer diagnostics

Rita Shaknovich MD, PhD
Chief Medical Officer
Life Sciences and Diagnostics Group
Agilent Technologies





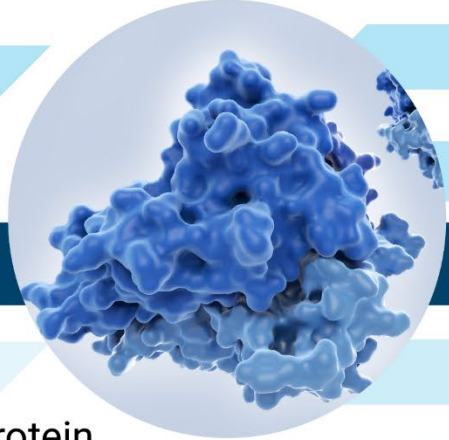
At Agilent, we understand that time counts when patients are awaiting their diagnostic results. The need for fast, accurate results is imperative for pathologists and clinicians to make confident diagnosis and treatment decisions for patients. That's why we are committed to supporting our customers in their lab with integrated workflow solutions and unparalleled expertise, so they can deliver accurate results in a timely manner.

Time Counts

Every cancer patient depends on accurate and timely answers

Discover a Multimodal Approach to Cancer Diagnostics

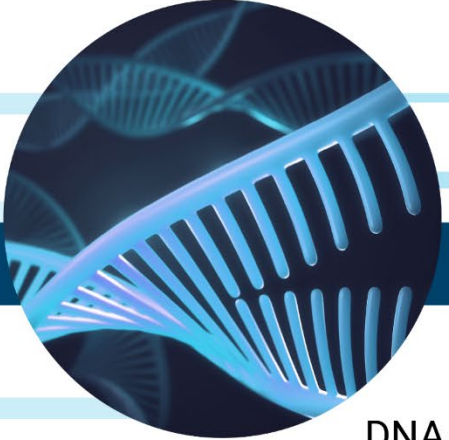
Agilent offers a comprehensive suite of adaptable solutions.
This multimodal portfolio enables labs to complete the diagnostic picture for patients, faster.



Protein
IHC



Chromosome
FISH



DNA/mRNA
NGS

Comprehensive

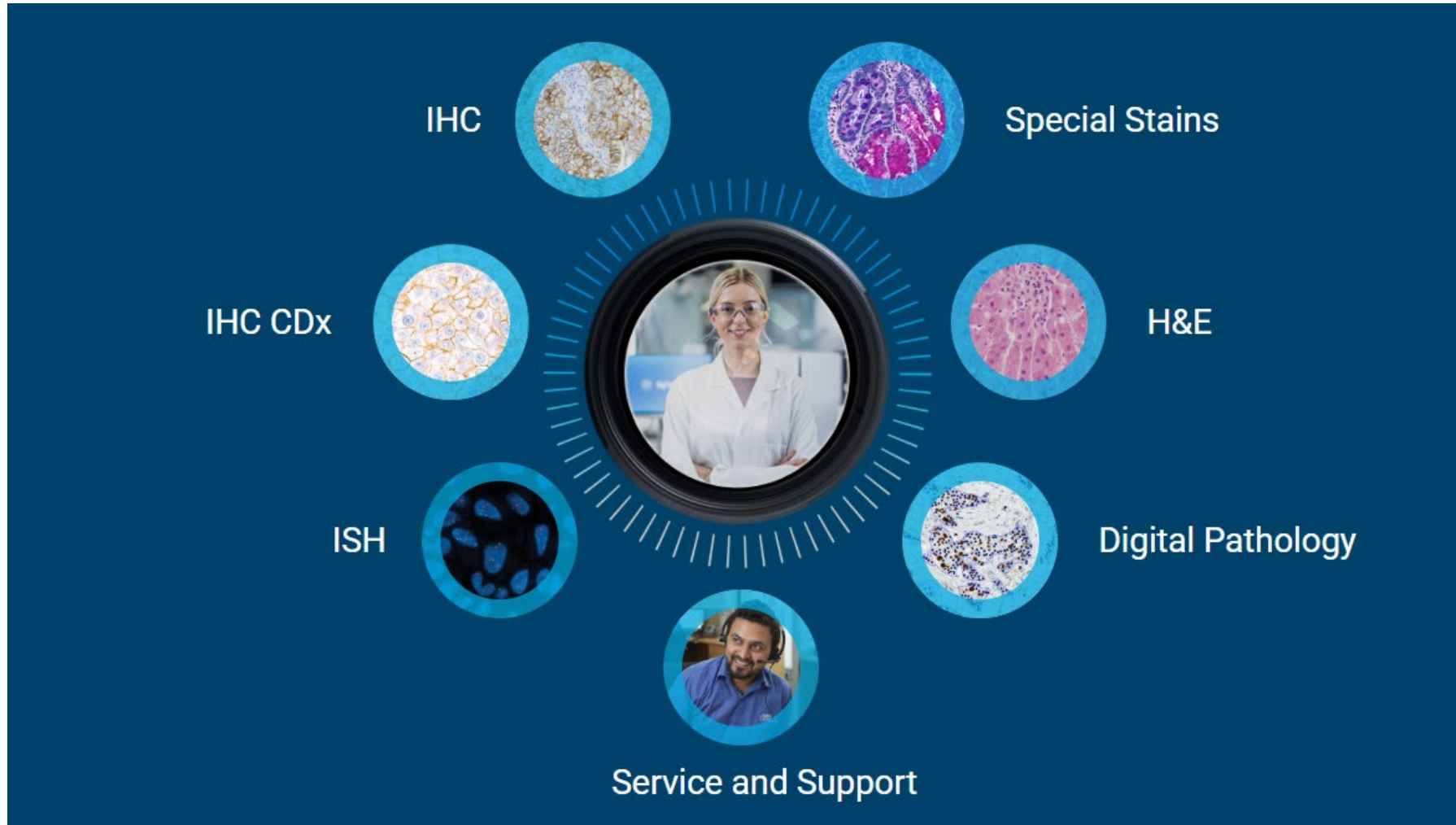
Accelerated

Flexible

Quality

Agilent Pathology Solutions

For End-to-End Workflows



Agilent Focus Areas in Pathology

To consolidate our position as a partner of choice for the Pathology Lab

Platform Extension



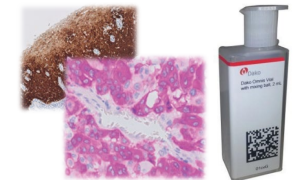
Dako Omnis Family of Instruments launched in August 2025 for incremental IHC and ISH workflow efficiency

Menu Expansion on Dako Omnis



Migration of CDx from Autostainer to Dako Omnis (PD-L1 IHC 22C3 PharmDx)

Menu expansion with new high-volume RTU antibodies on Dako Omnis



Strong CDx Development pipeline on Dako Omnis (Recently launched: MMR IHC Panel pharmDx)

Open and Flexible End-to-End Digital Pathology Solutions

In partnership with leading digital pathology suppliers

Agilent Digital Pathology

Digital Pathology Scanners

Hamamatsu range of
NanoZoomer® scanners

HAMAMATSU
PHOTON IS OUR BUSINESS

Image Management Systems

Concentriq® AP and AISight
AI-ready digital pathology platforms

 **PROSCIA**[®]

 PathAI

AI Image Analysis

Visiopharm and PathAI
AI-driven digital pathology applications

 **VISIOPHARM**[®]

 PathAI

Customer Enablement

Partnering with Customers to Enable Their Patient's Diagnosis

Medical Affairs Support

Committed to supporting pathologists with the insights and tools they need to make confident decisions — because behind every diagnosis is a patient whose life you help change



Dako Academy

Increases your confidence in tissue staining techniques and biomarker testing with a variety of trainings on the Agilent Dako pathology solutions



Application Support

Allows you to meet your application specific needs leveraging an experienced team of Field Application Specialists



Workflow Consultancy

Helps increase your lab efficiency by identifying areas of improvement and supporting the implementation of changes

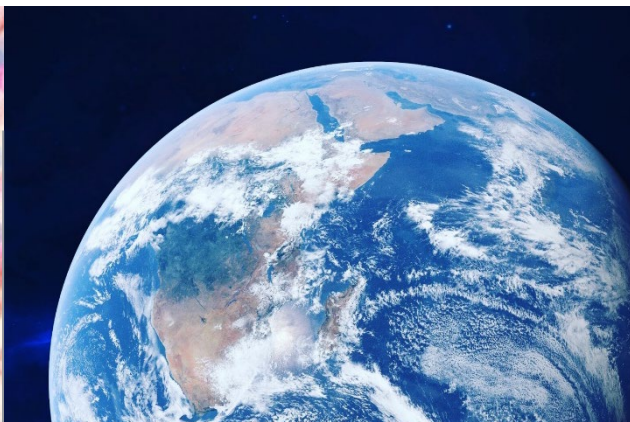
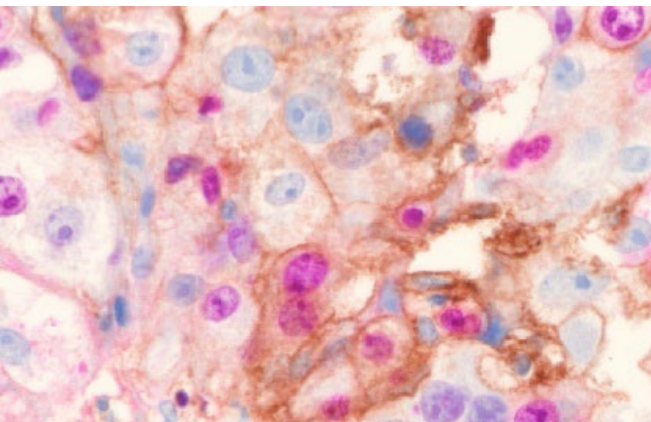


Partner with Precision

Agilent Companion Diagnostics Services



Proven Leadership in Companion Diagnostics for 25+ Years



1st

Targeted therapy CDx approved by FDA - HercepTest¹

1st

Immunotherapy CDx approved PD-L1 IHC 22C3 pharmDx²

94

Countries with access to an Agilent PD-L1 diagnostic kit²

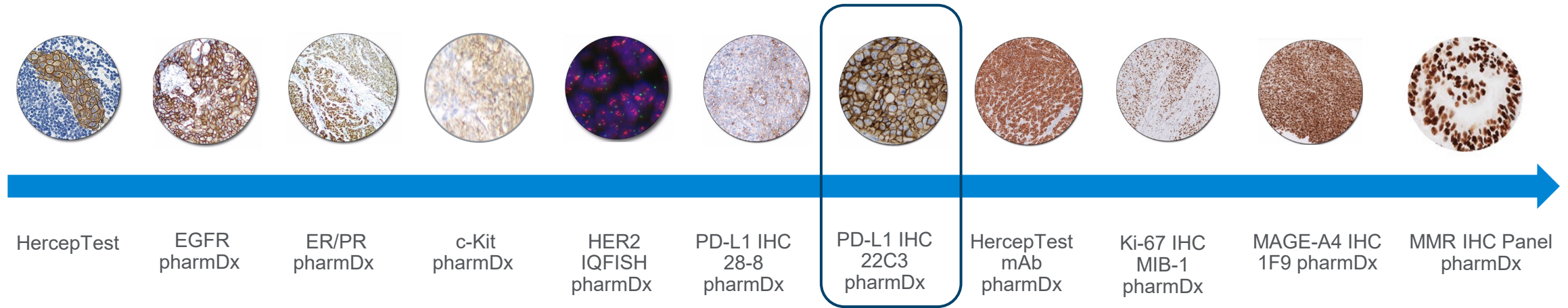
>7M

Tests Performed with Agilent CDx Assays Globally²

20+

Current CDx development programs

Agilent CDx Launches



Growing number of indications (eight)

Press Release

Agilent Receives FDA Approval for PD-L1 IHC 22C3 pharmDx in Epithelial Ovarian, Fallopian Tube, or Primary Peritoneal Carcinoma (EOC)

Approval expands PD-L1 testing to support treatment decisions with KEYTRUDA® (pembrolizumab) 1,2

SANTA CLARA, Calif., February 11, 2026

Press Release

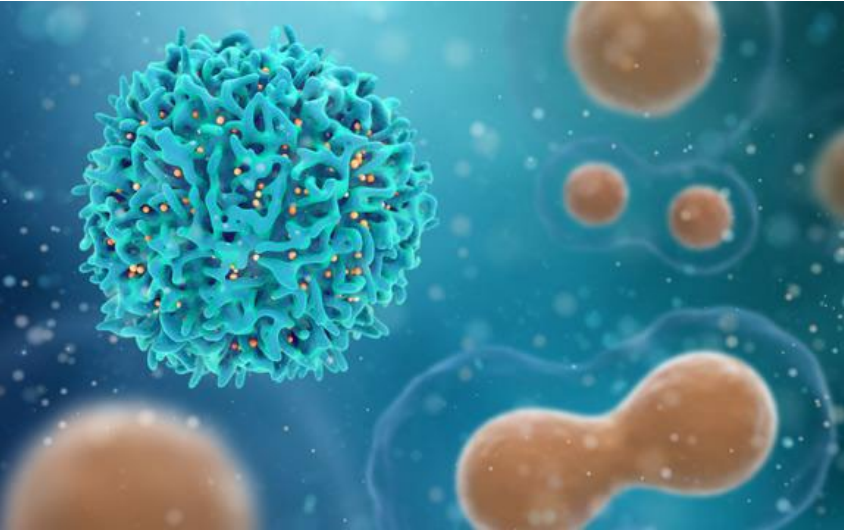
Agilent Receives FDA Approval for PD-L1 IHC 22C3 pharmDx in Esophageal or Gastroesophageal Junction (GEJ) Carcinoma

Test enables identification of patients whose tumors express PD-L1 for potential treatment with KEYTRUDA® (pembrolizumab) 1, 2

SANTA CLARA, Calif., March 26, 2026

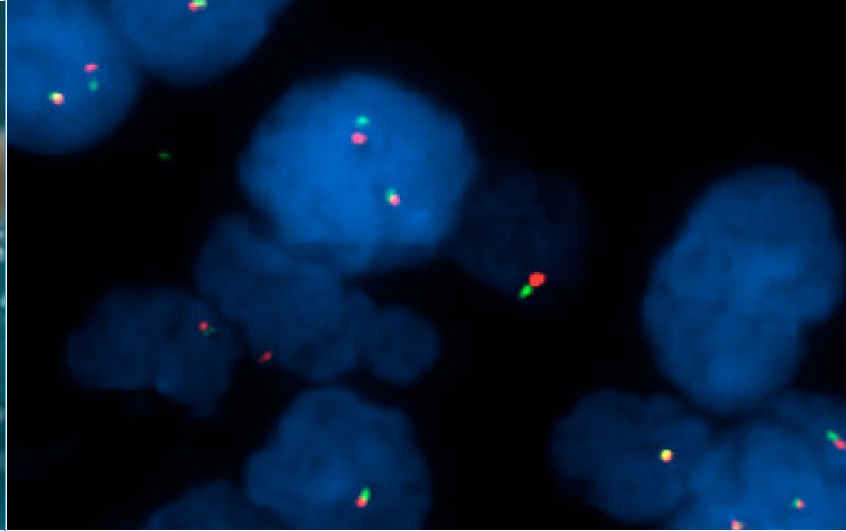
Not all assays are available in the US

Diverse CDx Development Programs



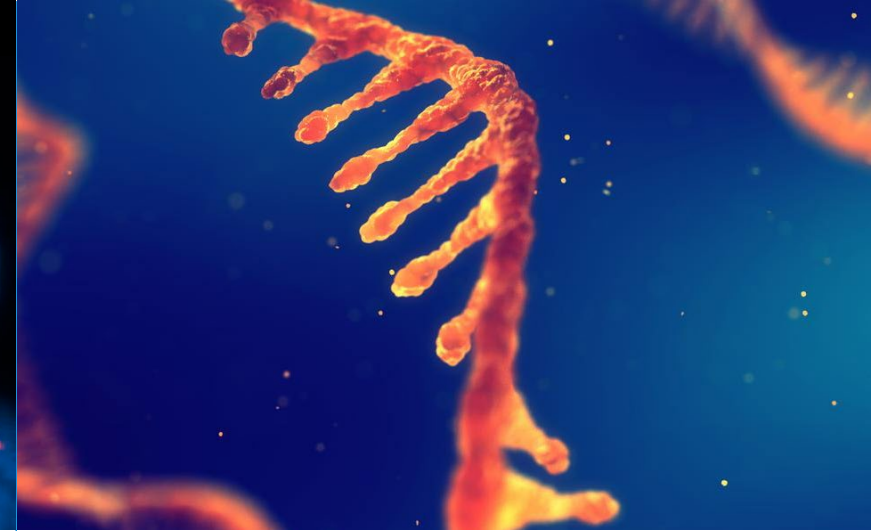
Developing CDx assays for diverse therapeutic approaches

- Multiple programs for ADCs
- Multiple programs for T-cell therapies
- Programs for rare diseases
- Immuno-oncology



CDx programs utilizing multiple technologies

- IHC
- FISH

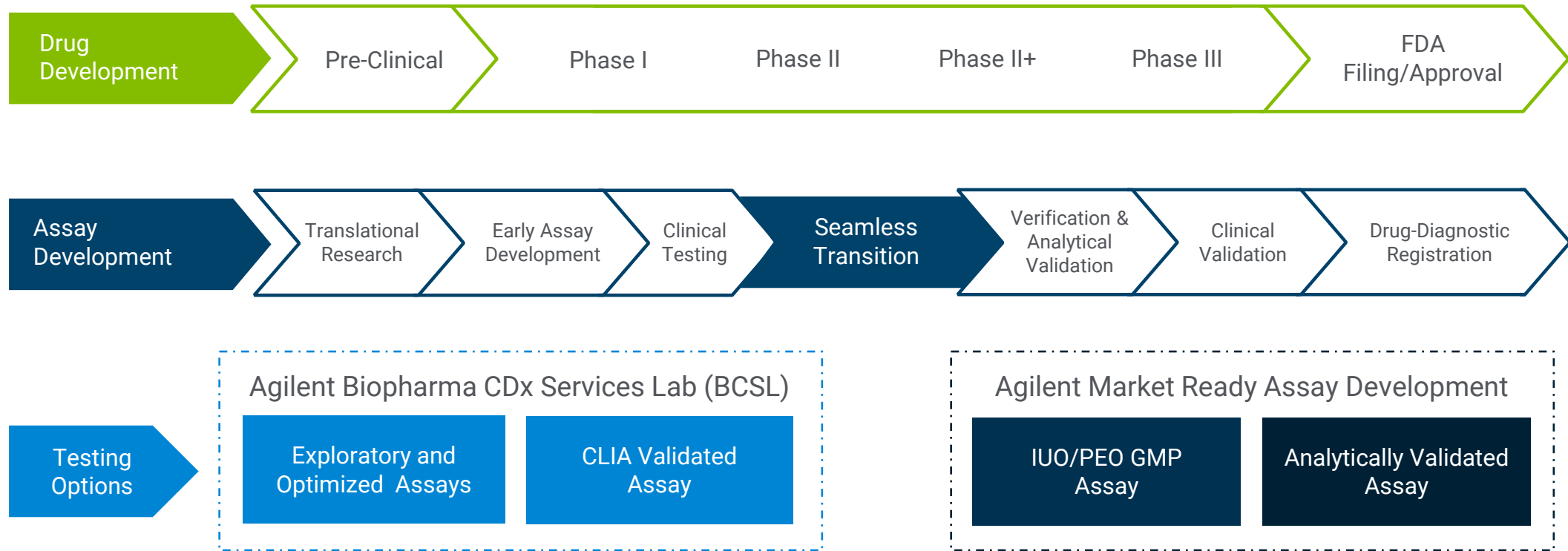


Building CDx programs to lead diagnostic approaches

- Building digital pathology capabilities for research and clinical applications
- Exploratory research with flow cytometry, mass spectrometry and ELISA assays

Biopharma CDx Services Lab Workflow

Seamless continuation for downstream CDx development: Integrated assay development and clinical testing all in one place



Agilent's Biopharma CDx Services Lab Overview



People

- Dedicated staff with expertise in CLIA/CAP laboratory environment
- 10+ Pathologist network
- Staff with ASCP certifications and California State licensure for clinical testing

Facility

- Fully equipped with redundancy for automated and manual IHC and IQFISH
- Seamless transition from development to clinical testing
- Ample storage for blocks & slides with ability to expand into adjacent space
- End to end sample data management with customizable reporting

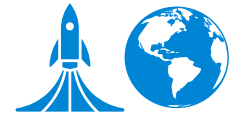
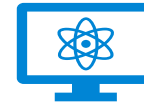
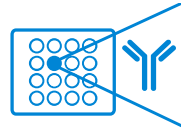
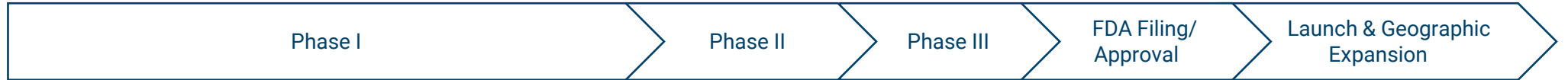
Quality

- CLIA Certified & licensed in California
- CAP Accreditation in process
- NYSDOH laboratory license in process
- Laboratory Director: Board Certified Anatomic Pathologist, MD, NY CoQ
- Dedicated Quality Compliance Director
- Supports 21 CFR Part 11 compliance (electronics and records), GDP & GCLP trained
- Participating in CAP proficiency testing

Current capacity is sufficient to accommodate the volume of testing projected for the initial introduction of these testing services. BCSL can accommodate 175 tests per week on standard work shifts with the ability to increase to double shifts during times of increased demand.

Agilent's Comprehensive CDx Platform

Clinical Trial Phases



PHARMA NEEDS

Biomarker Feasibility

Exploratory Endpoint Testing

Early Clinical Trial Assay

Drug Clinical Development, Approval and Launch Across Multiple Geographies

AGILENT ASSAY DEVELOPMENT OFFERINGS

Exploratory Assay Retrospective Testing in Biopharma CDx Service Lab (BCSL)

CLIA Validated Assay Prospective Testing in BCSL

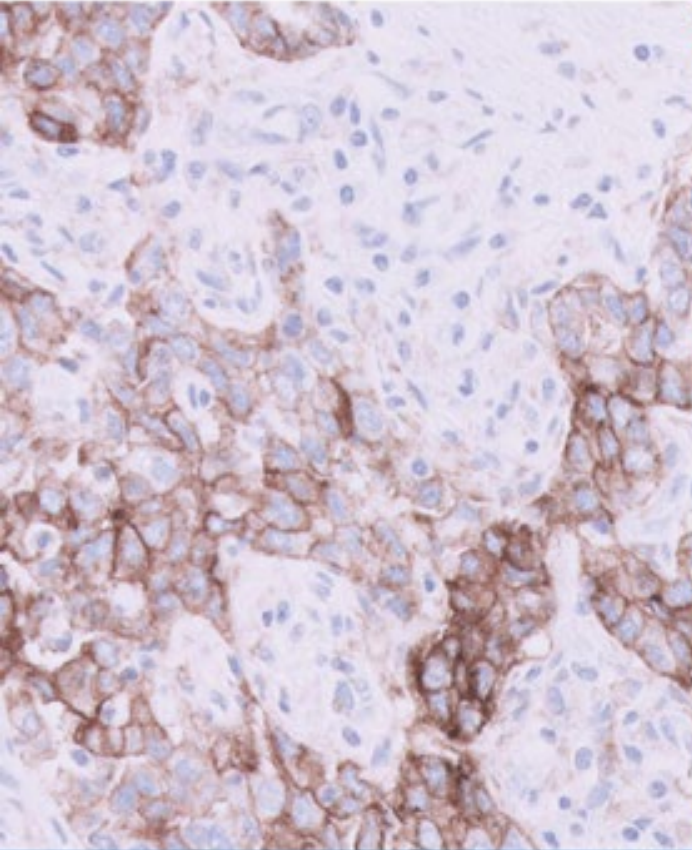
CDx Development & Commercialization Including Regulatory, Reimbursement & Launch

Digital – Whole Slide Imaging

Antibody Menu

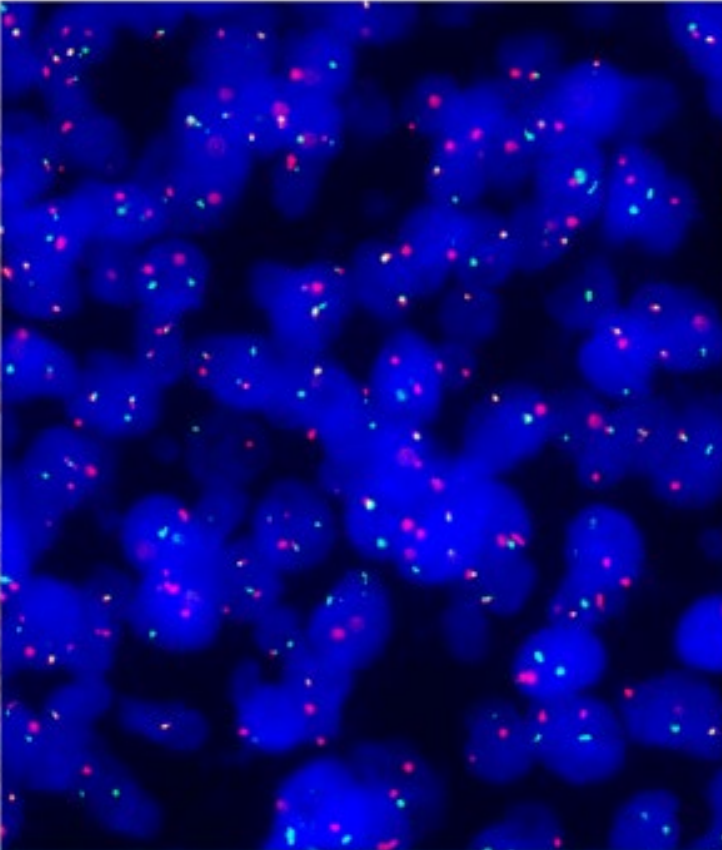
Multimodal Expertise to Advance Precision Medicine

IHC*



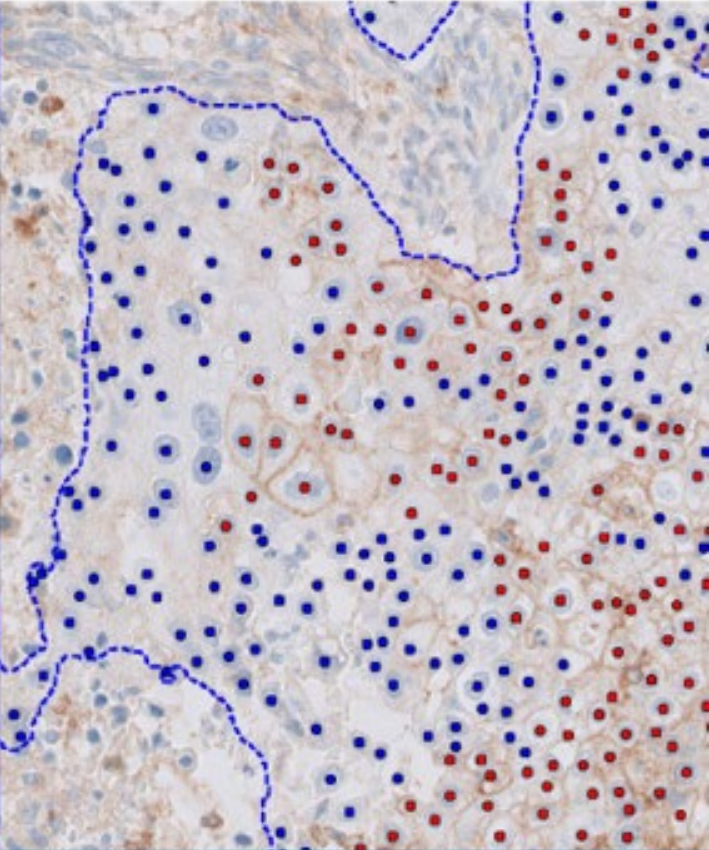
PD-L1 IHC 22C3 pharmDx

FISH*



HER2 IQFISH pharmDx

Digital Pathology**

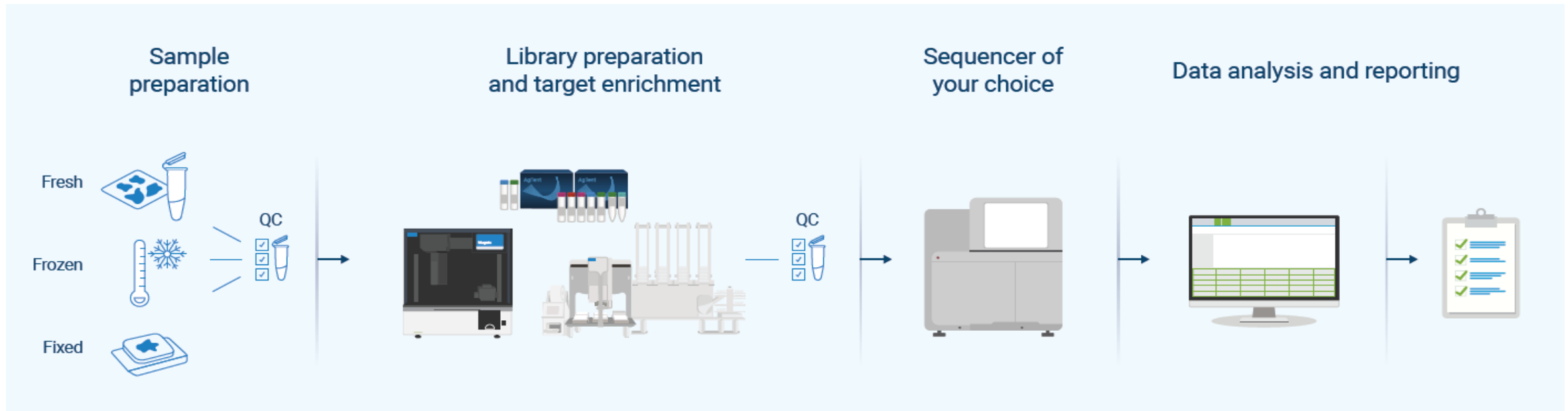


IHC with image analysis algorithm

* For In Vitro Diagnostic Use **For Research Use Only. Not for use in diagnostic procedures.

NGS Workflows for Cancer Samples Profiling

Agilent's flexibility, high quality reagent and automation solutions have a broad utility to address a vast number of customer application needs. We partner with sequencing & software providers, as well as customers to address unmet needs and to provide full workflow solutions, particularly when navigating through the oncology research settings.



Foundational technologies

- Pre-curated content in catalog or custom panels for target enrichment
- Sample and library QC for robust sample quality assessment
- Walkaway and scalable automation platforms for high-quality NGS libraries

NGS systems

Compatibility with short-read and long-read sequencing platforms

Data Reporting

Open integration with trusted bioinformatics and reporting partners

Agilent offers Complete Solution for High Resolution CGH

Catalog & Custom Arrays



Multiple array design available:

Streamlined analysis
Optimized cost & throughput
Focused CN and LOH call

Cytogenetics Reagents



Labeling kit with optimized protocols for:

Blood, Saliva, tissues
FFPE
Low Input

Liquid Handling & Scanning



Compact laboratory set up:

SureScan Scanner
Hyb Oven
Automated labelling and washing solution available

Data Analysis



Complete analysis solution:

Streamlined protocol from image to aberration calling
Built in QC
Interpretation third-party software with NGS data integration

Precision Medicine, Powered by Partnership

We are committed to meeting our partner's needs, through open collaboration, tailored services, and a shared mission to improve the lives of patients.



13 Years of Diagnostic Collaboration — Shaping the Future of Precision Medicine

John B. Wojcik, MD, PhD
Associate Vice President, Head Translational Biomarkers
Translational Medicine | Merck Research Laboratories

Merck and Agilent: 13 years of successful collaboration on PD-L1

Keytruda and 22c3 pharmDx

7 tumor types*
13 indications*
90+ countries

*Based on US approvals

KEYTRUDA
(pembrolizumab) (Merck 100 mg)

Indications: HNSCC, Breast (TNBC), Esophageal, Gastric, NSCLC, Cervical & Ovarian

2015
First PD-L1 CDx Approval (NSCLC)

2019
HNSCC CPS ≥ 1 approval

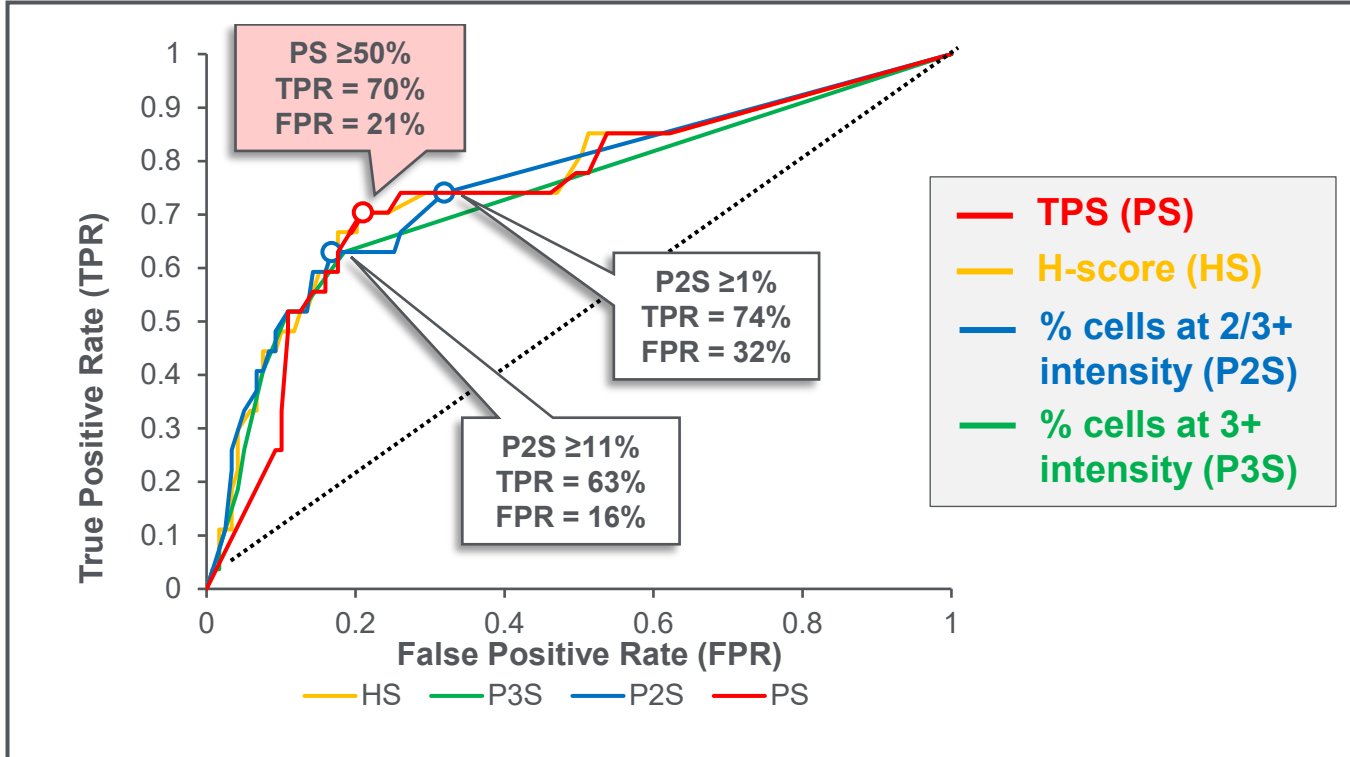
2025
Next-gen online training

2024
First Omnis platform approval

2017
First CPS approval/online training

2013
Merck-Agilent PD-L1 CDx collaboration agreement

Building the foundations for a successful diagnostic



Leveraging a large ph1 clinical dataset in NSCLC
(N=129)

Analyzing scoring approaches
TPS vs signal intensity methods

Confirming performance in a large validation set
(N=204)

- **TPS 50%** selected as cutoff

Table 2. Summary Results of the 4 Scoring Methods Used for the KEYNOTE-001 Training Set: The 4 Methods Performed Similarly

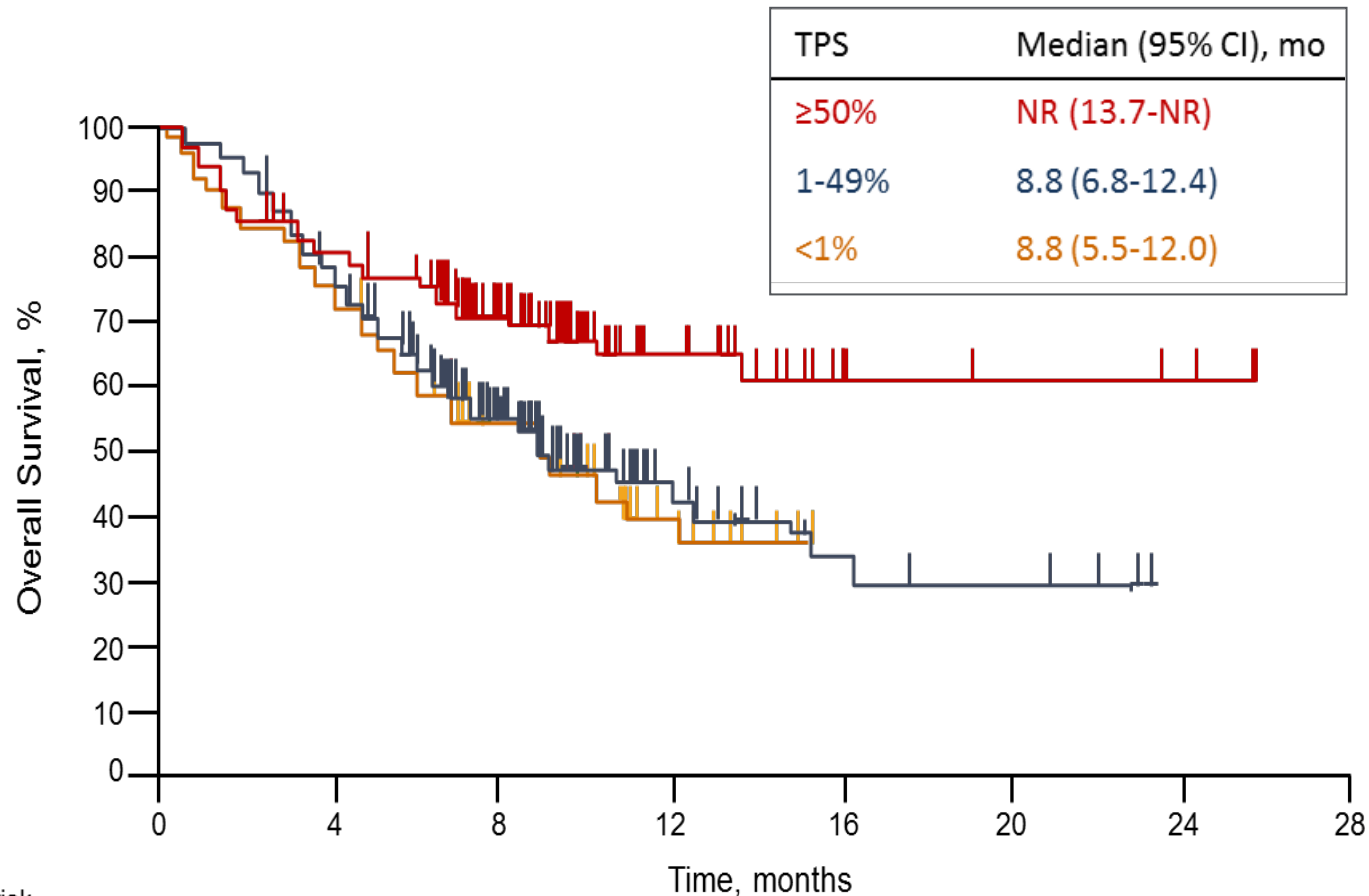
Scoring Method	Area Under the ROC Curve	Youden Index	Cutoff Score ^a	False-Positive Rate	True-Positive Rate
PS1 TPS	0.743	0.494	50	0.210	0.704
PS2 % cells 2/3+	0.758	0.462	11	0.168	0.630
PS3 % cells 3+	0.736	0.445	1	0.185	0.630
HS H-score	0.758	0.502	63	0.202	0.704

Garon et al. (2015) NEJM;
Dolled-Filhart et al. (2016) Arch Pathol Lab Med

Abbreviations: HS, histology or H-score; PD-L1, programmed death ligand-1; PS, proportion score; ROC, receiver operating characteristic.

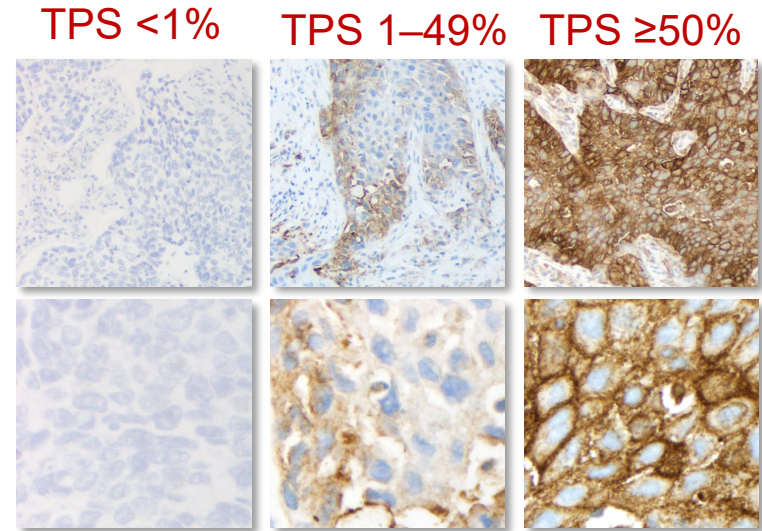
^a Percentage of tumor cells staining for PD-L1 based on the specific scoring method.

Establishing significant clinical benefit with PD-L1 biomarker



n at risk.

	0	4	8	12	16	20	24	28
TPS ≥50%	119	92	56	22	5	4	3	0
TPS 1-49%	161	119	58	15	6	4	0	0
TPS <1%	76	55	33	8	0	0	0	0



➤ 1st pembrolizumab NSCLC (2L) FDA approval utilized PD-L1 cutoff of TPS50 (AA)--NSCLC cutoff later replaced with TPS1

Garon et al. (2015) NEJM

Merck and Agilent: 13 years of successful collaboration on PD-L1

Keytruda and 22c3 pharmDx

7 tumor types*
13 indications*
90+ countries

*Based on US approvals

KEYTRUDA
(pembrolizumab) (Merck KGaA)

The infographic features a central human silhouette with green dots indicating tumor locations. Surrounding the silhouette are seven circular icons with corresponding labels: HNSCC (head/neck), Breast (TNBC), Esophageal, Gastric, NSCLC (lungs), and Cervical & Ovarian. The Keytruda logo and name are positioned below the silhouette.

2015
First PD-L1 CDx
Approval (NSCLC)

2019
HNSCC CPS ≥ 1
approval

2025
Next-gen online
training

2024
First Omnis
platform approval

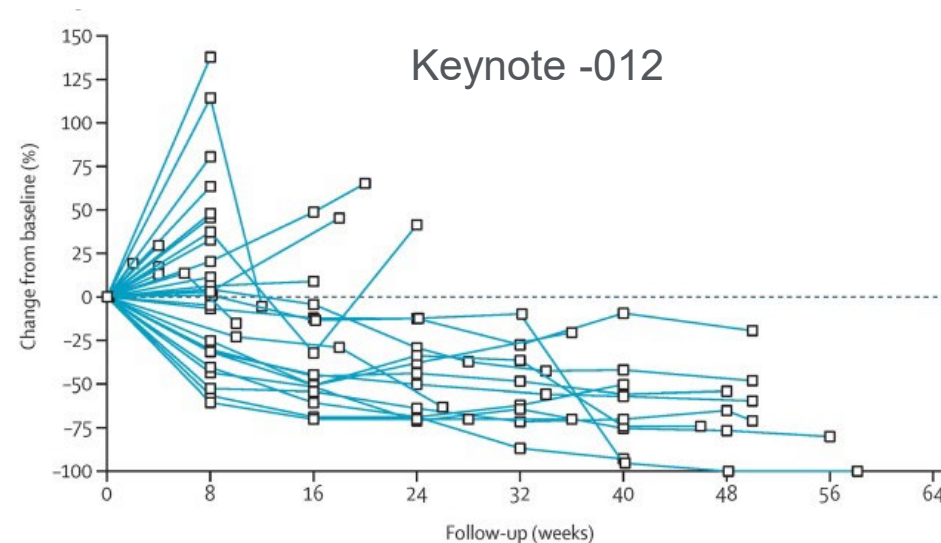
2017
First CPS approval/
online training

2013
Merck-Agilent PD-L1 CDx
collaboration agreement

Matching strategy to tumor biology

- TPS “PDL1 positive” rates are low in key indications with unmet need and potential to respond to PD-1 axis therapy
- Merck data from a prototype assay had scores including immune cells
- Clinical studies (KEYNOTE-012 and -028), showed meaningful response rates
- It was also possible to study the relative contribution of tumor versus immune cell PDL1 expression to predictive value

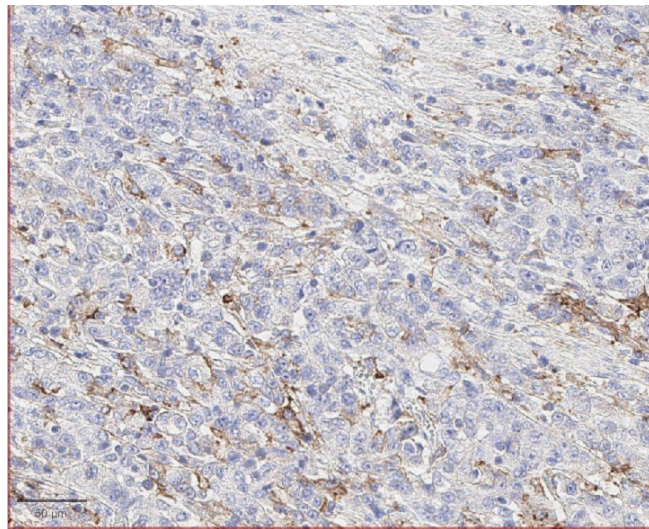
Gastric/GEJ Response data from early KEYNOTE studies				
	Response	No Response	ORR	Odds ratio
CPS \geq 1	24	124	16.2%	2.8
CPS < 1	7	102	6.4%	
TPS \geq 1%	5	27	15.6%	1.4
TPS < 1%	26	199	11.6%	



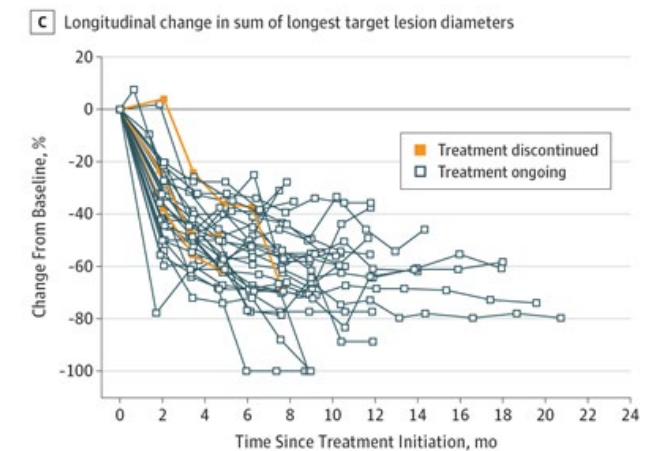
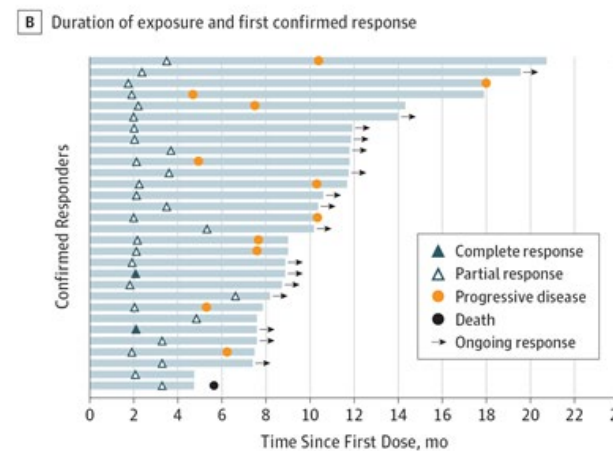
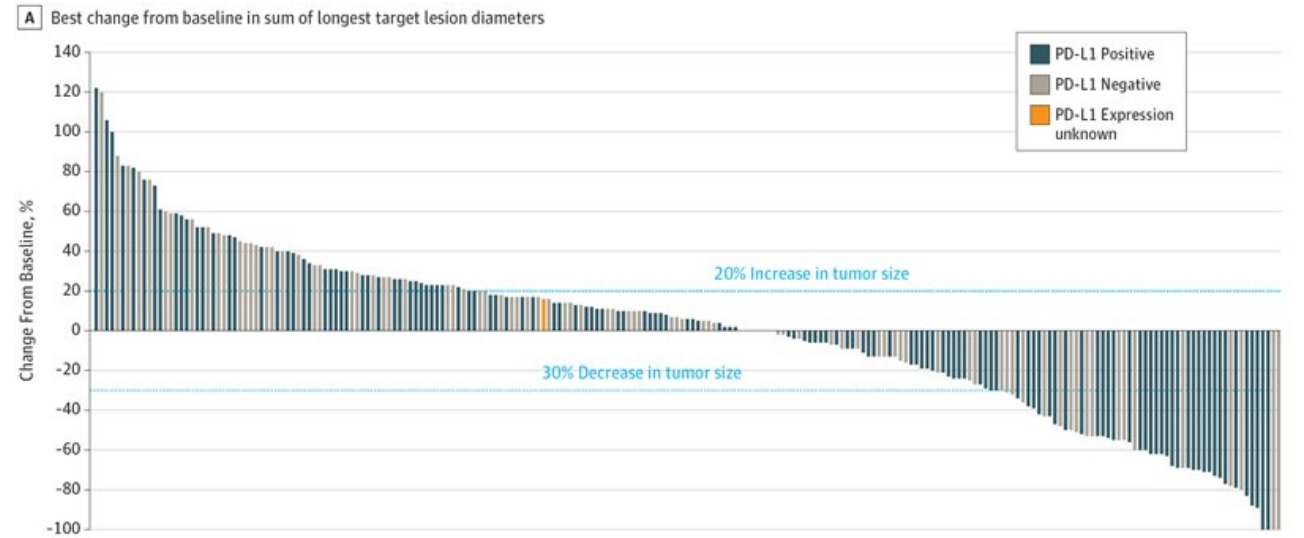
Muro K, Chung H, Shankaran V et al. The Lancet Oncology, 2016; 17, 717-726

Application of CPS scoring in Keynote -059

$$\text{CPS} = \frac{\text{\# PD-L1 staining cells (tumor cells, lymphocytes, macrophages)}}{\text{Total \# of viable tumor cells}} \times 100$$



➤ FDA grants accelerated approval in recurrent locally advanced or metastatic Gastric/GEJ with PD-L1 cutoff of CPS ≥ 1



Fuchs CS, Doi T, Jang RW, et al. *JAMA Oncol.* 2018;4(5):e180013. doi:10.1001/jamaoncol.2018.0013

Merck and Agilent: 13 years of successful collaboration on PD-L1

Keytruda and 22c3 pharmDx

7 tumor types*
13 indications*
90+ countries

KEYTRUDA
(pembrolizumab) (Merck 100mg)

*Based on US approvals

2015
First PD-L1 CDx Approval (NSCLC)

2019
HNSCC CPS ≥ 1 approval

2025
Next-gen online training

2024
First Omnis platform approval

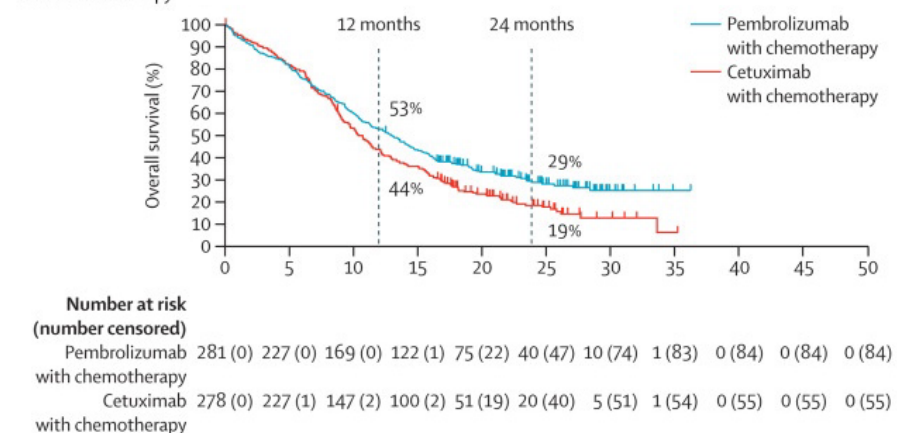
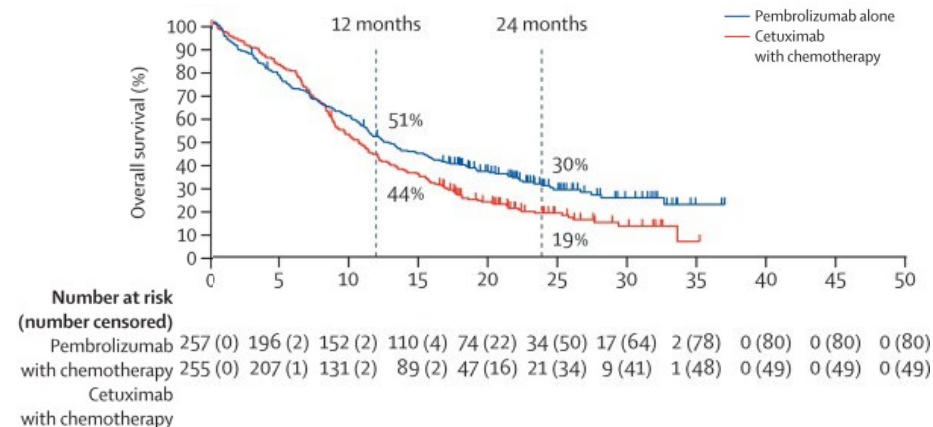
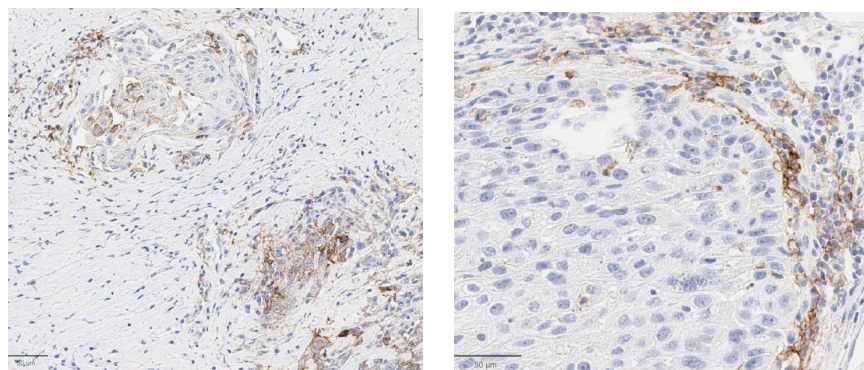
2017
First CPS approval/online training

2013
Merck-Agilent PD-L1 CDx collaboration agreement

Adapting to emerging data

Keynote -048, Squamous Cell Carcinoma of the Head and Neck

- Enrolled PD-L1 all comers; stratified by TPS50
- Based on KN012 & KN055, during study amended primary analyses to CPS20, CPS1 & ITT
- FDA approvals:
 - Monotherapy-->CPS1
 - In combination with chemotherapy--> all comers



Burtness B, Harrington K, Greil R et al. The Lancet, 2019; 394, 1915-1928

Similar adaptability evident in KN-045 and KN-355, where primary analysis population(s), distinct from stratified populations, were modified during the study in response to emerging data

Looking beyond the horizon

Keytruda and 22c3 pharmDx

7 tumor types*
13 indications*
90+ countries

*Based on US approvals

2015
First PD-L1 CDx
Approval (NSCLC)

2019
HNSCC CPS ≥ 1
approval

2025
Next-gen online
training

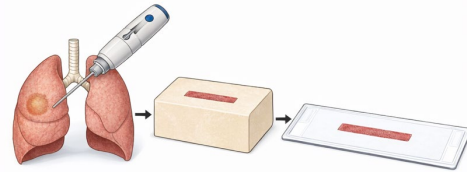
2024
First Omnis
platform approval

2017
First CPS approval/
online training

2013
Merck-Agilent PD-L1 CDx
collaboration agreement

Challenges and opportunities ahead

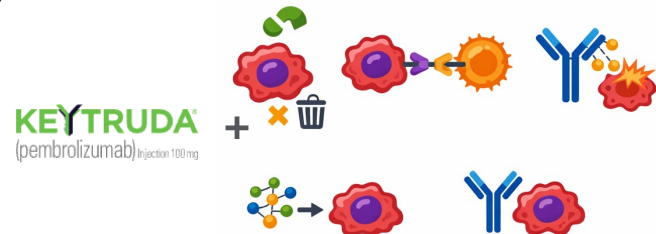
Diversified treatment and biomarker landscape



EGFR, ALK, ROS1, BRAF, MET, RET, HER2, NTRK, KRAS and PD-L1*

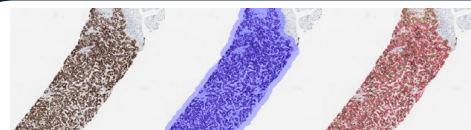
How can we optimize testing efficiency?
How do we ensure access and tissue availability?

New therapeutic modalities and combinations

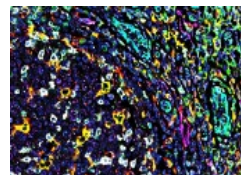


How do biomarkers differ by therapeutic modality?
How do biomarker/response associations change with combinations?

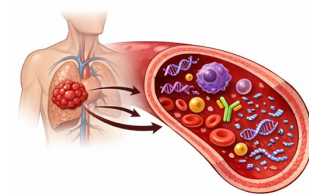
Emerging technologies



Digital Pathology



Multiplex approaches



Circulating biomarkers

How do we use these tools to refine approaches and maximize clinical benefit?
How do we deploy, at scale, in urgent clinical decision-making settings?



Summary & Closing

Precision · Partnership · Purpose

Mark M. Garner, PhD
Director, Translational and Clinical Research Market
April 19, 2026



Powered by Partnership

Partnership isn't what we do, it's *who we are*

We are committed to meeting our customers' needs through open collaboration, tailored products and services, and a **shared mission to advance the quality of life.**



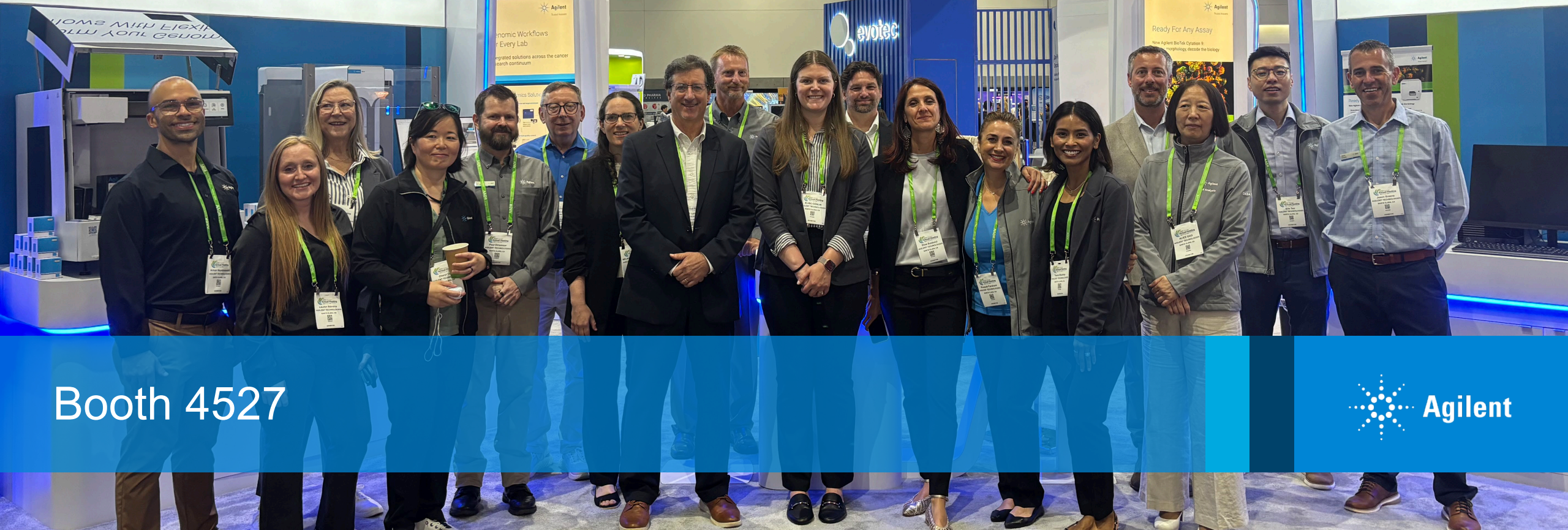
forward

Transform Your Genomics
Workflows With Flexible Automation



Every Day Counts
in the Race Against Cancer

Ready For Any Assay:
Bring Every Detail into S
BioTek Cytation 9 Cell Imaging Multimod



Booth 4527



United with our partners for a single purpose

Every day Agilent strives to bring forward the moment when cancer can be overcome by providing the solutions and tools scientific and medical professionals need to take time back from cancer and give it to the people who need it most of all.





Agilent

Trusted Answers