

Agilent J&W DB-Sulfur SCD

Column installation instructions



Important: Read this first

Thank you for selecting Agilent J&W DB-Sulfur SCD column

To obtain the optimum performance of this DB-Sulfur SCD column with your Sulfur Chemiluminescence Detector, you must follow these special installation instructions in addition to the steps provided in the **Agilent J&W Capillary GC Column Installation Guide** included with the column. Familiarize yourself with the instructions in the **GC Column Installation Guide** and these special instructions before beginning your column installation.

1. With the column oriented so that you can read the serial number on the ID tag (see Figure 1A), unwind approximately $\frac{1}{2}$ coil of tubing from the end of the back of the column nearest to the cage ring (see Figure 1B for proper column orientation). There should be enough column tubing to easily extend the end of the column to the GC injection port.
2. Position and hang the column cage ring onto the GC oven column hanger, as demonstrated in Figure 1A.
3. Place a column/injection port nut, then the appropriate size ferrule onto the left end of the tubing.
4. Refer to the **GC Column Installation Guide**, steps 1 to 4, and install your DB-Sulfur SCD column into the sample inlet for your GC system.

Important: Do not install the column in the detector at this time.

5. After establishing that the column is installed leak-free on the inlet side, and that the carrier gas flow is set, precondition the column by setting the GC oven temperature to 10 degrees above the final temperature of your GC analysis or to the column's programmed maximum temperature limit, whichever is lower.

Note: Temperature limits for your DB-Sulfur SCD are given on the column's ID tag.

6. Once the GC oven has reached the temperature set point, precondition the column for 30 minutes, then cool the GC oven to room temperature.
7. You can now continue with installation of your column into the SCD.

See reverse side for more information.

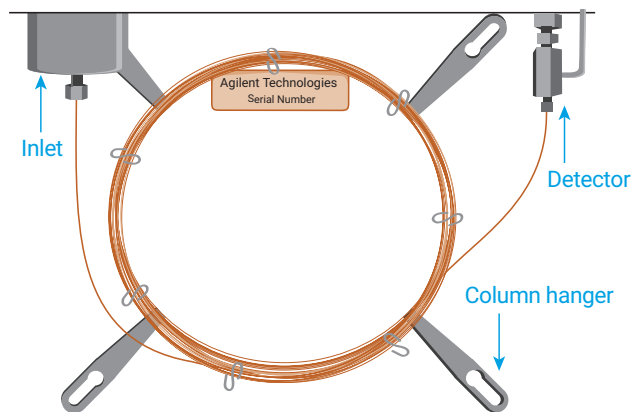


Figure 1A. Agilent DB-Sulfur SCD installed correctly, with the ID tag facing where the serial number can be read.

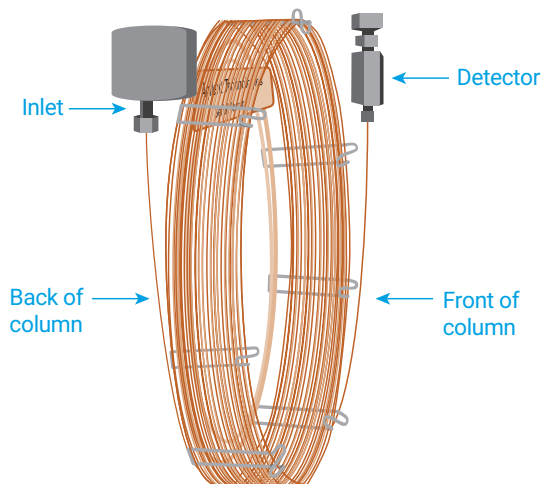


Figure 1B. Correct installation for an Agilent J&W DB-Sulfur SCD, showing the column tubing from the back of the column installed in the inlet (on left) and the front of the column installed into the SCD adaptor fitting (on right).

For Technical Support:
agilent.com/chem/techsupport

Learn more:
www.agilent.com/chem

Buy online:
www.agilent.com/chem/store

Find an Agilent Representative or
Agilent Authorized Distributor:
www.agilent.com/chem/contactus

U.S. and Canada
1-800-227-9770
agilent_inquiries@agilent.com

Europe
info_agilent@agilent.com

Asia Pacific
inquiry_lsca@agilent.com

India
india_lsca_marketing@agilent.com

www.agilent.com/chem

This information is subject to change without notice.