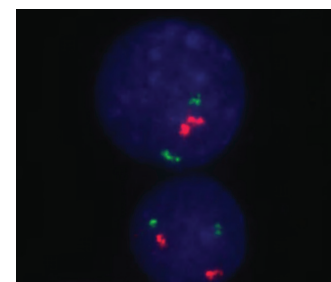
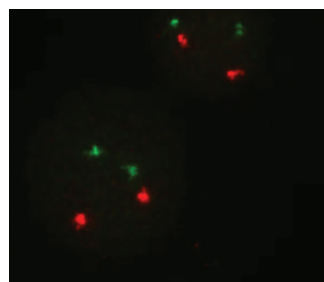


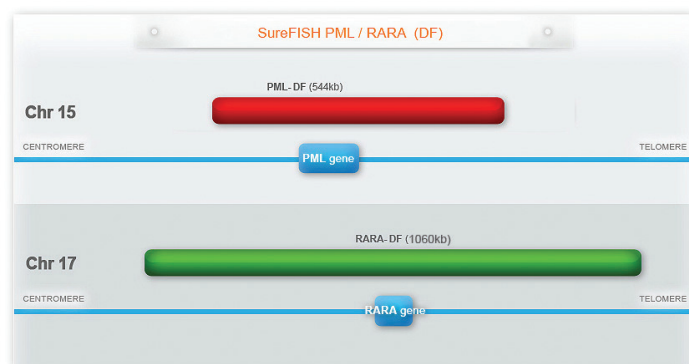


Agilent's PML-RARA probe:  
bright signals with less background



## Agilent PML-RARA probe maps

Agilent PML-RARA probes follow standard dual-fusion designs. The length of each child probe is optimized to give bright, balanced signal with low background.



## Comparison to competitor probes

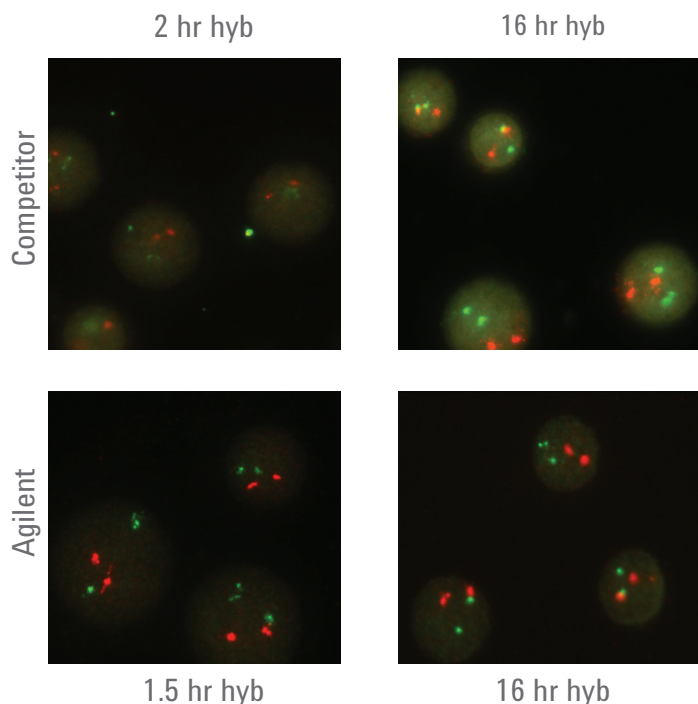
Competitor probes were hybridized using competitor reagents. Agilent PML-RARA probes were hybridized with IQFISH Fast Hybridization Buffer.

### SureFISH Ordering Information

Part Number	Product Description	Volume
G101605	SureFISH PML RARA DF	20 µl

### Ancillary Reagents

Part Number	Product Description
G9415A	IQFISH Fast Hybridization Buffer, 20 reactions





Agilent Pathology Solutions

**www.dako.com**  
Represented in more  
than 100 countries

**Australia**  
+61 2 9922 0700  
**Austria**  
+43 1 408 43 34 0  
**Belgium**  
+32 16/93 00 30  
**Brazil**  
+55 11 50708300

**Canada**  
+1 800 387 8257  
**China**  
+86 21 3612 7091  
**Denmark**  
+45 44 85 97 56  
**Finland**  
+358 9 348 73 950

**France**  
+33 1 64 53 61 44  
**Germany**  
+49 40 69 69 470  
**Ireland**  
+353 1 479 0568  
**Italy**  
+39 02 58 078 1

**Japan**  
+81 3 5232 9970  
**Korea**  
+82 2 2194 9577  
**The Netherlands**  
+31 20 42 11 100  
**Norway**  
+47 23 14 05 40

**Poland**  
+48 58 661 1879  
**Spain**  
+34 93 344 57 77  
**Sweden**  
+46 8 556 20 600  
**Switzerland**  
+41 41 760 11 66

**United Kingdom**  
+44 (0)1 353 66 99 11  
**United States of America**  
+1 805 566 6655



**LEARN MORE OR BUY ONLINE:**  
[www.agilent.com/genomics/surefish](http://www.agilent.com/genomics/surefish)

Analyte Specific Reagents. Analytical and performance characteristics are not established.

PR7000-0293  
© Agilent Technologies, Inc. 2016  
Printed in USA, October 20, 2016  
5991-4711EN